

MAIPU
MAKE IT INTELLIGENT

MAIPU

2023 MAIPU ROUTER PRODUCT LINE

Maipu Communication Technology Co., Ltd.

迈普大厦



MAIPU, MAKE IT INTELLIGENT



AGENDA

C O N T E N T S

CHAPTER 1	MAIPU MP SERIES ENTERPRISE ROUTER
CHAPTER 2	MAIPU NSR SERIES ENTERPRISE ROUTER
CHAPTER 3	MAIPU ROUTER SOFTWARE FEATURES
CHAPTER 4	MAIPU ROUTER TYPICAL APPLICATIONS



MP SERIES ENTERPRISE ROUTER PRODUCT FAMILY

MP7500X series

- Core Router for Enterprise HQ
- Redundant Control Engines
- Redundant Switching Fabrics
- Static/RIP/OSPF/BGP Routing
- MPLS/IPSec/GRE/L2TP VPN
- SDH/Ethernet Line Cards



MP7500X-10

- Dual Control Engines
- Dual Switch Fabrics
- 10 Service Slots
- Distribution architecture
- Four Power Slots



MP7500X-04

- Dual Control Engines
- Dual Switch Fabrics
- 4 Service Slots
- Distribution architecture
- Four Power Slots

MP7300X series

- Aggregation Router for Enterprise Branch
- Redundant Control Engines
- Static/RIP/OSPF/BGP Routing
- MPLS/IPSec/GRE/L2TP VPN
- SDH/Ethernet Line Cards

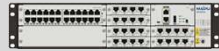


MP7300X-08

- Dual Control Engines
- 8 Service Slots
- Two Power Slots

MP3900X series

- Aggregation Router for Enterprise Branch
- Static/RIP/OSPF/BGP Routing
- MPLS/IPSec/GRE/L2TP VPN
- SDH/Ethernet Line Cards



MP3900X-08

- One SPU Slot, Up to 4*10G SFP+
- 6*RM2B expansion slots
- 2*RM3E expansion slots
- Two Power Slots



MP3900X-06

- 8-Port 1G Combo WAN
- 6*RM2B expansion slots
- Fixed Dual AC

MP2900X series

- Access Router for enterprise Large Office
- Static/RIP/OSPF/BGP Routing
- MPLS/IPSec/GRE/L2TP VPN
- SDH/Ethernet/4G/5G Line Cards



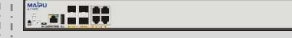
MP2900X-24D

- 2-Port 1G Combo WAN
- 2-Port 1G Base-T WAN
- 48-Port 1G Base-T LAN
- 4*RM2B expansion slots



MP2900X-14D

- 4-Port 1G Combo WAN
- 24-Port 1G Base-T LAN
- 4*RM2B expansion slots



MP2900X-04D

- 4-Port 1G Combo WAN
- 4*RM2B expansion slots

MP1900X series

- Access Router for enterprise Medium Office
- Static/RIP/OSPF/BGP Routing
- MPLS/IPSec/GRE/L2TP VPN
- SDH/Ethernet/4G/5G Line Cards



MP1900X-22

- 1-Port 1G Base-X WAN
- 4-Port 1G Base-T WAN
- 8-Port 1G Base-T LAN
- 2*RM2B expansion slots



MP1900X-12

- 1-Port 1G Base-X WAN
- 8-Port 1G Base-T LAN
- 2*RM2B expansion slots

MP1800X series

- Access Router for enterprise Small Office
- Static/RIP/OSPF/BGP Routing
- MPLS/IPSec/GRE/L2TP VPN
- Inbuilt 4G Modem



MP1800X-40E

- 5-Port 1G Base-T
- Dual 4G Modem
- Dual SIM Slots



MP1800X-40W

- 5-Port 1G Base-T
- Single 4G Modem
- Dual SIM Slots
- 2.4G Wi-Fi



MP1800X-40

- 5-Port 1G Base-T
- Single 4G Modem
- Dual SIM Slots



MP1800X-50

- 5-Port 1G Base-T



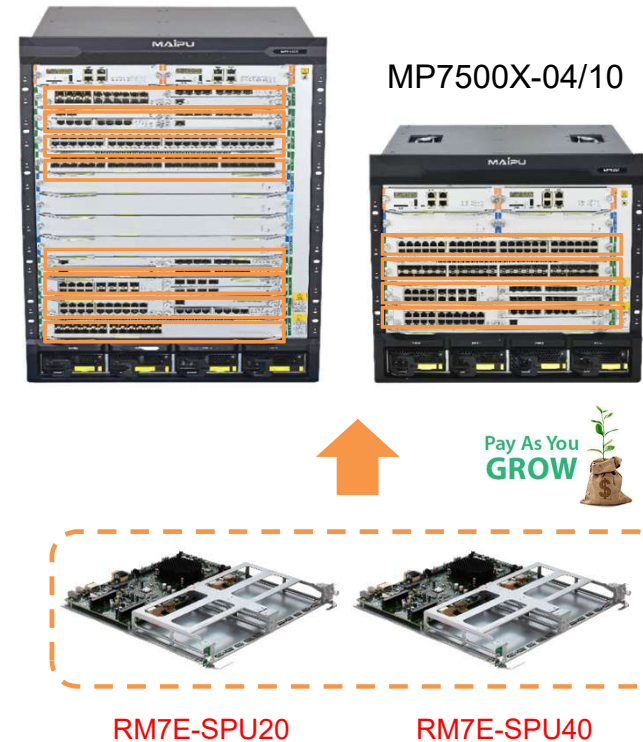
MP1800X-51

- 5-Port 1G Base-T
- 1-Port 1G Combo



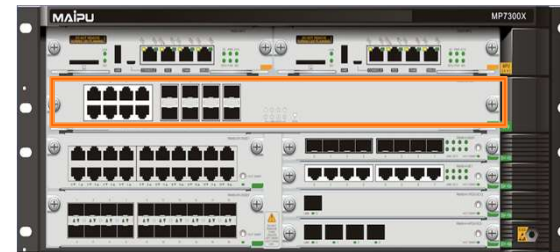
MP7500X SERIES ENTERPRISE CORE ROUTER

Specification	MP7500X-10	MP7500X-04
WAN Throughput (Mpps)	10*25Mpps (SPU20) 10*50Mpps (SPU40)	4*25Mpps (SPU20) 4*50Mpps (SPU40)
SPU Performance (Mpps)	SPU20: 25Mpps SPU40: 50Mpps	SPU20: 25Mpps SPU40: 50Mpps
Hardware Architecture	Distribution	Distribution
Switching Fabric Slots (SFU)	2	2
Control Engine Slots (MPU)	2	2
Line Card Unit (LPU)	10	4
Power Module Slots	4	4
Fan Array Slot	2	1
SD Extension Card	1	1
Memory (Default)	8GB	4GB
Flash (Default)	8GB	8GB
USB 2.0	1	1
Dimensions (W*D*H)	444*480*755mm (17U)	444*480*444mm (10U)

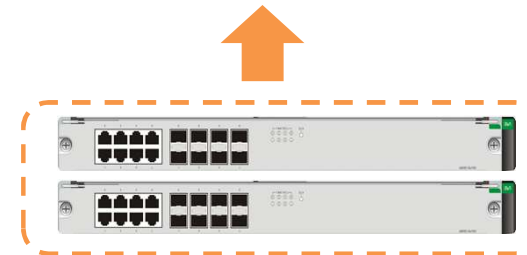


MP7300X-08 ENTERPRISE AGGREGATION ROUTER

Specification	MP7300X-08 Series
WAN Throughput (Mpps)	SPU20:25Mpps SPU40:50Mpps
Service Process Unit (SPU)	1
Control Engine Slots (MPU)	2
Line Card Slots (LPU)	8
SPU Fixed WAN Ports	8*GET+8*GEF
Power Module Slots	2
Fan Array Slots	1
SD Extension Slots	1
Memory (Default)	4 GB
Flash (Default)	8 GB
USB 2.0	1
Dimensions (W*D*H)	440mm*436mm*222mm (5U)



MP7300X-08



RM3D-SPU20

RM3D-SPU40



MP3900X SERIES ENTERPRISE AGGREGATION ROUTER

Specification	MP3900X-08	MP3900X-06
WAN Throughput (Mpps)	SPU05:8Mpps SPU10:15Mpps SPU40:45Mpps	5Mpps
Service Process Unit (SPU)	1	N/A
Line Card Slots (LPU)	6+2	6
SPU Fixed WAN Ports	//SPU05: 16*GET+8*GEF //SPU10: 16*GET+8*GEF+2*10GEF //SPU40: 4*GET+4*GEF+4*GECCombo+4*10GEF	8*GE Combo
Power Module Slots	2 Power Slots	2*Fixed AC
Fan Array Slots	1	Inbuilt
Memory (Default)	2 GB	2 GB
Flash (Default)	8 GB	8GB
USB 2.0	1	1
Dimensions (W*D*H)	2U	1U

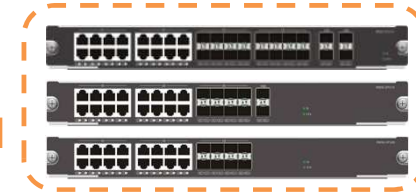


MP3900X-08



MP3900X-06

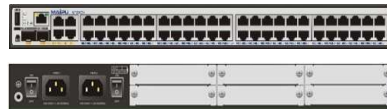
RM3E-SPU05/10/40



Pay As You
GROW

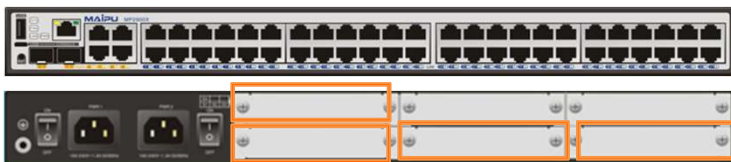


MP2900X SERIES ENTERPRISE ACCESS ROUTER



Specification	MP2900X-24D	MP2900X-14D	MP2900X-04D
WAN Throughput (Mpps)	≥1Mpps	≥1Mpps	≥1Mpps
Line Card Slots	4	4	4
Inbuilt WAN Ports	4*GET+2*GEF(combo)	4*GE Combo	4*GE Combo
Inbuilt LAN Ports	48*GET	24*GET	N/A
Power Supply	2*AC	2*AC	2*AC
Fan Enable	Fixed FAN	Fixed FAN	Fixed FAN
Memory (Default)	1GB	1GB	1GB
Flash (Default)	8GB	8GB	8GB
USB 2.0	1	1	1
Dimensions (W*D*H)	442mm*380mm*44.3mm	442mm*380mm*44.3mm	442mm*380mm*44.3mm

MP2900X Series



RM2B Module:
V.35/E1/CE1/OC3/Ethernet/4G/5G
Single/Dual Fixed Power

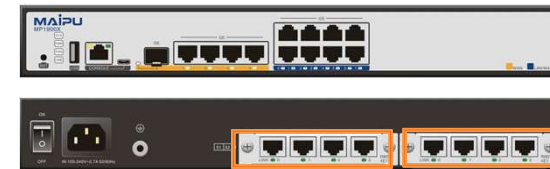


MP1900X SERIES ENTERPRISE ACCESS ROUTER



Specification	MP1900X-22	MP1900X-12
WAN Throughput (Kpps)	≥800Kpps	≥500Kpps
Line Card Slots	2	2
Inbuilt WAN Ports	1*GEF+4GET	1*GEF
Inbuilt LAN Ports	8*GET	8*GET
Power Supply	1*AC	1*AC
Fan Enable	Fixed Fan	Fixed Fan
Memory (Default)	1GB	512MB
Flash (Default)	128 MB	128 MB
USB 2.0	1	1
Dimensions (W*D*H)	340mm*260mm*44.2mm	340mm*260mm*44.2mm

MP2900X Series



RM2B Module:
V.35/E1/CE1/OC3/Ethernet/4G/5G
Single Fixed Power



MP1800X SERIES ENTERPRISE EDGE ROUTER



Specification	MP1800X-50	MP1800X-51	MP1800X-40E	MP1800X-40W	MP1800X-40
WAN Throughput (Kpps)	≥250Kpps	≥250Kpps	≥250Kpps	≥250Kpps	≥250Kpps
Default WAN Ports	1*GET	1*GE Combo	1*GET	1*GET	1*GET
Default LAN Ports	4*GET	5*GET	4*GET	4*GET	4*GET
Inbuilt Wi-Fi	N/A	N/A	N/A	802.11n (2.4GHZ)	N/A
Inbuilt 4G LTE Module	N/A	N/A	Dual 4G	Single 4G	Single 4G
SIM Slots	N/A	N/A	Dual SIM Slots	Dual SIM Slots	Dual SIM Slots
4G Antenna	N/A	N/A	External	External	External
Power Supply	1*AC	1*AC	1*DC(12V)	1*DC(12V)	1*DC(12V)
Fan Enable	Fixed Fan	Fixed Fan	Fan less	Fan less	Fan less
Memory (Default)	1GB	512MB	512 MB	512 MB	512 MB
Flash (Default)	128 MB	128 MB	128 MB	128 MB	128 MB
USB 2.0	1	1	1	1	1
Working Temperature	0~45°C	0~45°C	-20~60°C	-20~60°C	-20~60°C
Dimensions (W*D*H)	260mm*190mm*44mm	260mm*190mm*44mm	145mm*100mm*38mm	145mm*100mm*38mm	145mm*100mm*38mm



AGENDA

C O N T E N T S

CHAPTER 1	MAIPU MP SERIES ENTERPRISE ROUTER
CHAPTER 2	MAIPU NSR SERIES ENTERPRISE ROUTER
CHAPTER 3	MAIPU ROUTER SOFTWARE FEATURES
CHAPTER 4	MAIPU ROUTER TYPICAL APPLICATIONS



NSR SERIES ENTERPRISE ROUTER PRODUCT FAMILY

NSR8000X Series

- Core Router for Enterprise HQ
- Redundant Control Engines
- Six Switching Fabrics
- Static/RIP/OSPF/BGP Routing
- MPLS/IPSec/GRE/L2TP VPN
- SDH/Ethernet Line Cards

2023
Q4



NSR8000X-08

- Dual Control Engines
- Six Switching Fabrics
- 8 Service Slots
- CLOS architecture
- Eight Power Slots
- Dual FAN Slots

NSR7300X Series

- Aggregation Router for Enterprise Branch
- Redundant Control Engines
- Static/RIP/OSPF/BGP Routing
- MPLS/IPSec/GRE/L2TP VPN
- SDH/Ethernet Line Cards

2023
Q3



NSR7300X-08

- Dual Control Engines
- One SPU Engine
- 8 Service Slots
- Two Power Slots

NSR3900X Series

- Aggregation Router for Enterprise Branch
- Static/RIP/OSPF/BGP Routing
- MPLS/IPSec/GRE/L2TP VPN
- SDH/Ethernet Line Cards

2023
Q2



NSR3900X-X4

- 16*10G SFP+ and 24*1G Base-T
- 4*RM2B expansion slots
- Two Power Slots

NSR2900X Series

- Access Router for enterprise Large Office
- Static/RIP/OSPF/BGP Routing
- MPLS/IPSec/GRE/L2TP VPN
- SDH/Ethernet/4G/5G Line Cards



NSR2900X-24D

- 2-Port 10G SFP+ WAN
- 4-Port 1G Base-T WAN
- 48-Port 1G Base-T LAN
- 4*RM2B expansion slots



NSR2900X-14D

- 2-Port 10G SFP+ WAN
- 4-Port 1G Base-T WAN
- 24-Port 1G Base-T LAN
- 4*RM2B expansion slots



NSR2900X-04

- 2-Port 10G SFP+ WAN
- 4-Port 1G Base-T WAN
- 4*RM2B expansion slots



NEW NSR2900X SERIES ACCESS ROUTER

2022
Q4



NSR2900X Series

Model	NSR2900X-04-AC	NSR2900X-14D-AC	NSR2900X-24D-AC
Hardware Version	D1	D1	D1
Throughput	≥3Mpps	≥3Mpps	≥3Mpps
Fixed 1/10G WAN	2*1/10G SFP+	2*1/10G SFP+	2*1/10G SFP+
Fixed 1000M WAN	4*1G Base-T	4*1G Base-T	4*1G Base-T
Fixed 1000M LAN	N/A	24	48
Expansion Slots	4	4	4
Power Supply	Fixed Dual AC	Fixed Dual AC	Fixed Dual AC



NEW NSR3900X-X4 AGGREGATION ROUTER

2023
Q2



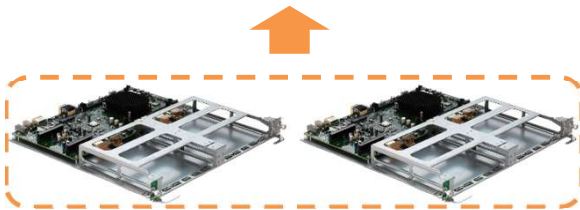
Model	NSR3900X-X4
Throughput	8-10Mpps
Fixed 1/10G WAN & LAN	16*1/10G SFP+
Fixed 1000M WAN & LAN	24*1G Base-T
Expansion Slots	4
Power Supply	Modular Dual Power Slots



NEW NSR7300X-X8 AGGREGATION ROUTER

2023
Q3

NSR7300X-X8



SPU Type-A

SPU Type-B

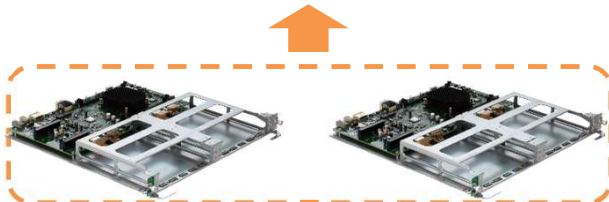
Model	NSR7300X-X8
Throughput (Mpps)	10Mpps (SPU Type-A) 40Mpps (SPU Type-B)
Control Engine Slots (MPU)	2
Service Process Unit (SPU)	1
Line Card Slots (LPU)	8
SPU Fixed WAN Ports	4*10G+8*GET
Power Module Slots	2
Fan Array Slots	1



NEW NSR8000X SERIES CORE ROUTER

2023
Q4

NSR8000X-X8



SPU Type-A

SPU Type-B

Model	NSR8000X-X8
WAN Throughput (Mpps)	10Mpps*8=80Mpps (SPU Type-A) 60Mpps*8=480Mpps (SPU Type-B)
SPU Performance (Mpps)	SPU Type-A: 10Mpps SPU Type-B: 60Mpps
Hardware Architecture	CLOS
Control Engine Slots (MPU)	2
Switching Fabric Slots (SFU)	6
Line Card Slots (LPU)	8
Power Module Slots	8
Fan Array Slot	2



AGENDA

C O N T E N T S

CHAPTER 1	MAIPU MP SERIES ENTERPRISE ROUTER
CHAPTER 2	MAIPU NSR SERIES ENTERPRISE ROUTER
CHAPTER 3	MAIPU ROUTER SOFTWARE FEATURES
CHAPTER 4	MAIPU ROUTER TYPICAL APPLICATIONS



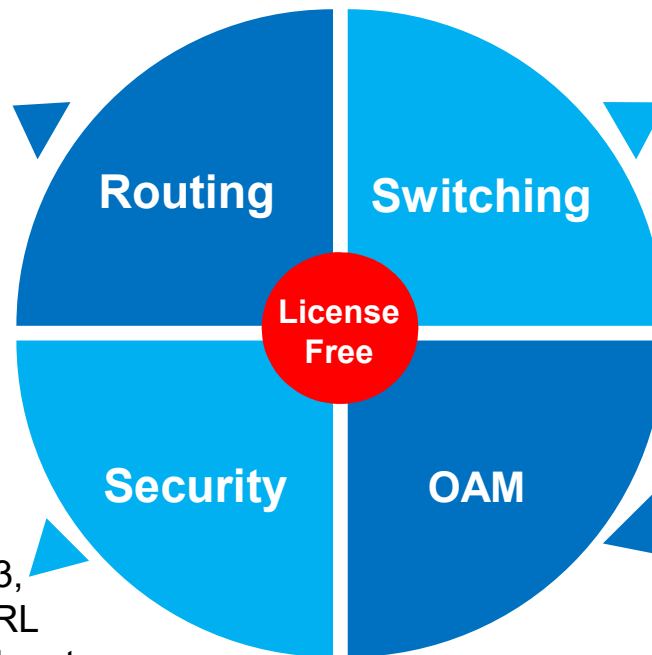
INTEGRATED ROUTER IOS WITHOUT LICENSE FEE

Routing Protocol

Static Route/Static Routev6, RIP/RIPng, OSPFv2/OSPFv3, BGP/BGP4+, IS-IS/ISISv6, IRMP, PBR/PBRv6, BFD/BFDv6, VRRP/VRRPv6, FRR/FRRv6, SRv6 etc.

Rich Security

MPLS, VPLS, IPsec, GRE, L2TPv3, DMVPN, NAT, ACL, AAA, PKI, URL Filtering, Anti-attack, Error-Disable, etc.



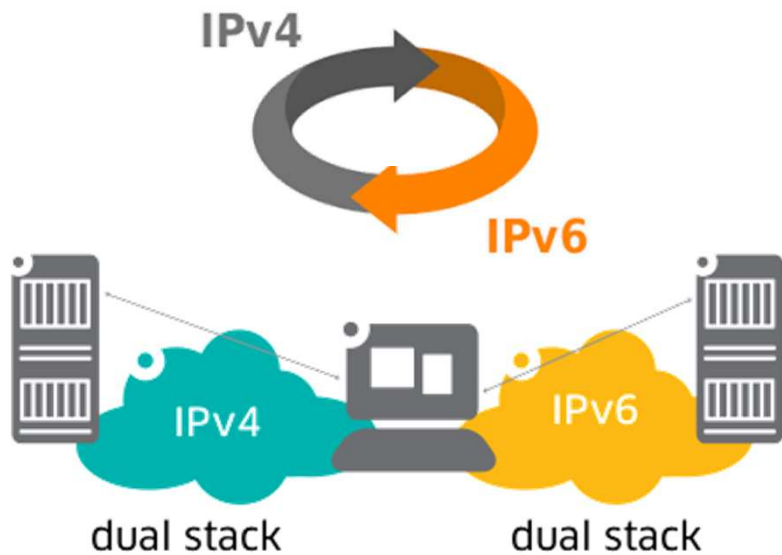
Switching Protocol

VLAN, MSTP, LACP, Port Security, LLDP, 802.1x, SPAN, Loop-Detection, Voice-VLAN, etc.

OAM Features

SNMP, RMON, TR069, Telemetry, Netconf, IPSLA, IPFIX, ZTP, etc.

IPV4 & IPV6 DUAL STACK



Specification	IPv6 Protocols
Dual Stack	TCPv6, UDPv6
NAT	NAT64, NAT66
Routing Protocol	Static Route v6, RIPNG, OSPFv3, BGP4+, ISISv6, PBRv6, VRRPv3
Multicast	PIMv6-SIM, PIMv6-SSM, MLDv1/v2
VPN	6PE, 6VPE, GREv6
IPv6 Tunnel	IPv4 in IPv6, IPv6 in IPv4, 6to4
Application	DHCPv6, DNSv6, NAT64, NAT66, IPv6 ACL, BFDv6, IPv6 ND, IPv6 PMTU, IPv6 FIB
Management	ICMPv6, IPv6 FTP, IPv6 Telnet, IPv6 SNMP

COMPLETE VPN FEATURES

IPSec VPN

Internet Protocol Security

GRE Tunnel

Generic Routing Encapsulation

L2TPv3

Layer 2 Tunneling Protocol

MPLS/VPLS VPN

Carrier Class VPN

VxLAN

Point-to-Point
Tunneling Protocol

DMVPN

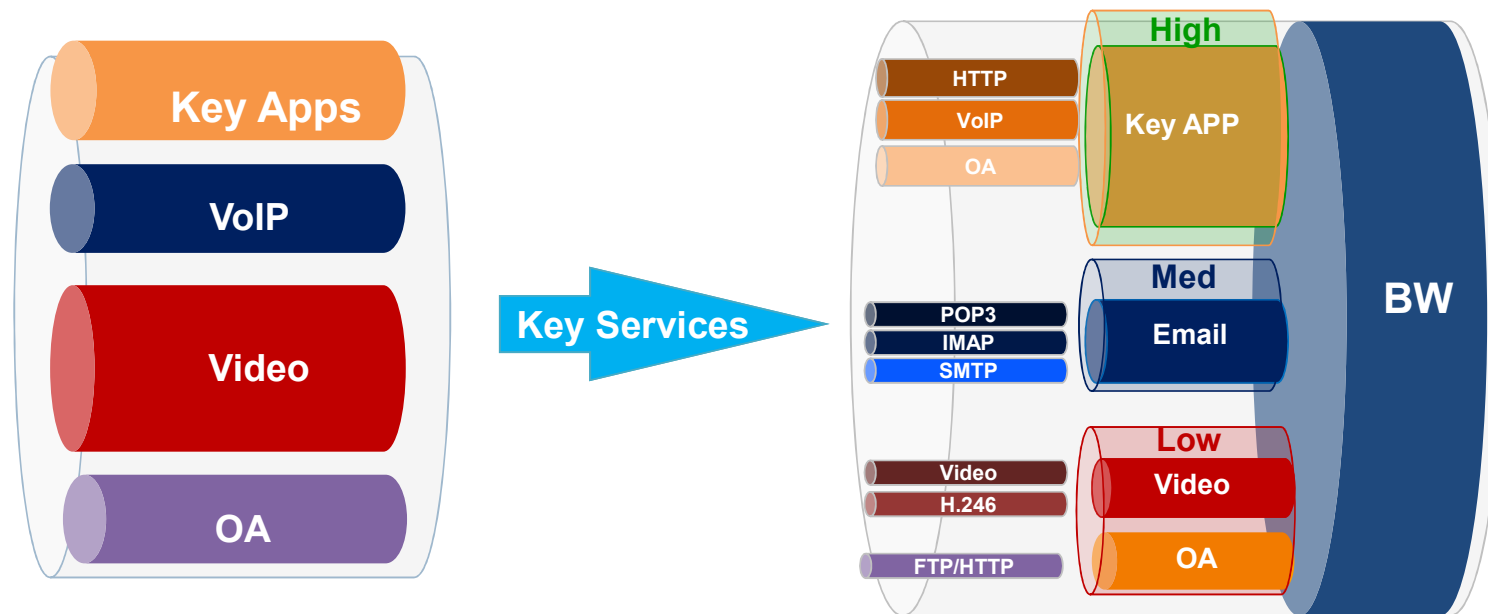
Point-to-Multipoint



ENSURE THE SECURITY OF WAN NETWORK

MAIPU, MAKE IT INTELLIGENT

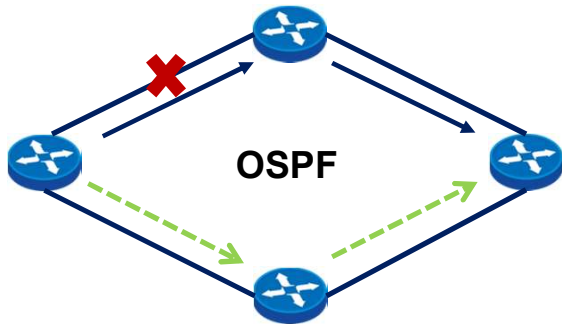
HIERARCHICAL QOS(H-QOS)



H-QOS ENSURE SLA OF CUSTOMER SERVICES

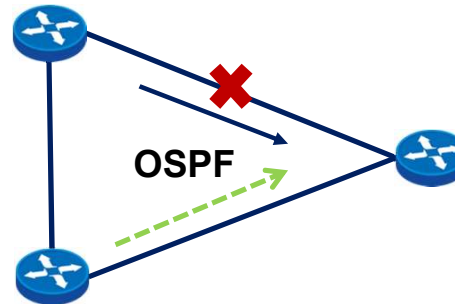
/// HIGH AVAILABILITY

BFD Detection



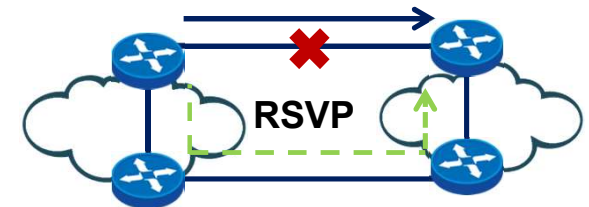
Link Fault Detection	Convergence Time
OSPF Keepalive Timer	10s Seconds
BFD Session Timer	Less than 1 Second

IP FRR



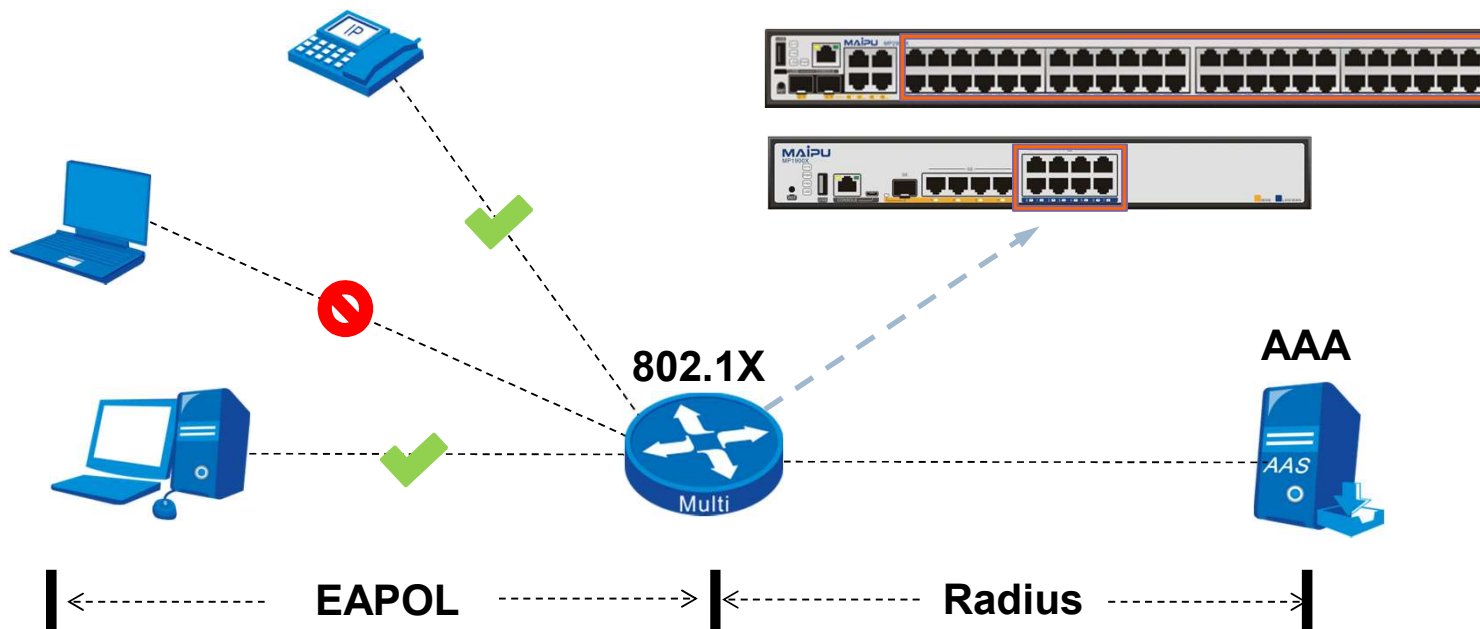
Link Fault Detection	Convergence Time
OSPF Keepalive Timer	10s Seconds
FRR Session Timer	Less than 1 Second

MPLS TE FRR



Link Fault Detection	Convergence Time
IGP Keepalive Timer	10s Seconds
RSVP-FRR Session Timer	Less than 1 Second

NETWORK ACCESS CONTROL (NAC)



ENSURE THE SECURITY OF TERMINAL ACCESS

MANAGEMENT AND TROUBLESHOOTING

MANAGEMENT

- SNMP
- TR069
- RMON
- TELEMETRY

LINK DETECTION

- KEEP ALIVE
- BSM
- ULFD
- IPSLA

CONFIGURATION

- CONSOLE
- SSH
- WEB
- TELNET
- ZTP
- NETCONF

MONITORING

- IPFIX
- SPAN
- PACKET CAPTURE
- DEBUG

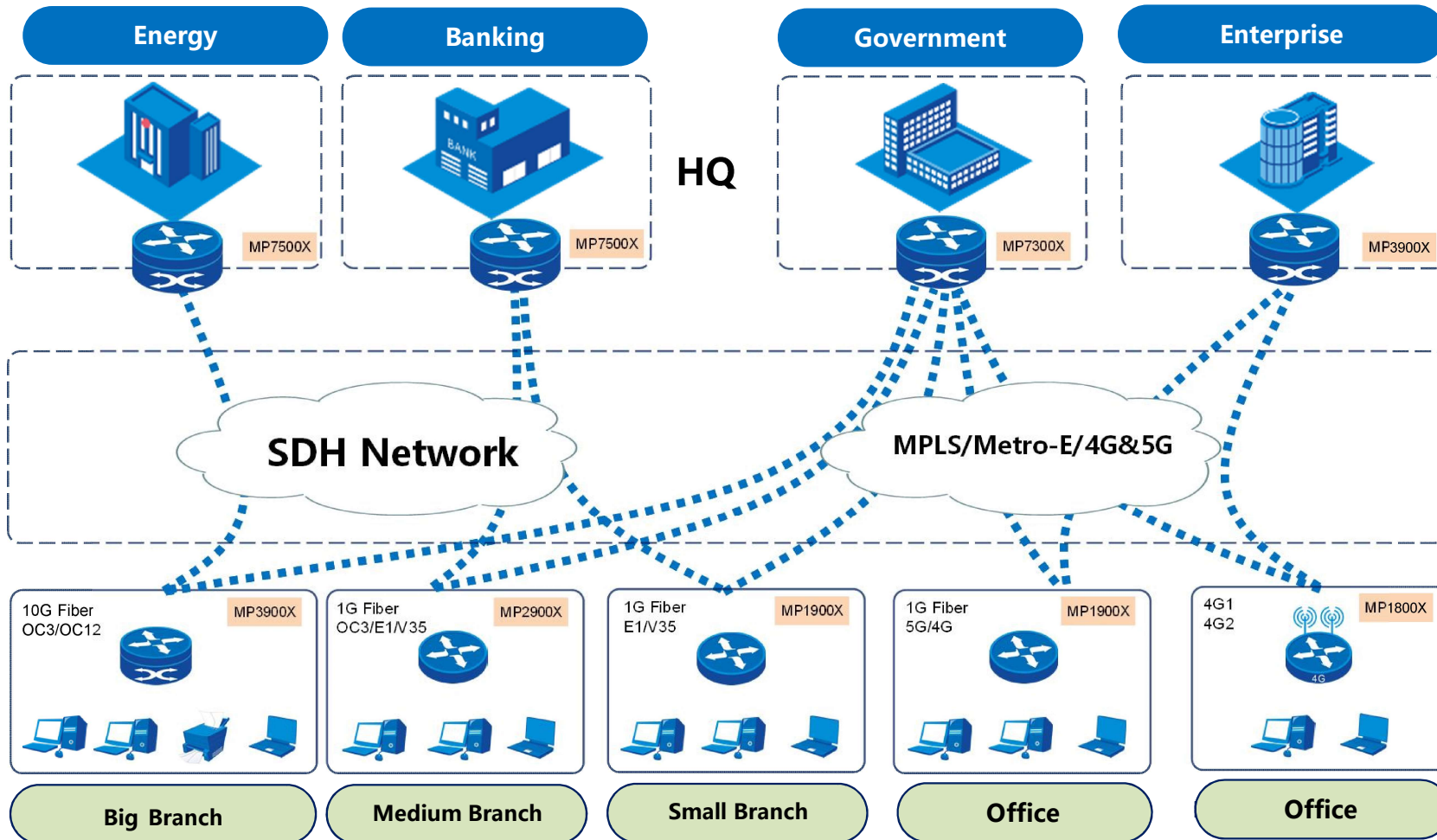
AGENDA

C O N T E N T S

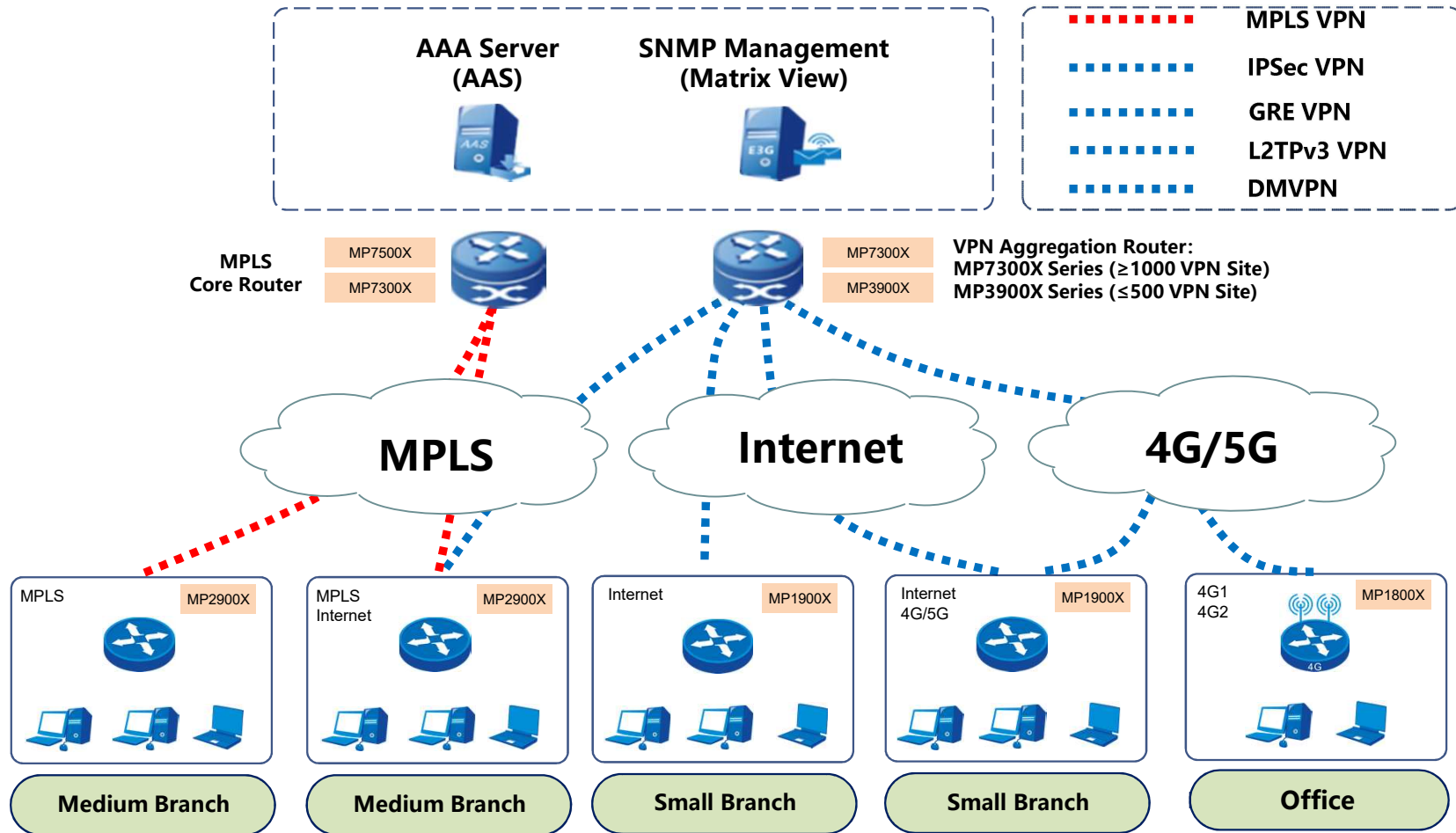
CHAPTER 1	MAIPU MP SERIES ENTERPRISE ROUTER
CHAPTER 2	MAIPU NSR SERIES ENTERPRISE ROUTER
CHAPTER 3	MAIPU ROUTER SOFTWARE FEATURES
CHAPTER 4	MAIPU ROUTER TYPICAL APPLICATIONS



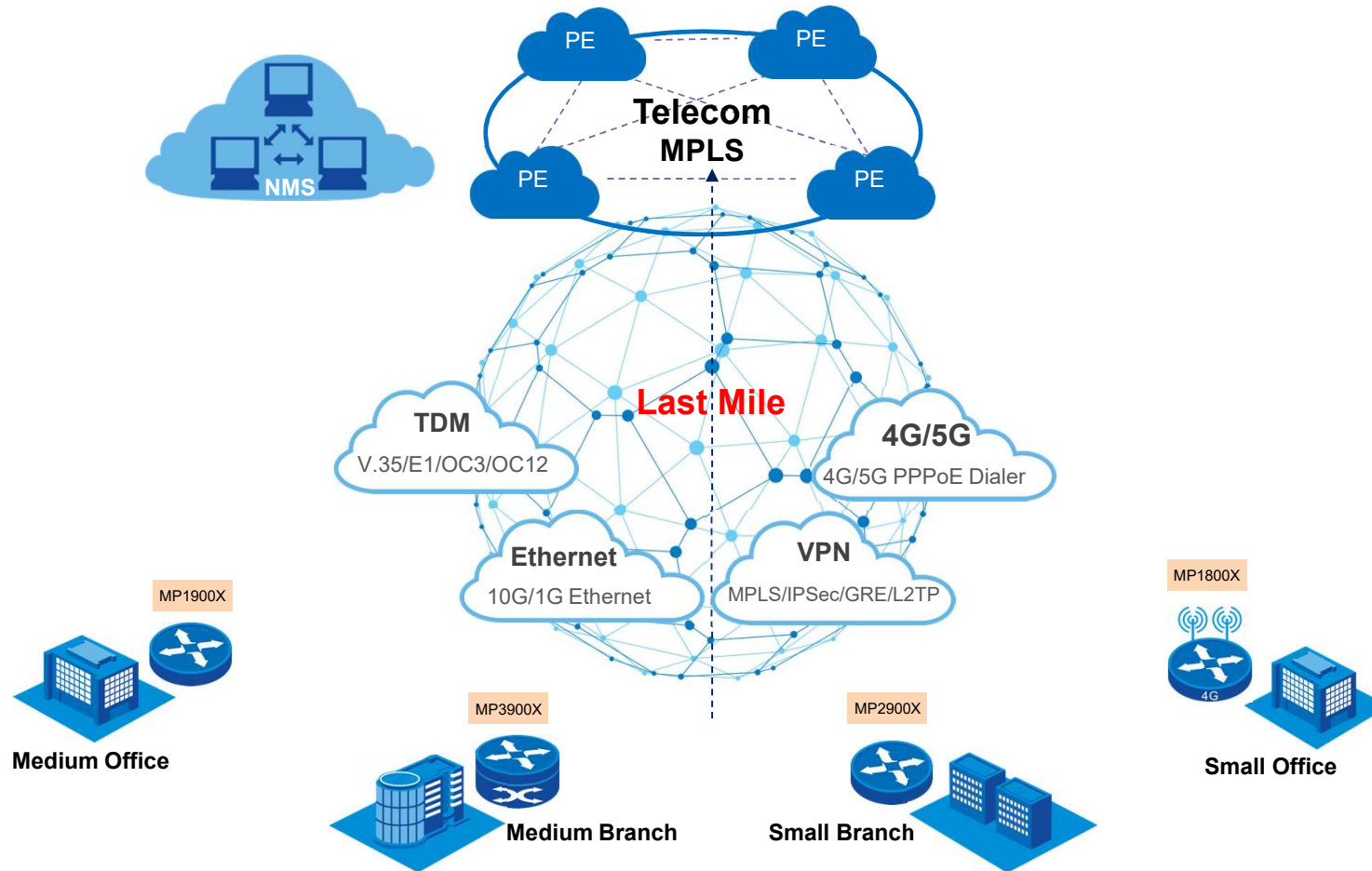
GOVERNMENT AND ENTERPRISE WAN SOLUTION



ENTERPRISE END-TO-END 4G/5G VPN SOLUTION



TELECOM MANAGED CPE SOLUTION



MAIPU
MAKE IT INTELLIGENT

THANKS

MAIPU, MAKE IT INTELLIGENT

迈普大厦

E-mail: overseas@maipu.com | Web: www.maipu.com | Tel: +86-28-65544850



MAIPU, MAKE IT INTELLIGENT