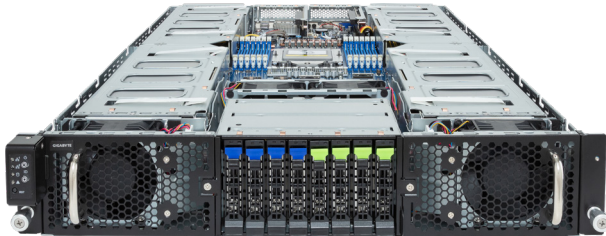


# G293-Z21-AAP1

GPU Server - 2U UP 4-GPU 8-bay NVMe/SATA



## Features

- Supports up to 4 x dual-slot Gen5 GPU cards
- AMD EPYC™ 9004 series processors
- Single processor, 5nm technology
- 12-Channel RDIMM DDR5, 12 x DIMMs
- Dual ROM Architecture supported
- 2 x 10Gb/s BASE-T LAN ports
- 1 x Dedicated management port
- 4 x 2.5" Gen5 NVMe/SATA hot-swappable bays
- 4 x 2.5" SATA hot-swappable bays
- 2 x M.2 slots with PCIe Gen5 x4 interface
- 4 x PCIe Gen5 x16 or 8 x PCIe Gen5 x8 FHFL slots for GPUs
- 2 x LP PCIe Gen5 x16 slots for add-on cards
- Dual 3000W (240V) 80 PLUS Titanium redundant power supply

## Specification

<b>Dimensions</b>	2U (W448 x H87.5 x D800mm)	<b>TPM</b>	1 x TPM header with SPI interface Optional TPM2.0 kit: CTM010
<b>Motherboard</b>	MZ23-G20	<b>Power Supply</b>	Dual 3000W 80 PLUS Titanium redundant power supply AC Input: 100-240V
<b>CPU</b>	AMD EPYC™ 9004 series processor family Single processor, 5nm technology, cTDP up to 300W Up to 84-core, 168 threads per processor 1 x LGA 6096 Socket SP5	<b>System Management</b>	Aspeed® AST2600 management controller GIGABYTE Management Console (AMI MegaRAC SP-X)
<b>Chipset</b>	System on Chip	<b>OS Compatibility</b>	Windows Server 2019 / 2022 RHEL 8.6 / 8.7 / 9.0 / 9.1 (x64) SLES 15 SP4 (x64) Ubuntu 20.04.5 LTS / 22.04 LTS / 22.04.1 LTS (x64) VMware ESXi 7.0 Update 3i / 8.0 Citrix Hypervisor 8.2.1
<b>Memory</b>	12 x DIMM slots 12-Channel DDR5 memory, up to 4800 MHz RDIMM modules up to 128GB supported 3DS RDIMM modules up to 256GB supported	<b>System Fans</b>	8 x 80x80x38mm (18,300rpm)
<b>LAN</b>	2 x 10Gb/s BASE-T LAN ports (1 x Broadcom® BCM57416) Supported NCSI function 1 x 10/100/1000 management LAN	<b>Operating Properties</b>	Operating temperature: 10°C to 35°C Operating humidity: 8-80% (non-condensing) Non-operating temperature: -40°C to 60°C Non-operating humidity: 20%-95% (non-condensing)
<b>Video</b>	Integrated in Aspeed AST2600 2D Video Graphic Adapter with PCIe bus interface 1920x1200@60Hz 32bpp, DDR4 SDRAM	<b>Packaging Content</b>	1 x G293-Z21 1 x CPU heatsink 1 x Rail kit
<b>Storage</b>	4 x 2.5" Gen5 NVMe/ SATA/ SAS hot-swappable bays 4 x 2.5" SATA/ SAS hot-swappable bays SAS card is required for SAS devices support	<b>Reference Numbers</b>	Barebone package: 6NG293Z21DR000AAP1* - Motherboard: 9MZ23G20UR-000 - Rail kit: 25HB2-A86102-K0R - CPU heatsink: 25ST1-25320N-M1R - Power supply: 25EP0-230005-G1S - C19 power cord 125V/15A (US): 25CP1-018000-Q0R (optional) - C19 power cord 250V/16A (EU): 25CP3-01830H-Q0R (optional)
<b>Expansion Slots</b>	4 x PCIe Gen5 x16 or 8 x PCIe Gen5 x8 FHFL slots for GPUs 2 x PCIe Gen5 x16 low-profile slots 2 x M.2 slots:M-key, PCIe Gen5 x4, supports 2280/22110 cards		
<b>Rear I/O</b>	2 x USB 3.2 Gen1, 1 x VGA, 2 x RJ45, 1 x MLAN		
<b>Backplane I/O</b>	PCIe Gen5 x4 or SATA 6Gb/s or SAS 12Gb/s		



Learn more about GIGABYTE server, visit <https://www.gigacomputing.com>

\* All specifications are subject to change without notice. Please visit our website for the latest information.  
\* AMD, the AMD Arrow logo, EPYC and combinations thereof are trademarks of Advanced Micro Devices, Inc.  
\* All other brands, logos and names are property of their respective owners.

© 2023 Giga Computing Technology Co., Ltd. All rights reserved.

Engineered by

