

CloudEngine S1730S Series Switches



CloudEngine S1730S series switches are Huawei's next-generation energy-saving Ethernet access switches. They can be widely used in Ethernet access scenarios such as small- and medium-sized enterprises, Internet cafes, hotels, and schools.

Product Overview



CloudEngine S1730S series switches come with rich service features and are easy to install and maintain, helping customers build secure, reliable, and high-performance networks. Based on network management types, CloudEngine S1730S series switches can be classified into three types — CloudEngine S1730S-L SOHO unmanaged switches, CloudEngine S1730S-S web-managed switches, and CloudEngine S1730S-H fully-managed switches.

Product Models and Appearances


CloudEngine S1730S-H fully-managed series products

Appearance	Description
 <p>CloudEngine S1730S-H24T4S-A</p>	<ul style="list-style-type: none"> • 24 x 10/100/1000BASE-T ports, 4 x GE SFP ports • AC power supply, built-in AC power module • Packet forwarding rate: 42 Mpps • Switching capacity: 168 Gbit/s
 <p>CloudEngine S1730S-H48T4S-A</p>	<ul style="list-style-type: none"> • 48 x 10/100/1000BASE-T ports, 4 x GE SFP ports • AC power supply, built-in AC power module • Packet forwarding rate: 78 Mpps • Switching capacity: 216 Gbit/s








CloudEngine S1730S-S web-managed series products





Appearance	Description
 <p>CloudEngine S1730S-S8T4S-A1</p>	<ul style="list-style-type: none"> • 8 x 10/100/1000BASE-T ports, 4 x GE SFP ports • AC power supply, built-in AC power module • Packet forwarding rate: 18 Mpps • Switching capacity: 336 Gbit/s
 <p>CloudEngine S1730S-S8P4S-A1</p>	<ul style="list-style-type: none"> • 8 x 10/100/1000BASE-T ports, 4 x GE SFP ports • AC power supply, built-in AC power module • PoE+ • Packet forwarding rate: 18 Mpps • Switching capacity: 336 Gbit/s

Appearance	Description
 CloudEngine S1730S-S24T4S-A1	<ul style="list-style-type: none"> • 24 x 10/100/1000BASE-T ports, 4 x GE SFP ports • AC power supply, built-in AC power module • Packet forwarding rate: 42 Mpps • Switching capacity: 336 Gbit/s
 CloudEngine S1730S-S24P4S-A1	<ul style="list-style-type: none"> • 24 x 10/100/1000BASE-T ports, 4 x GE SFP ports • AC power supply, built-in AC power module • PoE+ • Packet forwarding rate: 42 Mpps • Switching capacity: 336 Gbit/s
 CloudEngine S1730S-S24T4X-A1	<ul style="list-style-type: none"> • 24 x 10/100/1000BASE-T ports, 4 x 10GE SFP+ ports • AC power supply, built-in AC power module • Packet forwarding rate: 96 Mpps • Switching capacity: 336 Gbit/s
 CloudEngine S1730S-S48T4S-A1	<ul style="list-style-type: none"> • 48 x 10/100/1000BASE-T ports, 4 x GE SFP ports • AC power supply, built-in AC power module • Packet forwarding rate: 78 Mpps • Switching capacity: 432 Gbit/s
 CloudEngine S1730S-S48P4S-A1	<ul style="list-style-type: none"> • 48 x 10/100/1000BASE-T ports, 4 x GE SFP ports • AC power supply, built-in AC power module • PoE+ • Packet forwarding rate: 78 Mpps • Switching capacity: 432 Gbit/s
 CloudEngine S1730S-S48T4X-A1	<ul style="list-style-type: none"> • 48 x 10/100/1000BASE-T ports, 4 x 10GE SFP+ ports • AC power supply, built-in AC power module • Packet forwarding rate: 132 Mpps • Switching capacity: 432 Gbit/s
 CloudEngine S1730S-S24T4S-A	<ul style="list-style-type: none"> • 24 x 10/100/1000BASE-T ports, 4 x GE SFP ports • AC power supply, built-in AC power module • Packet forwarding rate: 42 Mpps • Switching capacity: 168 Gbit/s
 CloudEngine S1730S-S24P4S-A	<ul style="list-style-type: none"> • 24 x 10/100/1000BASE-T ports, 4 x GE SFP ports • 24 x PoE+ ports • AC power supply, built-in AC power module • Packet forwarding rate: 42 Mpps • Switching capacity: 168 Gbit/s
 CloudEngine S1730S-S48T4S-A	<ul style="list-style-type: none"> • 48 x 10/100/1000BASE-T ports, 4 x GE SFP ports • AC power supply, built-in AC power module • Packet forwarding rate: 78 Mpps • Switching capacity: 216 Gbit/s
 CloudEngine S1730S-S48P4S-A	<ul style="list-style-type: none"> • 48 x 10/100/1000BASE-T ports, 4 x GE SFP ports • 48 x PoE+ ports • AC power supply, AC power module • Packet forwarding rate: 78 Mpps

Appearance	Description
	<ul style="list-style-type: none"> Switching capacity: 216 Gbit/s
CloudEngine S1730S-S24T4X-A	<ul style="list-style-type: none"> 24 x 10/100/1000BASE-T ports, 4 x 10GE SFP+ ports AC power supply, built-in AC power module Packet forwarding rate: 78 Mpps Switching capacity: 168 Gbit/s

CloudEngine S1730S-L SOHO unmanaged series products

Appearance	Description
	<ul style="list-style-type: none"> 8 x 10/100/1000BASE-T ports 4 x PoE+ ports AC power supply, built-in AC power module Packet forwarding rate: 12 Mpps Switching capacity: 16 Gbit/s
CloudEngine S1730S-L4P4T-A	
	<ul style="list-style-type: none"> 8 x 10/100/1000BASE-T ports AC power supply, power adapter Packet forwarding rate: 12 Mpps Switching capacity: 16 Gbit/s
CloudEngine S1730S-L8T-A	
	<ul style="list-style-type: none"> 8 x 10/100/1000BASE-T ports 8 x PoE+ ports AC power supply, built-in AC power module Packet forwarding rate: 12 Mpps Switching capacity: 16 Gbit/s
CloudEngine S1730S-L8P-A	
	<ul style="list-style-type: none"> 16 x 10/100/1000BASE-T ports AC power supply, built-in AC power module Packet forwarding rate: 24 Mpps Switching capacity: 32 Gbit/s
CloudEngine S1730S-L16T-A	
	<ul style="list-style-type: none"> 16 x 10/100/1000BASE-T ports 16 x PoE+ ports AC power supply, built-in AC power module Packet forwarding rate: 24 Mpps Switching capacity: 32 Gbit/s
CloudEngine S1730S-L16P-A	
	<ul style="list-style-type: none"> 24 x 10/100/1000BASE-T ports AC power supply, built-in AC power module Packet forwarding rate: 36 Mpps Switching capacity: 48 Gbit/s
CloudEngine S1730S-L24T-A	
	<ul style="list-style-type: none"> 24 x 10/100/1000BASE-T ports AC power supply, built-in AC power module Packet forwarding rate: 36 Mpps Switching capacity: 48 Gbit/s
CloudEngine S1730S-L24TR-A	

Appearance	Description
 <p>CloudEngine S1730S-L24P-A</p>	<ul style="list-style-type: none"> • 24 x 10/100/1000BASE-T ports • 24 x PoE+ ports • AC power supply, built-in AC power module • Packet forwarding rate: 36 Mpps • Switching capacity: 48 Gbit/s
 <p>CloudEngine S1730S-L4P1T-BUA</p>	<ul style="list-style-type: none"> • 4 x 10/100/1000BASE-T PoE+ ports • 1 x 10/100/1000BASE-T port • Standard AC adapter • Packet forwarding rate: 7.44 Mpps • Switching capacity: 10 Gbit/s
 <p>CloudEngine S1730S-L8P2T-BUA</p>	<ul style="list-style-type: none"> • 8 x 10/100/1000BASE-T PoE+ ports • 2 x 10/100/1000BASE-T ports • Standard AC adapter • Packet forwarding rate: 14.88 Mpps • Switching capacity: 20 Gbit/s
 <p>CloudEngine S1730S-L8LP2T-BUA</p>	<ul style="list-style-type: none"> • 8 x 10/100/1000BASE-T PoE+ ports • 2 x 10/100/1000BASE-T ports • AC adapter • Packet forwarding rate: 14.88 Mpps • Switching capacity: 20 Gbit/s

Product Features and Highlights

All-New Energy-Saving Design, Leading Low-Carbon Communications

- CloudEngine S1730S series switches support automatic port sleeping when no connection is available.
- The models — that adopt a fanless design — are noise and consume less power.

Non-Blocking and High-Speed Forwarding

- All ports on CloudEngine S1730S series switches provide Layer 2 line-rate switching capabilities, achieving non-blocking packet forwarding.
- CloudEngine S1730S unmanaged series switches provide up to 8K MAC addresses while CloudEngine S1730S web-based and fully-managed series products provide up to 16K MAC addresses. This helps enterprise users in future capacity expansion, greatly facilitating the expansion and application by users.
- CloudEngine S1730S series switches provide the traffic control function. When congestion occurs on the local device, it sends a message to its peer device to instruct the peer device to temporarily stop sending packets, thus avoiding congestion.

PoE Power Supply

CloudEngine S1730S web-managed series PoE models support the following capabilities:

- Fast PoE: PoE switches can supply power to PDs within seconds after they are powered on. This is different from common switches that need 1 to 3 minutes before supplying power to PDs. When a PoE switch restarts due to a power failure, it continues to supply power to the PDs as long as it is powered. This greatly shortens the power-off time of PDs.
- Perpetual PoE: When a PoE switch restarts (for example, during software upgrade), the PoE switch continues to supply power to its downstream PDs, ensuring uninterrupted PoE power supply.

PoE Compatibility Check

CloudEngine S1730S unmanaged series switches provide a PD compatibility check button, which provides the following capabilities:

- PoE: The PD compatibility check function is disabled. The switch can supply power only to PDs that comply with 802.3af and 802.3at.
- E-PoE: The PD compatibility check function is enabled. The switch can detect and supply power to PDs that do not comply with 802.3af or 802.3at, as well as standard PDs that are detected as non-standard PDs because of the external environment.

Convenient Management and Maintenance

- CloudEngine S1730S web-managed series switches provide a visualized web-based graphical user interface (GUI) for easy operations on switch functions.
- CloudEngine S1730S fully-managed series switches support SNMPv1, SNMPv2c, SNMPv3, web system, and CLI-based configuration.

Intelligent O&M

- CloudEngine S1730S web-managed and fully-managed series switches support the intelligent O&M of audio services. Based on the Enhanced Media Delivery Index (eMDI) feature, these switches can function as monitoring nodes to periodically collect statistics on audio service indicators and report the indicators to iMaster NCE-CampusInsight. iMaster NCE-CampusInsight then combines the monitoring results of multiple nodes and quickly demarcates faults related to audio service quality.

Smart Upgrade

- Based on Huawei Online Upgrade Repository (HOUP), CloudEngine S1730S series switches support smart upgrade. They obtain the version upgrade path from the HOUP and download the new version. The upgrade process is highly automated as it supports one-click upgrade. In addition, this feature supports version pre-loading, which enormously shortens the upgrade time and reduces the service interruption time.
- Smart upgrade greatly simplifies device upgrade operations, making it possible for customers to upgrade versions by themselves. This feature helps customers reduce considerable maintenance costs. In addition, the upgrade policies on HOUP standardize the upgrade path, greatly reducing the risks of upgrade failure.

Superb Security Performance

- CloudEngine S1730S web-managed and fully-managed series switches support various security features, such as security authentication modes like 802.1X, RADIUS, Portal, and NAC. These switches also support MAC address filtering and port filtering to effectively defend against hacker and virus attacks, providing secure and reliable network services.

Powerful Networking and Bandwidth Expansion

- CloudEngine S1730S web-managed and fully-managed series switches provide multiple functions, including LACP, STP, RSTP, and MSTP, for efficient link expansion and backup.

Product Specifications

CloudEngine S1730S-H fully-managed series products

Product Model	CloudEngine S1730S-H24T4S-A	CloudEngine S1730S-H48T4S-A
Fixed port	24 x 10/100/1000BASE-T ports, 4 x GE SFP ports	48 x 10/100/1000BASE-T ports, 4 x GE SFP ports
Dimensions (H x W x D)	43.6 mm x 442 mm x 220 mm	43.6 mm x 442 mm x 220 mm
Chassis height	1 U	1 U
Power module type	Built-in AC power module	Built-in AC power module
Rated voltage	<ul style="list-style-type: none">• AC input: 100 V AC to 240 V AC, 50/60 Hz• High-voltage DC input: 240 V DC	<ul style="list-style-type: none">• AC input: 100 V AC to 240 V AC, 50/60 Hz• High-voltage DC input: 240 V DC

Product Model	CloudEngine S1730S-H24T4S-A	CloudEngine S1730S-H48T4S-A
Maximum voltage	<ul style="list-style-type: none"> AC input: 90 V AC to 264 V AC, 47 Hz to 63 Hz High-voltage DC input: 190 V DC to 290 V DC 	<ul style="list-style-type: none"> AC input: 90 V AC to 264 V AC, 47 Hz to 63 Hz High-voltage DC input: 190 V DC to 290 V DC
Maximum power consumption	34 W	53 W
Operating temperature	-5°C to +45°C	-5°C to +50°C
Storage temperature	-40°C to +70°C	
Relative humidity	5% to 95% (non-condensing)	
Service port surge protection	±10 kV	±10 kV
Power port surge protection	±6 kV in differential mode, ±6 kV in common mode	±6 kV in differential mode, ±6 kV in common mode
Heat dissipation mode	Fanless, natural heat dissipation	Air cooling heat dissipation, intelligent fan speed adjustment, and one fan module

CloudEngine S1730S-S web-managed series products

Product Model	CloudEngine S1730S-S8T4S-A1	CloudEngine S1730S-S8P4S-A1	CloudEngine S1730S-S24T4S-A1	CloudEngine S1730S-S24P4S-A1
Fixed port	8 x 10/100/1000BASE-T ports, 4 x GE SFP ports	8 x 10/100/1000BASE-T ports, 4 x GE SFP ports	24 x 10/100/1000BASE-T ports, 4 x GE SFP ports	24 x 10/100/1000BASE-T ports, 4 x GE SFP ports
Dimensions (H x W x D)	43.6 mm x 250 mm x 187 mm	43.6 mm x 300 mm x 220 mm	43.6 mm x 442 mm x 220 mm	43.6 mm x 442 mm x 220 mm
Chassis height	1 U	1 U	1 U	1 U
Power module type	Built-in AC power module	Built-in AC power module	Built-in AC power module	Built-in AC power module
Rated voltage	<ul style="list-style-type: none"> AC input: 100 V AC to 240 V AC, 50/60 Hz 	<ul style="list-style-type: none"> AC input: 100 V AC to 240 V AC, 50/60 Hz 	<ul style="list-style-type: none"> AC input: 100 V AC to 240 V AC, 50/60 Hz 	<ul style="list-style-type: none"> AC input: 100 V AC to 240 V AC, 50/60 Hz High-voltage DC input: 240 V DC
Maximum voltage	<ul style="list-style-type: none"> AC input: 90 V AC to 290 V AC, 45 Hz to 65 Hz 	<ul style="list-style-type: none"> AC input: 90 V AC to 290 V AC, 45 Hz to 65 Hz 	<ul style="list-style-type: none"> AC input: 90 V AC to 290 V AC, 45 Hz to 65 Hz 	<ul style="list-style-type: none"> AC input: 90 V AC to 290 V AC, 45 Hz to 65 Hz High-voltage DC input: 190 V DC to 290 V DC
Maximum power consumption	29.7 W	<ul style="list-style-type: none"> Without PoE: 38.6 W With PoE: 162.6 W (PoE: 124 W) 	47.6 W	<ul style="list-style-type: none"> Without PoE: 53.2 W With PoE: 433.2 W (PoE: 380 W)
Service port surge protection	±10 kV	±10 kV	±10 kV	±10 kV

Product Model	CloudEngine S1730S-S8T4S-A1	CloudEngine S1730S-S8P4S-A1	CloudEngine S1730S-S24T4S-A1	CloudEngine S1730S-S24P4S-A1
Power port surge protection	±6 kV in differential mode, ±6 kV in common mode	±6 kV in differential mode, ±6 kV in common mode	±6 kV in differential mode, ±6 kV in common mode	±6 kV in differential mode, ±6 kV in common mode
Operating temperature	-5°C to +55°C	-5°C to +55°C	-5°C to +55°C	-5°C to +50°C
Storage temperature	-40°C to +70°C			
Relative humidity	5% to 95% (non-condensing)			
Heat dissipation mode	Air cooling heat dissipation, intelligent fan speed adjustment, and one fan module	Air cooling heat dissipation, intelligent fan speed adjustment, and one fan module	Air cooling heat dissipation, intelligent fan speed adjustment, and one fan module	Air cooling heat dissipation, intelligent fan speed adjustment, and two fan modules

Product Model	CloudEngine S1730S-S24T4X-A1	CloudEngine S1730S-S48T4S-A1	CloudEngine S1730S-S48P4S-A1	CloudEngine S1730S-S48T4X-A1
Fixed port	24 x 10/100/1000BASE-T ports, 4 x 10GE SFP+ ports	48 x 10/100/1000BASE-T ports, 4 x GE SFP ports	48 x 10/100/1000BASE-T ports, 4 x GE SFP ports	48 x 10/100/1000BASE-T ports, 4 x 10GE SFP+ ports
Dimensions (H x W x D)	43.6 mm x 442 mm x 220 mm	43.6 mm x 442 mm x 220 mm	43.6 mm x 442 mm x 220 mm	43.6 mm x 442 mm x 220 mm
Chassis height	1 U	1 U	1 U	1 U
Power module type	Built-in AC power module	Built-in AC power module	Built-in AC power module	Built-in AC power module
Rated voltage	<ul style="list-style-type: none"> AC input: 100 V AC to 240 V AC, 50/60 Hz 	<ul style="list-style-type: none"> AC input: 100 V AC to 240 V AC, 50/60 Hz 	<ul style="list-style-type: none"> AC input: 100 V AC to 240 V AC, 50/60 Hz High-voltage DC input: 240 V DC 	<ul style="list-style-type: none"> AC input: 100 V AC to 240 V AC, 50/60 Hz
Maximum voltage	<ul style="list-style-type: none"> AC input: 90 V AC to 290 V AC, 45 Hz to 65 Hz 	<ul style="list-style-type: none"> AC input: 90 V AC to 264 V AC, 47 Hz to 63 Hz 	<ul style="list-style-type: none"> AC input: 90 V AC to 290 V AC, 45 Hz to 65 Hz High-voltage DC input: 190 V DC to 290 V DC 	<ul style="list-style-type: none"> AC input: 90 V AC to 264 V AC, 47 Hz to 63 Hz
Maximum power consumption	47.6 W	50.4 W	<ul style="list-style-type: none"> Without PoE: 76.1 W With PoE: 456.1 W (PoE: 380 W) 	50.4 W
Operating temperature	-5°C to +55°C	-5°C to +50°C	-5°C to +50°C	-5°C to +50°C
Storage temperature	-40°C to +70°C			
Relative humidity	5% to 95% (non-condensing)			
Service port surge protection	±10 kV	±10 kV	±10 kV	±10 kV

Product Model	CloudEngine S1730S-S24T4X-A1	CloudEngine S1730S-S48T4S-A1	CloudEngine S1730S-S48P4S-A1	CloudEngine S1730S-S48T4X-A1
Power port surge protection	±6 kV in differential mode, ±6 kV in common mode	±6 kV in differential mode, ±6 kV in common mode	±6 kV in differential mode, ±6 kV in common mode	±6 kV in differential mode, ±6 kV in common mode
Heat dissipation mode	Air cooling heat dissipation, intelligent fan speed adjustment, and one fan module	Air cooling heat dissipation, intelligent fan speed adjustment, and one fan module	Air cooling heat dissipation, intelligent fan speed adjustment, and two fan modules	Air cooling heat dissipation, intelligent fan speed adjustment, and one fan module

Product Model	CloudEngine S1730S-S24T4S-A	CloudEngine S1730S-S24P4S-A	CloudEngine S1730S-S48T4S-A	CloudEngine S1730S-S48P4S-A	CloudEngine S1730S-S24T4X-A
Fixed port	24 x 10/100/1000BASE-T ports, 4 x GE SFP ports	24 x 10/100/1000BASE-T ports, 4 x GE SFP ports	48 x 10/100/1000BASE-T ports, 4 x GE SFP ports	48 x 10/100/1000BASE-T ports, 4 x GE SFP ports	24 x 10/100/1000BASE-T ports, 4 x 10GE SFP+ ports
Dimensions (H x W x D)	43.6 mm x 442 mm x 220 mm	43.6 mm x 442 mm x 220 mm	43.6 mm x 442 mm x 220 mm	43.6 mm x 442 mm x 420 mm	43.6 mm x 442 mm x 220 mm
Chassis height	1 U	1 U	1 U	1 U	1 U
Power module type	Built-in AC power module	Built-in AC power module	Built-in AC power module	1000 W PoE AC power module	Built-in AC power module
Rated voltage	<ul style="list-style-type: none"> AC input: 100 V AC to 240 V AC, 50/60 Hz High-voltage DC input: 240 V DC 	<ul style="list-style-type: none"> AC input: 100 V AC to 240 V AC, 50/60 Hz High-voltage DC input: 240 V DC 	<ul style="list-style-type: none"> AC input: 100 V AC to 240 V AC, 50/60 Hz High-voltage DC input: 240 V DC 	<ul style="list-style-type: none"> AC input: 100 V AC to 130 V AC, 200 V AC to 240 V AC, 50/60 Hz High-voltage DC input: 240 V DC 	<ul style="list-style-type: none"> AC input: 100 V AC to 240 V AC, 50/60 Hz High-voltage DC input: 240 V DC
Maximum voltage	<ul style="list-style-type: none"> AC input: 90 V AC to 264 V AC, 47 Hz to 63 Hz High-voltage DC input: 190 V DC to 290 V DC 	<ul style="list-style-type: none"> AC input: 90 V AC to 264 V AC, 47 Hz to 63 Hz High-voltage DC input: 190 V DC to 290 V DC 	<ul style="list-style-type: none"> AC input: 90 V AC to 264 V AC, 47 Hz to 63 Hz High-voltage DC input: 190 V DC to 290 V DC 	<ul style="list-style-type: none"> AC input: 90 V AC to 290 V AC, 45 Hz to 65 Hz High-voltage DC input: 190 V DC to 290 V DC 	<ul style="list-style-type: none"> AC input: 90 V AC to 264 V AC, 47 Hz to 63 Hz High-voltage DC input: 190 V DC to 290 V DC
Maximum power consumption	34 W	<ul style="list-style-type: none"> Without PoE: 53 W 100% PoE loads: 451 W (PoE: 380 W) 	53 W	<ul style="list-style-type: none"> Without PoE: 75 W With PoE: 911 W (PoE: 874 W) 	43 W
Operating temperature	-5°C to +45°C	-5°C to +50°C	-5°C to +50°C	-5°C to +50°C	-5°C to +50°C
Storage temperature	-40°C to +70°C				
Relative humidity	5% to 95% (non-condensing)				
Service port surge protection	±10 kV	±10 kV	±10 kV	±10 kV	±10 kV
Power port	±6 kV in differential	±6 kV in differential	±6 kV in differential	±6 kV in differential	±6 kV in differential

Product Model	CloudEngine S1730S-S24T4S-A	CloudEngine S1730S-S24P4S-A	CloudEngine S1730S-S48T4S-A	CloudEngine S1730S-S48P4S-A	CloudEngine S1730S-S24T4X-A
surge protection	mode, ± 6 kV in common mode	mode, ± 6 kV in common mode	mode, ± 6 kV in common mode	mode, ± 6 kV in common mode	mode, ± 6 kV in common mode
Heat dissipation mode	Fanless, natural heat dissipation	Air cooling heat dissipation, intelligent fan speed adjustment, and two fan modules	Air cooling heat dissipation, intelligent fan speed adjustment, and one fan module	Air cooling heat dissipation, intelligent fan speed adjustment, and two fan modules	Air cooling heat dissipation, intelligent fan speed adjustment, and one fan module

CloudEngine S1730S-L SOHO unmanaged series products

Product Model	S1730S-L8T-A	S1730S-L4P4T-A	S1730S-L8P-A	S1730S-L16T-A	S1730S-L16P-A	S1730S-L24T-A	S1730S-L24P-A	S1730S-L24TR-A
Fixed port	8 x 10/100/1000BASE-T ports	8 x 10/100/1000BASE-T ports	8 x 10/100/1000BASE-T ports	16 x 10/100/1000BASE-T ports	16 x 10/100/1000BASE-T ports	24 x 10/100/1000BASE-T ports	24 x 10/100/1000BASE-T ports	24 x 10/100/1000BASE-T ports
Dimensions (H x W x D)	28 mm x 160 mm x 120 mm	43.6 mm x 250 mm x 180 mm	43.6 mm x 250 mm x 180 mm	43.6 mm x 250 mm x 180 mm	43.6 mm x 442 mm x 220 mm	43.6 mm x 250 mm x 180 mm	43.6 mm x 442 mm x 220 mm	43.6 mm x 442 mm x 220 mm
Chassis height	< 1 U	1 U	1 U	1 U	1 U	1 U	1 U	1 U
Power module type	12 V/0.5 A adapter	Built-in AC power module	Built-in AC power module	Built-in AC power module	Built-in AC power module	Built-in AC power module	Built-in AC power module	Built-in AC power module
Rated voltage	AC input: 170 V AC to 240 V AC, 50 Hz to 60 Hz	AC input: 100 V AC to 240 V AC, 50 Hz to 60 Hz	AC input: 100 V AC to 240 V AC, 50 Hz to 60 Hz	AC input: 100 V AC to 240 V AC, 50 Hz to 60 Hz	AC input: 100 V AC to 240 V AC, 50 Hz to 60 Hz	AC input: 100 V AC to 240 V AC, 50 Hz to 60 Hz	AC input: 100 V AC to 240 V AC, 50 Hz to 60 Hz	AC input: 100 V AC to 240 V AC, 50 Hz to 60 Hz
Maximum voltage	AC input: 150 V AC to 264 V AC, 47 Hz to 63 Hz	AC input: 90 V AC to 264 V AC, 47 Hz to 63 Hz	AC input: 90 V AC to 264 V AC, 47 Hz to 63 Hz	AC input: 90 V AC to 264 V AC, 47 Hz to 63 Hz	AC input: 90 V AC to 264 V AC, 47 Hz to 63 Hz	AC input: 90 V AC to 264 V AC, 47 Hz to 63 Hz	AC input: 90 V AC to 264 V AC, 47 Hz to 63 Hz	AC input: 90 V AC to 264 V AC, 47 Hz to 63 Hz
Maximum power consumption	5 W	<ul style="list-style-type: none"> Without PoE: 10 W With PoE: 144 W (PoE: 124 W) 	<ul style="list-style-type: none"> Without PoE: 10 W With PoE: 143 W (PoE: 124 W) 	10 W	<ul style="list-style-type: none"> Without PoE: 15 W With PoE: 146 W (PoE: 124 W) 	16 W	<ul style="list-style-type: none"> Without PoE: 34 W With PoE: 418 W (PoE: 370 W) 	16 W
Operating temperature	-5°C to +45°C							
Storage temperature	-40°C to +70°C							
Relative humidity	5% to 95% (non-condensing)							
Service port surge	± 10 kV	± 10 kV	± 10 kV	± 10 kV	± 10 kV	± 10 kV	± 10 kV	± 10 kV

Product Model	S1730S-L8T-A	S1730S-L4P4T-A	S1730S-L8P-A	S1730S-L16T-A	S1730S-L16P-A	S1730S-L24T-A	S1730S-L24P-A	S1730S-L24TR-A
protection								
Power port surge protection	±4 kV in differential mode, ±4 kV in common mode	±6 kV in differential mode, ±6 kV in common mode	±6 kV in differential mode, ±6 kV in common mode	±6 kV in differential mode, ±6 kV in common mode	±6 kV in differential mode, ±6 kV in common mode	±6 kV in differential mode, ±6 kV in common mode	±6 kV in differential mode, ±6 kV in common mode	±6 kV in differential mode, ±6 kV in common mode
Heat dissipation mode	Fanless, natural heat dissipation	Fanless, natural heat dissipation	Fanless, natural heat dissipation	Fanless, natural heat dissipation	Fanless, natural heat dissipation	Fanless, natural heat dissipation	Air cooling heat dissipation, intelligent fan speed adjustment	Fanless, natural heat dissipation

Product Model	S1730S-L4P1T-BUA	S1730S-L8P2T-BUA	S1730S-L8LP2T-BUA
Fixed port	4 x 10/100/1000BASE-T PoE+ ports, 1 x 10/100/1000BASE-T port	8 x 10/100/1000BASE-T PoE+ ports, 2 x 10/100/1000BASE-T ports	8 x 10/100/1000BASE-T PoE+ ports, 2 x 10/100/1000BASE-T ports
Packet forwarding rate	7.44 Mpps	14.88 Mpps	14.88 Mpps
Switching capacity	10 Gbit/s	20 Gbit/s	20 Gbit/s
Dimensions (H x W x D)	29 mm x 230 mm x 49.5 mm	29 mm x 230 mm x 49.5 mm	29 mm x 230 mm x 49.5 mm
Chassis height	< 1 U	< 1 U	< 1 U
Power module type	AC power supply, standard AC adapter	AC power supply, standard AC adapter	AC power supply, AC adapter
Rated voltage	AC input: 100 V AC to 240 V AC, 50 Hz to 60 Hz	AC input: 100 V AC to 240 V AC, 50 Hz to 60 Hz	AC input: 100 V AC to 240 V AC, 50 Hz to 60 Hz
Maximum voltage	AC input: 90 V AC to 264 V AC, 47 Hz to 63 Hz	AC input: 90 V AC to 264 V AC, 47 Hz to 63 Hz	AC input: 90 V AC to 264 V AC, 47 Hz to 63 Hz
Maximum power consumption	<ul style="list-style-type: none"> Without PoE: 4 W With PoE: 67 W (PoE: 54 W) 	<ul style="list-style-type: none"> Without PoE: 8 W With PoE: 167 W (PoE: 124 W) 	<ul style="list-style-type: none"> Without PoE: 7 W With PoE: 63 W (PoE: 50 W)
Operating temperature	0°C to 40°C		
Storage temperature	-40°C to +70°C		
Relative humidity	5% to 95% (non-condensing)		
Service port surge protection	±4 kV in common mode	±4 kV in common mode	±4 kV in common mode

Product Model	S1730S-L4P1T-BUA	S1730S-L8P2T-BUA	S1730S-L8LP2T-BUA
Power port surge protection	±2 kV in differential mode, ±4 kV in common mode	±2 kV in differential mode, ±4 kV in common mode	±2 kV in differential mode, ±4 kV in common mode
Heat dissipation mode	Fanless, natural heat dissipation	Fanless, natural heat dissipation	Fanless, natural heat dissipation

Service Features

Table 1 CloudEngine S1730S SOHO unmanaged series

Item	CloudEngine S1730S SOHO Unmanaged Series
IEEE standard	<ul style="list-style-type: none"> IEEE 802.3 10BASE-T IEEE 802.3u 100BASE-TX IEEE 802.3ab 1000BASE-T ANSI/IEEE 802.3 Nway IEEE 802.3x IEEE 802.3af IEEE 802.3at
Port capability	<ul style="list-style-type: none"> Auto-negotiation on wire sequences Auto-negotiation of port attributes Transmission of Jumbo frames (maximum: 10,000) Automatic port sleeping
MAC address entry	<ul style="list-style-type: none"> 8K MAC address entries Aging time of MAC address entries: 5 minutes

Table 2 CloudEngine S1730S web-managed series

Item	CloudEngine S1730S Web-Managed Series
Interface basics	<ul style="list-style-type: none"> VLAN 802.1Q Port bridge Jumbo frame Port Up/Down detection Port auto-negotiation Interface MTU setting VLANIF interface Link aggregation Static port aggregation
Security feature	<ul style="list-style-type: none"> Port security Broadcast, multicast, and unknown unicast storm control Port isolation

Item	CloudEngine S1730S Web-Managed Series
Basic Ethernet	4K VLANs Port types: access, trunk, hybrid, and QinQ Port-based VLAN assignment Automatic MAC address learning Automatic MAC address aging Static MAC address entry
STP	STP (IEEE 802.1d) RSTP (IEEE 802.1w) MSTP (IEEE 802.1s)
Multicast	IGMPv1 snooping, IGMPv2 snooping, and IGMPv3 snooping MLDv1 snooping and MLDv2 snooping
Routing feature	IPv4 and IPv6 static routes Dynamic and static ARP Neighbor Discovery (ND) DNS client
Quality of service (QoS)	Traffic policing Traffic rate limiting on ingress ports Port queue scheduling Congestion avoidance Traffic shaping on egress ports Advanced IPv4/IPv6 ACLs
User access	DHCP client DHCP relay DHCP server DHCP snooping 802.1X authentication MAC address authentication Portal authentication Administrator authentication NAC user authorization
Device management	Web system Electrical port sleeping IEEE 802.3az: Energy Efficient Ethernet (EEE) Smart upgrade
Device maintenance	Syslog (system log) Ping detection Port mirroring Line loopback monitoring Virtual cable test (VCT) Link Layer Discovery Protocol (LLDP) NTP

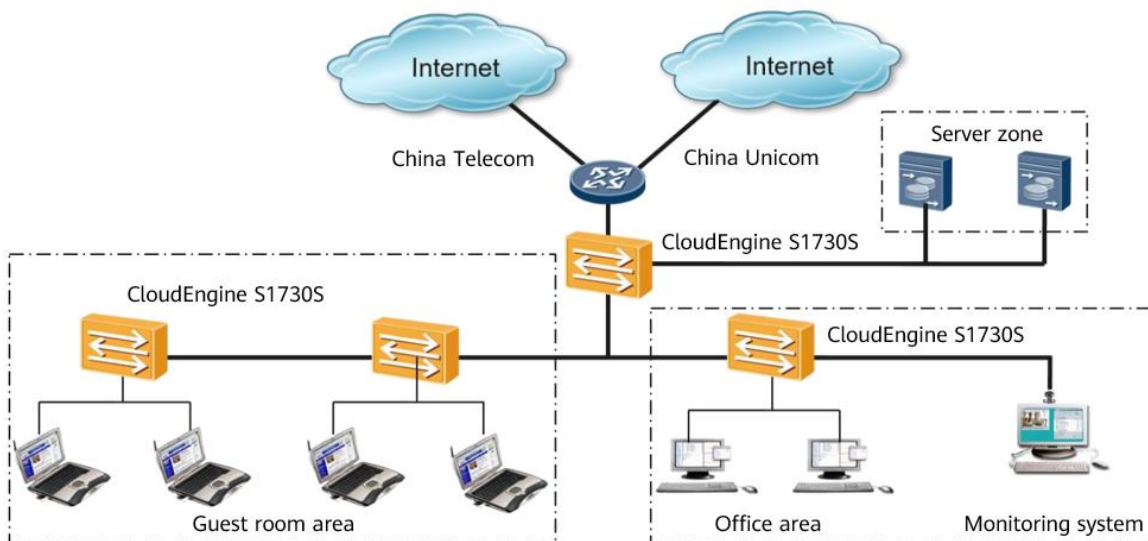
Table 3 CloudEngine S1730S fully-managed series

Item	CloudEngine S1730S Fully-Managed Series
Interface basics	<ul style="list-style-type: none"> VLAN 802.1Q Port bridge Jumbo frame Port Up/Down detection Port auto-negotiation Interface MTU setting VLANIF interface Link aggregation Static port aggregation
Security feature	<ul style="list-style-type: none"> Hardware ACL Port-based MAC address filtering MAC address authentication Port-based 802.1X authentication RADIUS authentication Portal authentication Port isolation Port storm suppression System self-defense, preventing CPU-targeted broadcast traffic, ARP attacks, ICMP attacks, TCP attacks, worm viruses, and denial of service (DoS) attacks DHCP snooping
VLAN	<ul style="list-style-type: none"> 4K VLANs Access port Trunk port Hybrid port Management VLAN Voice VLAN
QoS	<ul style="list-style-type: none"> Strict priority (SP) + WRR Eight queues on each port Queue scheduling based on 802.1p or DSCP
STP	<ul style="list-style-type: none"> STP (IEEE 802.1d) RSTP (IEEE 802.1w) MSTP (IEEE 802.1s)
Multicast	<ul style="list-style-type: none"> IGMP snooping and a maximum of 1K multicast groups Fast leave mechanism for users
Routing feature	<ul style="list-style-type: none"> IPv4 and IPv6 static routes
Port aggregation	<ul style="list-style-type: none"> 64 link aggregation groups (LAGs) with a maximum of eight ports in each LAG Static LACP
Port mirroring	<ul style="list-style-type: none"> Port-based bidirectional traffic mirroring Configuring mirrored ports as trunk ports
Port bandwidth control	<ul style="list-style-type: none"> Rate limiting for inbound and outbound packet traffic on ports with the minimum rate at 8 kbit/s

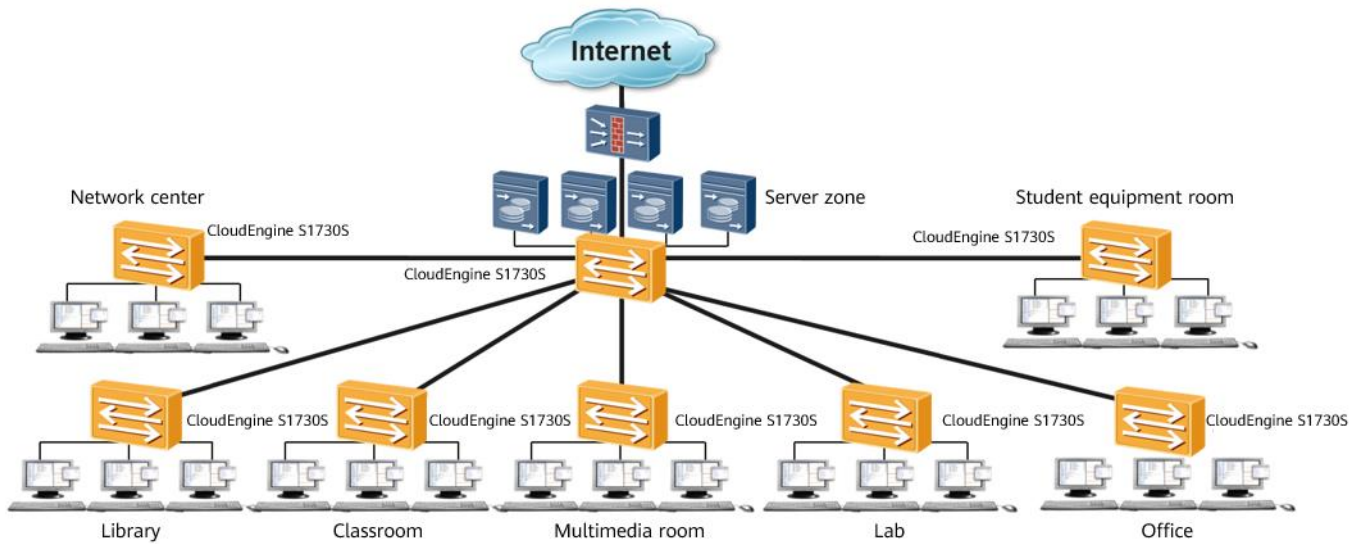
Item	CloudEngine S1730S Fully-Managed Series
Broadcast storm suppression	Port rate-based broadcast storm suppression Sending alarms when the port traffic rate reaches the upper limit of storm suppression
Device management	SNMP Web system (HTTPS) USB-based deployment DHCP client User password protection One-click restoration CLI-based configuration Smart upgrade
Device maintenance	Remote network monitoring (RMON) Syslog Ping detection Port mirroring Line loopback monitoring VCT LLDP NTP

Networking and Applications

Hotel Scenario



Campus Network Scenario



Ordering Information

The following table lists the ordering information of CloudEngine S1730S series switches:

Product Model	Description
CloudEngine S1730S-H24T4S-A	CloudEngine S1730S-H24T4S-A (24 x 10/100/1000BASE-T ports, 4 x GE SFP ports, AC power supply)
CloudEngine S1730S-H48T4S-A	CloudEngine S1730S-H48T4S-A (48 x 10/100/1000BASE-T ports, 4 x GE SFP ports, AC power supply)
CloudEngine S1730S-S8T4S-A1	CloudEngine S1730S-S8T4S-A1 (8 x 10/100/1000BASE-T ports, 4 x GE SFP ports, AC power supply)
CloudEngine S1730S-S8P4S-A1	CloudEngine S1730S-S8P4S-A1 (8 x 10/100/1000BASE-T ports, 4 x GE SFP ports, PoE+, AC power supply)
CloudEngine S1730S-S24T4S-A1	CloudEngine S1730S-S24T4S-A1 (24 x 10/100/1000BASE-T ports, 4 x GE SFP ports, AC power supply)
CloudEngine S1730S-S24P4S-A1	CloudEngine S1730S-S24P4S-A1 (24 x 10/100/1000BASE-T ports, 4 x GE SFP ports, PoE+, AC power supply)
CloudEngine S1730S-S24T4X-A1	CloudEngine S1730S-S24T4X-A1 (24 x 10/100/1000BASE-T ports, 4 x 10GE SFP+ ports, AC power supply)
CloudEngine S1730S-S48T4S-A1	CloudEngine S1730S-S48T4S-A1 (48 x 10/100/1000BASE-T ports, 4 x GE SFP ports, AC power supply)
CloudEngine S1730S-S48P4S-A1	CloudEngine S1730S-S48P4S-A1 (48 x 10/100/1000BASE-T ports, 4 x GE SFP ports, PoE+, AC power supply)
CloudEngine S1730S-S48T4X-A1	CloudEngine S1730S-S48T4X-A1 (48 x 10/100/1000BASE-T ports, 4 x 10GE SFP+ ports, AC power supply)
CloudEngine S1730S-S24T4S-A	CloudEngine S1730S-S24T4S-A (24 x 10/100/1000BASE-T ports, 4 x GE SFP ports, AC power supply)
CloudEngine S1730S-S24P4S-A	CloudEngine S1730S-S24P4S-A (24 x 10/100/1000BASE-T ports, 4 x GE SFP ports, PoE+, AC power supply)

Product Model	Description
CloudEngine S1730S-S24T4X-A	CloudEngine S1730S-S24T4X-A (24 x 10/100/1000BASE-T ports, 4 x 10GE SFP+ ports, AC power supply)
CloudEngine S1730S-S48T4S-A	CloudEngine S1730S-S48T4S-A (48 x 10/100/1000BASE-T ports, 4 x GE SFP ports, AC power supply)
CloudEngine S1730S-S48P4S-A	CloudEngine S1730S-S48P4S-A (48 x 10/100/1000BASE-T ports, 4 x GE SFP ports, PoE+, 1 x 1000 W power module)
CloudEngine S1730S-L4P4T-A	CloudEngine S1730S-L4P4T-A (8 x 10/100/1000BASE-T ports, 4 of which are PoE+ ports, AC power supply)
CloudEngine S1730S-L8T-A	CloudEngine S1730S-L8T-A (8 x 10/100/1000BASE-T ports, standard AC adapter)
CloudEngine S1730S-L8P-A	CloudEngine S1730S-L8P-A (8 x 10/100/1000BASE-T ports, PoE+, AC power supply)
CloudEngine S1730S-L16T-A	CloudEngine S1730S-L16T-A (16 x 10/100/1000BASE-T ports, AC power supply)
CloudEngine S1730S-L16P-A	CloudEngine S1730S-L16P-A (16 x 10/100/1000BASE-T ports, PoE+, AC power supply)
CloudEngine S1730S-L24T-A	CloudEngine S1730S-L24T-A (24 x 10/100/1000BASE-T ports, AC power supply)
CloudEngine S1730S-L24P-A	CloudEngine S1730S-L24P-A (24 x 10/100/1000BASE-T ports, PoE+, AC power supply)
CloudEngine S1730S-L24TR-A	CloudEngine S1730S-L24TR-A (24 x 10/100/1000BASE-T ports, AC power supply)
CloudEngine S1730S-L4P1T-BUA	CloudEngine S1730S-L4P1T-BUA (4 x 10/100/1000BASE-T ports, PoE+, 1 x 10/100/1000BASE-T port, AC adapter)
CloudEngine S1730S-L8P2T-BUA	CloudEngine S1730S-L8P2T-BUA (8 x 10/100/1000BASE-T ports, PoE+, 2 x 10/100/1000BASE-T ports, AC adapter)
CloudEngine S1730S-L8LP2T-BUA	CloudEngine S1730S-L8LP2T-BUA (8 x 10/100/1000BASE-T ports, PoE+, 2 x 10/100/1000BASE-T ports, AC adapter)

More Information

For more information about Huawei switches, visit <https://e.huawei.com/en/> or contact Huawei's local sales office.


Alternatively, you can contact us by using one of the following methods:

- Global branches: <http://e.huawei.com/en/service-hotline>
- Enterprise technical support website: <https://support.huawei.com/enterprise/en/index.html>
- Email: support_e@huawei.com

Copyright © Huawei Technologies Co., Ltd. 2022. All rights reserved.

No part of this document may be reproduced or transferred in any form or by any means without prior written consent of Huawei Technologies Co., Ltd.

Trademarks and Permissions

 HUAWEI and other Huawei trademarks are trademarks of Huawei Technologies Co., Ltd.

All other trademarks or registered trademarks mentioned in this document are the property of their respective holders.

Notice

The purchased products, services, and features are stipulated by the contract made between Huawei and the customer. All or part of the products, services, and features described in this document may not be within the purchase scope or the usage scope. Unless otherwise specified in the contract, all statements, information, and recommendations in this document are provided "AS IS" without warranties, guarantees or representations of any kind, either express or implied. The information in this document is subject to change due to version upgrade or other reasons. Every effort has been made

Huawei Technologies Co., Ltd.

Address: Huawei Industrial Base, Bantian, Longgang, Shenzhen 518129, People's Republic of China
Post code: 518129
Website: <https://e.huawei.com/en/>

in the preparation of this document to ensure accuracy of the contents. But all statements, information, and recommendations in this document do not constitute a warranty of any kind, expressed or implied.