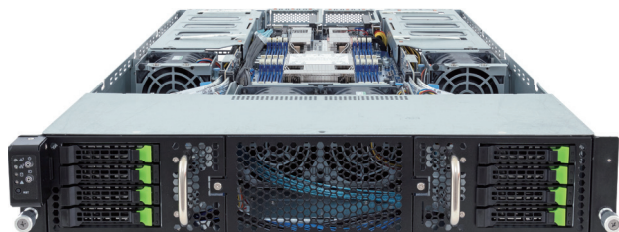


G293-S46-AAM1

HPC/AI Server - 2U DP 4 x PCIe Gen5 GPUs



Features

- Supports up to 4 x Dual slot Gen5 GPU cards
- 4th/5th Gen Intel® Xeon® Scalable Processors
- Intel® Xeon® CPU Max Series
- Dual processor, LGA 4677
- 8-Channel RDIMM DDR5 per processor, 16 x DIMMs
- Dual ROM Architecture
- 2 x 10Gb/s BASE-T LAN ports
- 1 x Dedicated management port
- 8 x 2.5" Gen5 NVMe/SATA/SAS hot-swappable bays
- 4 x FHFL PCIe Gen5 x16 slots for GPUs
- 2 x LP PCIe Gen5 x16 slots for add-on cards
- Dual 2200W 80 PLUS Titanium redundant power supply

Specification

Dimensions	2U (W448 x H87.5 x D800 mm)	Backplane I/O	PCIe Gen5 x4 or SATA 6Gb/s or SAS 12Gb/s
Motherboard	MS43-G21	TPM	1 x TPM header with SPI interface (Optional TPM2.0 kit: CTM010)
CPU	5th Generation Intel® Xeon® Scalable Processors 4th Generation Intel® Xeon® Scalable Processors Intel® Xeon® CPU Max Series Dual processor, TDP up to 350W	Power Supply	Dual 2200W 80 PLUS Titanium redundant power supply AC Input: 100-240V
Socket	2 x LGA 4677 (Socket E)	System Management	Aspeed® AST2600 management controller GIGABYTE Management Console (AMI MegaRAC SP-X)
Chipset	Intel® C741 Chipset	OS Compatibility	Windows Server 2019 / 2022 RHEL 8.6 / 8.7 / 9.0 / 9.1 / 9.2 / 9.3 (x64) SLES 15 SP4 / SP5 (x64) Ubuntu 22.04 / 22.04.1 / 22.04.2 / 22.04.3 LTS (x64) VMware ESXi 7.0 Update 3o / 8.0 / 8.0 Update 1 / 8.0 Update 2 Citrix Hypervisor 8.2 LTSR CU1
Memory	8-Channel DDR5 memory, 16 x DIMM slots RDIMM modules up to 96GB supported 3DS RDIMM modules up to 256GB supported Memory speed: Up to 5600 MHz	System Fans	4 x 80x80x80mm (16,500rpm)
LAN	2 x 10Gb/s BASE-T LAN ports (Broadcom® BCM57416) Supported NCSI function 1 x 10/100/1000 management LAN	Operating Properties	Operating temperature: 10°C to 35°C Operating humidity: 8-80% (non-condensing) Non-operating temperature: -40°C to 60°C Non-operating humidity: 20%-95% (non-condensing)
Video	Integrated in Aspeed AST2600 2D Video Graphic Adapter with PCIe bus interface 1920x1200@60Hz 32bpp, DDR4 SDRAM	Packaging Content	1 x G293-S46, 2 x CPU heatsinks, 6 x Carrier clips, 1 x L-shape Rail kit
Storage	8 x 2.5" Gen5 NVMe/SATA/SAS hot-swappable bays SAS card is required for SAS devices support	Reference Numbers	Barebone package (4th/5th Gen): 6NG293S46DR000ABM1* Barebone package (4th Gen): 6NG293S46DR000AAM1* - L-shape Rail kit: 25HB2-A86102-K0R - CPU heatsink: 25ST1-35320F-C1R/25ST1-453207-C1R - Power supply: 25EP0-22200A-G1S - C19 power cord 125V/15A (US): 25CP1-018000-Q0R (optional) - C19 power cord 250V/16A (EU): 25CP3-01830H-Q0R (optional) - C19 power cord 125V/15A (JP): 25CPA-01830B-Q0R (optional)
RAID	Intel® SATA RAID 0/1/10/5		
Expansion Slots	4 x FHFL PCIe Gen5 x16 slots for GPUs 2 x LP PCIe Gen5 x16 slots for add-on cards		
Rear I/O	2 x USB 3.2 Gen1, 1 x VGA, 2 x RJ45, 1 x MLAN		



Learn more about GIGABYTE server, visit <https://www.gigacomputing.com>

* All specifications are subject to change without notice. Please visit our website for the latest information.
* Intel, the Intel logo, Xeon, and other Intel marks are trademarks of Intel Corporation or its subsidiaries.
* All other brands, logos and names are property of their respective owners.

© 2024 Giga Computing Technology Co., Ltd. All rights reserved.

Designed by

