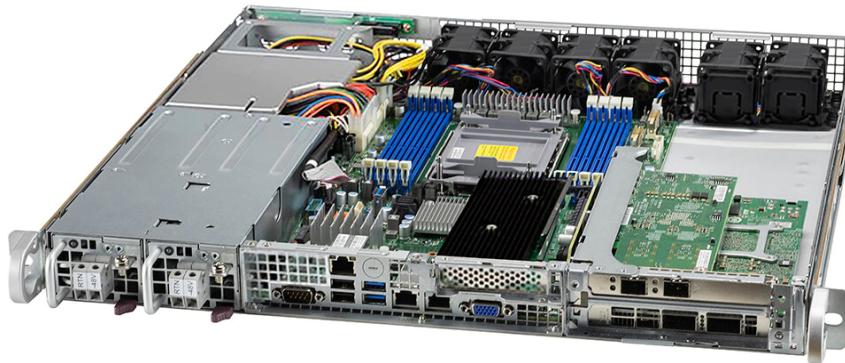


IoT SuperServer SYS-110P-FDWTR

NEW



Key Applications

- Multi-Access Edge Computing
- Outdoor DU of 5G Application
- Flex-RAN, Open-RAN vBBU



Key Features

1. Socket P+ (LGA-4189) support 3rd Gen Intel® Xeon® Scalable processors
2. 8 DIMMs; Up to 2TB 3DS ECC DDR4-3200: RDIMM/LRDIMM
3. 2x 2.5" drive bays; 1 M.2 NVMe OR 1 M.2 SATA3
4. 6 heavy duty fans with optimal fan speed control; 1 Air Shroud(s)
5. 600W Redundant Power Supplies Level (92%+)

Specifications

Chassis

Form Factor ■ 1U

Model ■ **CSE-515B-R601W**

Dimensions and Weight

Height ■ 1.7" (43mm)

Width ■ 17.2" (437mm)

Depth ■ 16.9" (429mm)

Package ■ 8" (H) x 27" (W) x 24" (D)

Weight ■ Gross Weight: 25.2 lbs (11.43 kg)

Available Color ■ No Paint

Front Panel

Buttons ■ Power On/Off
■ UID button

LEDs ■ HDD activity
■ LAN1 activity
■ LAN2 activity
■ Power status
■ System information

Expansion Slots

PCI-Express (PCI-E) ■ Slot 1: 1 PCIe PCI-E 4.0 x16LP
■ Slot 2: 1 PCIe PCI-E 4.0 x16 FHFL
■ Slot 3: 1 PCIe PCI-E 4.0 x16 FHFL

Drive Bays / Storage

Drive Bays ■ 2x 2.5" SATA drive bays

M.2 ■ 1 M.2 NVMe OR 1 M.2 SATA3
■ M-Key, 2280/22110

System Cooling

Fans ■ 6 heavy duty fans with optimal fan speed control

Air Shroud ■ 1 Air Shroud(s)

Power Supply

600W Redundant DC -48V Power Supplies with PMBus

Total Output Power ■ 600W : (-44) - (-65) Vdc

Dimension (W x H x L) ■ 54.5 x 40 x 220 mm

+12V ■ Max: 50A

5V SB ■ Max: 3A / Min: 0A

Certification

[Test Report]

Product SKUs

SYS-110P-FDWTR	<ul style="list-style-type: none"> SuperServer SYS-110P-FDWTR (No Paint)
-----------------------	---

Motherboard

Super X12SPW-TF

Processor

CPU	<ul style="list-style-type: none"> Single Socket P+ (LGA-4189) 3rd Gen Intel® Xeon® Scalable processors Support CPU TDP 85-205W
------------	--

Cores	<ul style="list-style-type: none"> Up to 32C/64T; Up to 48MB Cache
--------------	---

System Memory

Memory	<ul style="list-style-type: none"> Memory Capacity: 8 DIMM slots Memory Type: 3200MHz ECC DDR4 RDIMM/LRDIMM
---------------	---

Memory Voltage	<ul style="list-style-type: none"> 1.2 V
-----------------------	---

Error Detection	<ul style="list-style-type: none"> ECC
------------------------	---

On-Board Devices

SATA	<ul style="list-style-type: none"> SATA3 (6Gbps); RAID 0/1 support
-------------	---

Chipset	<ul style="list-style-type: none"> Intel® C621A
----------------	--

Network Connectivity	<ul style="list-style-type: none"> 2x 10GbE BaseT port(s)
-----------------------------	--

IPMI	<ul style="list-style-type: none"> Support for Intelligent Platform Management Interface v.2.0 IPMI 2.0 with virtual media over LAN and KVM-over-LAN support
-------------	--

Input / Output

Video	<ul style="list-style-type: none"> 1 VGA port(s)
--------------	---

Management

Software	<ul style="list-style-type: none"> IPMI 2.0
-----------------	--

Power Configurations	<ul style="list-style-type: none"> ACPI Power Management Power-on mode for AC power recovery
-----------------------------	--

PC Health Monitoring

CPU	<ul style="list-style-type: none"> Monitors for CPU Cores, Chipset Voltages, Memory
------------	--

FAN	<ul style="list-style-type: none"> Fans with tachometer monitoring Pulse Width Modulated (PWM) fan connectors Status monitor for speed control
------------	---

Temperature	<ul style="list-style-type: none"> CPU thermal trip support, PEPI Monitoring for CPU and chassis environment
--------------------	--

Operating Environment

Environmental Spec.	<ul style="list-style-type: none"> Operating Temperature: 0°C ~ 40°C (32°F ~ 104°F) Non-operating Temperature: -40°C to 70°C (-40°F to 158°F) Operating Relative Humidity: 8% to 90% (non-condensing) Non-operating Relative Humidity: 5% to 95% (non-condensing)
----------------------------	---

Parts List

Parts List - (Items Included)

	Part Number	Qty	Description
Motherboard / Chassis	MBD-X12SPW-TF	1	Super X12SPW-TF Motherboard
	CSE-515B-R601W	1	1U Chassis
Cable 1	CBL-0082L	1	Y SPLIT SATA POWER ADAPTER, PB FREE
Cable 2	CBL-0483L	2	29CM 30AWG SATA S/S CBL
Cable 3	CBL-PWCD-0974	2	48VDC input power cable, 2M, 12AWG, 3 wires, RoHS/REACH,RoHS
FAN 1	FAN-0167L4	2	40x40x56 mm, 20.5K-17.6K RPM, Counter-rotating Fan for SC947 SBB and 1U Twin Pro Series Servers
Riser Card	RSC-W-66G4	1	1U LHS WIO Riser card with two PCI-E 4.0 x16 slots,HF,RoHS
Riser Card	RSC-WR-6	1	1U RHS WIO Riser card with one PCI-E 4.0 x16 slot,HF,RoHS
Software	SFT-OOB-LIC	1	License key for enabling OOB BIOS management
Heatsink / Retention	SNK-P0077P	1	1U Passive CPU Heat Sink for X12 Generation Intel Whitley and Cedar Island Platforms
Heatsink / Retention	SNK-P0077V	1	X12 ICX/CPX CPU Heatsink (78x113x25.5mm), VC Base, Cu Fin
*Power Supply	PWS-601S-1R	2	1U 600W Redundant DC48V input w/PMBus power supply, W54.5xH4
*Power Distributor	PDB-PT514-2824	1	1U redundant power distributor board for SC514, SC113 etc., (rename from PDB-PT514-1824),RoHS/REACH

Notes:

1. Parts with * are inside the chassis
2. Excessive parts might not be shipped, including but not limited to excessive drive trays, fans, riser brackets, air shrouds, IO shields, cables.....etc.

Optional Parts List

	Part Number	Qty	Description
TPM security module	<u>AOM-TPM-9671V</u>	-	SPI capable TPM 1.2 with Infineon 9670 controller with vertical form factor
	<u>AOM-TPM-9670V</u>	-	SPI capable TPM 2.0 with Infineon 9670 controller with vertical form factor