

FusionServer

# 5885H V6 Server



# FusionServer

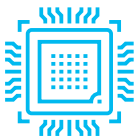
## 5885H V6 Server



5885H V6

| Deliver Excellent Performance and Scalability to Enable Fast and Stable Mission-Critical Services|

FusionServer 5885H V6 is a 4U, 4-socket rack server designed for critical business applications with high reliability and performance requirements, as well as compute-intensive workloads such as virtualization, high-performance computing (HPC), and databases. It supports up to four Intel® Xeon® Scalable processors and 48 DDR4 DIMMs. FusionServer 5885H V6 incorporates patented technologies such as Dynamic Energy Management Technology (DEMT) and fault diagnosis management (FDM), and can be optionally equipped with FusionDirector, a full-lifecycle management software, to effectively reduce operating expense (OPEX) and enhance return on investment (ROI).



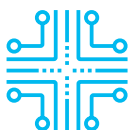
### High Efficiency, Stability, and Scalability

- Supports 4 x Intel® Xeon® Scalable processors in a 4U space. Its Ultra Path Interconnect (UPI) bus supports a speed of up to 10.4 GT/s, and a single CPU supports a maximum of 28 x computing cores. The server supports Intel® Turbo Boost, hyper-threading, and Advanced Vector Extensions (AVX-512).
- Provides 48 x DDR4 DIMMs with a memory capacity of up to 6 TB (configured with 128 GB DIMMs), meeting the requirements of large-capacity memory applications.
- Adopts 24 x Intel® Optane™ persistent memory (Optane™ PMem) modules (200 series) as volatile or non-volatile storage, which can be used together with 24 x DDR4 DIMMs. The server offers a memory capacity of up to 18 TB (configured with 256 GB DDR4 DIMMs and 512 GB PMem DIMMs) to meet various workload requirements.
- Supports 19 x PCIe slots, providing excellent scalability.
- Supports the Boot Speedup Storage Technology (BSST). The OS is installed on two M.2 SSDs, which is deployed separately from service data. The M.2 SSDs are hot swappable and support hardware RAID.



### Smart Power Saving and Optimized Energy Efficiency

- Adopts patented DEMT, driving down overall equipment power consumption by up to 15% without compromising workload performance through multiple power-saving measures such as component hibernation, proportional-integral-derivative (PID) algorithm based fan speed tuning, and active-standby power supplies.
- Uses 80 PLUS® Platinum/Titanium PSUs that provide a conversion efficiency of up to 96%.
- Supports 900 W, 1200 W, 1500 W, 2000 W PSU options, adapting flexibly to different power requirements. The 1200 W and 1500 W PSUs use DC and HVDC technologies, improving energy efficiency.



### Intelligent Management and Open Integration

- Integrates FusionDirector for intelligent full-lifecycle O&M, improving O&M efficiency by 30% with the following intelligent technologies:
  - » Intelligent maintenance: integrates pre-diagnosis and recovery, and accurately manages key components. The fault diagnosis accuracy reaches 93% and the breakdown rate decreases by 50%.
  - » Intelligent upgrading: enables one-click automation, cloud-based collaboration for quick policy formulation, and automatic firmware version matching and upgrading in batches, improving efficiency by 20x.
  - » Intelligent discovery: enables 100% accuracy of component-level visualization, automatic asset inventorying in seconds, and real-time track tracing.
  - » Intelligent energy saving: enables refined dynamic energy management. DEMT helps save 15% of the system energy.
  - » Intelligent deployment: enables pipelined deployment, improving deployment efficiency by 10x.
- Provides standardized open interfaces and development guides, facilitating seamless integration with third-party management software.

# FusionServer

## 5885H V6 Server

Form Factor	4U rack server
Processors	2 or 4 x 3rd Gen Intel® Xeon® Scalable processors (5300/6300/8300 series) with TDP up to 250 W
Chipset	Intel C621A
Memory	48 x DDR4 DIMMs, up to 3200 MT/s; up to 24 x Intel® Optane™ PMem DIMMs (200 Series), 2666 MT/s
Local Storage	<p>Supports hot-swappable drives with the following configuration options:</p> <ul style="list-style-type: none"> <li>• 8 x 2.5" front SAS/SATA drives</li> <li>• 24 x 2.5" front SAS/SATA drives</li> <li>• 25 x 2.5" front SAS/SATA drives</li> </ul> <p>Flash storage:</p> <ul style="list-style-type: none"> <li>• 2 x M.2 SSDs</li> </ul>
RAID	RAID 0, 1, 5, 50, 6, or 60; optional supercapacitor for cache data power failure protection, RAID level migration, drive roaming, self-diagnosis, and remote web-based configuration.
PCIe Expansion	Up to 19 x PCIe 3.0 slots, including one dedicated PCIe slot for the OCP 3.0 NIC
GPU Cards	4 x FHFL dual-slot GPU heterogeneous accelerators or 8 x FHHL single-slot GPU accelerators
Fan Modules	Provides 5 x hot-swappable counter-rotating fan modules in N+1 redundancy.
Power Supply	<p>4 x hot-swappable PSUs in 2+2 redundancy mode. Supported options include:</p> <ul style="list-style-type: none"> <li>• 900 W AC PSUs (input: 100 V to 240 V AC, or 192 V to 288 V DC)</li> <li>• 1200 W AC PSUs (Input: 220 V to 240 V AC or 200 V to 288 V DC)</li> <li>• 1500 W AC PSUs (Input: 220 V to 240 V AC or 200 V to 288 V DC)</li> <li>• 2000 W AC PSUs (Input: 220 V to 240 V AC or 200 V to 288 V DC)</li> </ul>
Management	<p>The iBMC chip integrates one dedicated GE management port to provide comprehensive management functions such as fault diagnosis, automated O&amp;M, and hardware security hardening.</p> <ul style="list-style-type: none"> <li>• The iBMC supports standard interfaces such as Redfish, SNMP, and IPMI 2.0; provides a remote management user interface based on HTML5/VNC KVM; supports CD-free deployment and Agentless for smart and simplified management.</li> <li>• (Optional) Configured with the FusionDirector management software to provide advanced management functions such as stateless computing, batch OS deployment, and automated firmware upgrade, enabling automatic management throughout the lifecycle.</li> </ul>
OS	Microsoft Windows Server, Red Hat Enterprise Linux, SUSE Linux Enterprise Server, CentOS, Citrix XenServer, and VMware ESXi. For details, visit <a href="https://www.xfusion.com">https://www.xfusion.com</a> .
Security	Power-on password, administrator password, Trusted Platform Module (TPM) 2.0, and security panel
Operating Temperature	5°C to 45°C (41°F to 113°F), compliant with ASHRAE A1/A2/A3/A4
Certification	CE, UL, FCC, CCC, and RoHS
Installation Suite	L-shaped guide rails, adjustable guide rails, and holding rails
Dimensions (H x W x D)	175 mm x 447 mm x 798 mm (6.89 in. x 17.60 in. x 31.10 in.)

**xFusion Digital Technologies Co., Ltd.**

**Consulting telephone:** 400-080-6888    **Technical hotline:** 400-009-8999

**Address:** 9th Floor, Building 1, Zensun Boya Square, Longzihu Wisdom Island, Zhengdong New District, Zhengzhou, Henan Province

**Website:** [www.xfusion.com](http://www.xfusion.com)

**Copyrights © xFusion Digital Technologies Co., Ltd 2023. All rights reserved.**

No part of this document may be reproduced or transmitted in any form or by any means without prior written consent of xFusion Digital Technologies Co., Ltd.

#### **Trademarks and Permissions**

**XFUSION** and other xFusion trademarks are trademarks of xFusion Digital Technologies Co., Ltd. All other trademarks and trade names mentioned in this document are the property of their respective holders.

#### **Notice**

In this document, "xFusion" is used to refer to "xFusion Digital Technologies Co., Ltd." for concise description and easy understanding, which does not mean that "xFusion" may have any other meaning. Any "xFusion" mentioned or described hereof may not be understood as any meaning other than "xFusion Digital Technologies Co., Ltd.", and xFusion Digital Technology Co., Ltd. shall not bear any liability resulting from the use of "xFusion".

The purchased products, services and features are stipulated by the contract made between xFusion and the customer. All or part of the products, services and features described in this document may not be within the purchase scope or the usage scope. Unless otherwise specified in the contract, all statements, information, and recommendations in this document are provided "AS IS" without warranties, guarantees or representations of any kind, either express or implied.

The information in this document is subject to change without notice. Every effort has been made in the preparation of this document to ensure accuracy of the contents, but all statements, information, and recommendations in this document do not constitute a warranty of any kind, express or implied.