

CONTACT INFORMATION

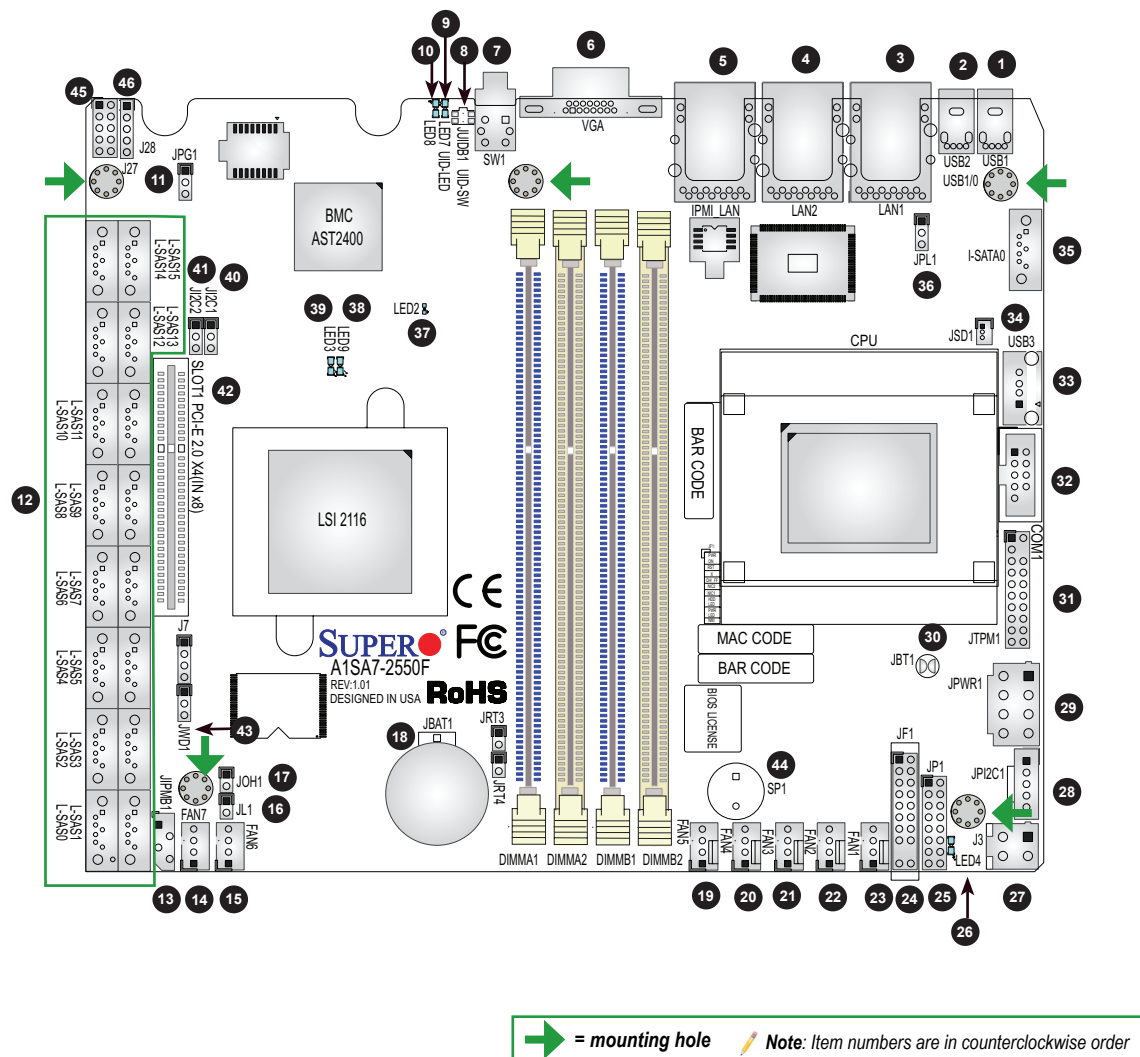
- Website: www.supermicro.com
- General Information: marketing@supermicro.com
- Technical Support: support@supermicro.com
- Phone: +1 (408) 503-8000, Fax: +1 (408) 503-8008

FOR YOUR SYSTEM TO WORK PROPERLY, PLEASE DOWNLOAD APPROPRIATE

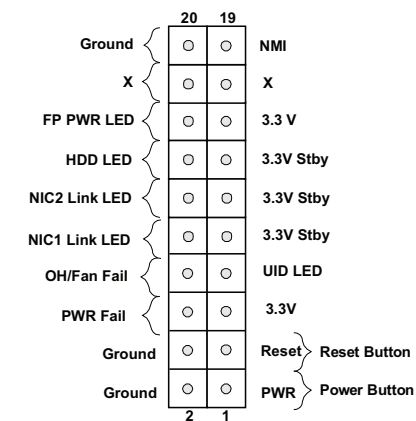
DRIVERS/IMAGES/USER'S MANUAL FROM THE LINKS BELOW:

- Manuals: <http://www.supermicro.com/support/manuals>
- Drivers & Utilities: <ftp://ftp.supermicro.com/CDR/Images/CDR-A1-UP/>
- Safety: http://www.supermicro.com/about/policies/safety_information.cfm

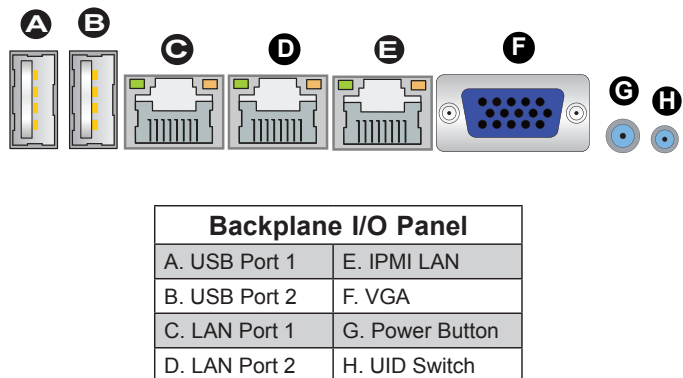
Motherboard Layout and Features



Front Panel Control (JF1)



Back Panel I/O Connectors



Jumpers, Connectors and LED Indicators

Jumpers			
Jumper	Item #	Description	Default
JBT1	30	CMOS Clear	Open: Normal Operation, Short: Clear CMOS
J12C1/J12C2	40, 41	SMB to PCI-Exp. Slots	Off (Disabled)
JPG1	11	VGA Enable	Pins 1-2 (Enabled)
JPL1	36	Ethernet LAN Ports Enable	Pins 1-2 (Enabled)
JWD1	43	Watch Dog Enable	Pins 1-2 (Reset)

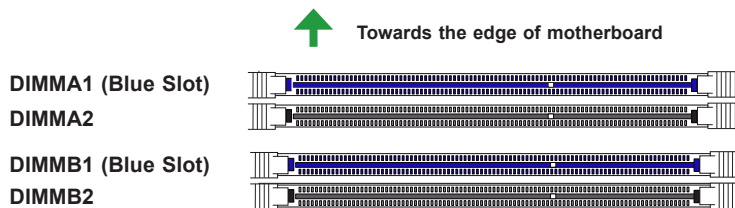
Connectors		
Connector	Item #	Description
Battery (JBAT1)	18	Onboard Battery
COM1	32	COM1 Header
FAN1-FAN7	23, 22, 21, 20, 19, 14, 15	CPU/System Cooling Fans
IPMI_LAN	5	IPMI Dedicated LAN
J3	27	Motherboard 5V Standby Power Input
JF1	24	Front Panel Control Header
JIPMB1	13	4-pin External SMBus I2C Header (for an IPMI Card)
JL1	16	Chassis Intrusion Header
JOH1	17	Overheat/Fan Fail LED Header
JP1	25	HDD Backplane Power Control header
JPI2C1	28	Power Supply System Management Bus (SMBus) I2C Header
JPWR1	29	+12V 8-pin Motherboard Power connector
JSD1	34	SATA DOM (Device_On_Module) Power Connector
JTPM1	31	Trusted Platform Module (TPM)/Port 80 Connector
JUIDB1	8	Unit Identifier (UID) Button
LAN1/LAN2	3, 4	Gigabit Ethernet (RJ45) Ports
L-SAS0 - L-SAS15	12	LSI 2116 SAS Ports 0-15
I-SATA0	35	Intel Serial ATA Port 0
PCI-E Slot	42	PCI-E Slot 2.0 x4 (x8)
SP1	44	Internal Speaker/Buzzer
SW1	7	Power Button
USB1/USB2	1, 2	Backpanel USB 2.0 Ports 1/2
USB 3	33	USB 2.0 Front Access Support/Type A Connector)
VGA	6	Backpanel VGA Port
J27	45	NC-SI header for AOC-STGN-i1SF 10GbE card
J28	46	Power to AOC-STGN-i1SF 10GbE card

LED Indicators				
LED	Item #	Description	Color/State	Status
LED2	37	BMC Heartbeat LED	Green: Blinking	BMC: Normal
LED3	39	LSISAS2116 Heartbeat LED	Green: Blinking	SAS Controller: Normal
LED4	26	Power LED	Green: On	System Power On
LED7	9	UID Switch LED	Blue: On	Unit Identified
LED8	10	Overheat/PWR Fail/Fan Fail LED	Red: Solid on/Blinking	Solid On: Overheat, Blinking: PWR Fail or Fan Fail
LED9	38	LSISA2116 Error LED	Red: On	LSISAS2116 Error Status

Memory Support

The A1SA7-2750/2550F motherboard supports up to 64GB of DDR3 ECC or Non-ECC Unbuffered (UDIMM) 1600/1333 MHz in x8 data width only, in 4 memory slots. Populating these DIMM modules with a pair of memory modules of the same type and same size will result in better memory performance.

DIMM Memory Installation

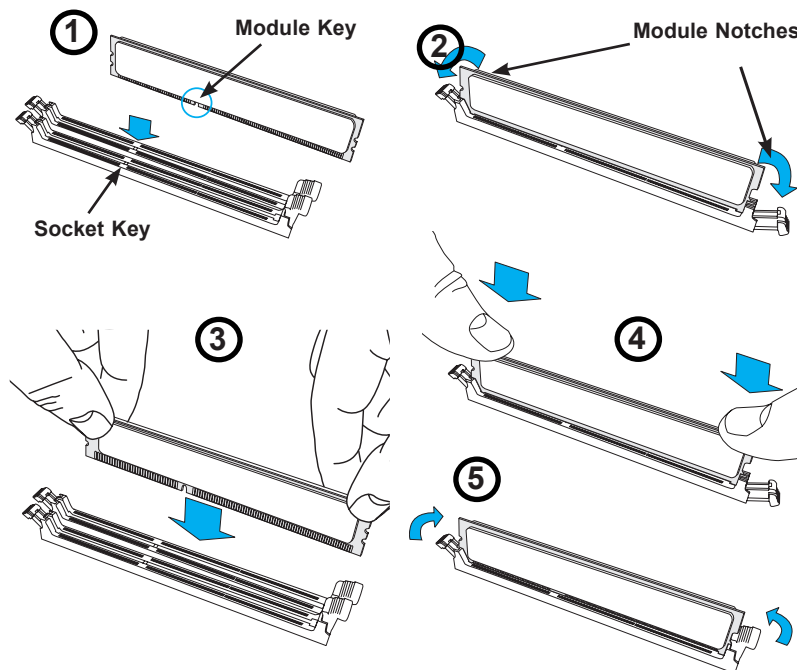


Memory Population Guidelines

When installing memory modules, the DIMM slots should be populated in the following order: DIMMA1, DIMMB1, then DIMMA2, DIMMB2.

- Always use DDR3 DIMM modules of the same size, type and speed.
- The motherboard will support one DIMM module or three DIMM modules installed. However for best memory performance, install DIMM modules in pairs.
- Be sure to use memory modules of the same type, same speed, and same frequency on the same motherboard. Mixing of memory modules of different types and speeds is not allowed.

Recommended Population (Balanced)				
DIMMA1 Slot	DIMMB1 Slot	DIMMA2 Slot	DIMMB2 Slot	Total System Memory
4GB	4GB			8GB
4GB	4GB	4GB	4GB	16GB
8GB	8GB			16GB
8GB	8GB	8GB	8GB	32GB



Note: Graphics shown in this quick reference guide are for illustration only. Your components may or may not look exactly the same as drawings shown in this guide.

Note: Refer to Chapter 1 of the User Manual for detailed information on jumpers, connectors, and LED indicators.

Note: Refer to Chapter 2 of the User Manual for detailed information on memory support and CPU/motherboard installation instructions.