

# MAIPU

## 2023 CAMPUS WI-FI PRODUCT LINE

Maipu Communication Technology Co., Ltd.

迈普大厦



# AGENDA

C O N T E N T S

CHAPTER 1	MAIPU WNC6600 SERIES ACCESS CONTROLLER
CHAPTER 2	MAIPU WA2600 SERIES ACCESS POINT
CHAPTER 3	MAIPU CAMPUS WI-FI KEY FEATURES



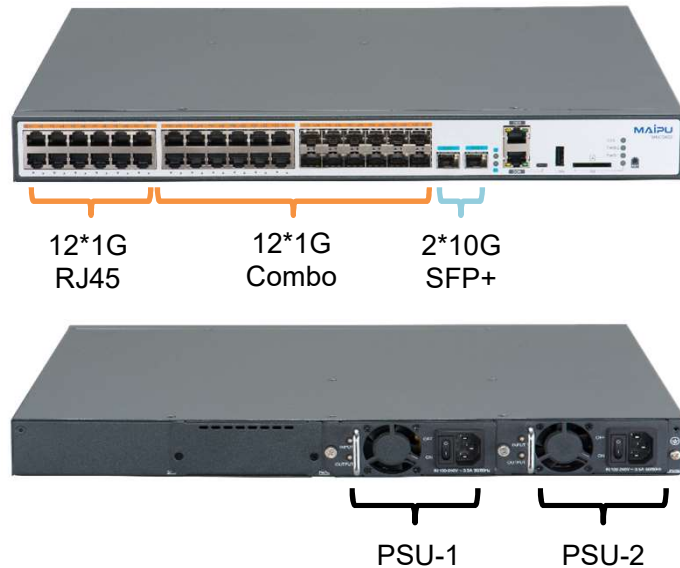
# WNC6600 Series Wireless Access Controller Specification



Product Model	WNC6600-2000-AC	WNC6600-1000-AC	WNC6600-500-AC	WNC6600-200-AC	WNC6600-100-AC
Default AP No.	128	128	64	64	32
Max. AP No.	2048	1024	512	256	128
100/1000M Base-T	12*100/1000M RJ45	12*100/1000M RJ45	12*100/1000M RJ45	8*100/1000M RJ45 (8*PoE Out)	24*100M RJ45 (8*PoE Out)
1G SFP	12*1G Combo(SFP+RJ45)	12*1G Combo(SFP+RJ45)	12*1G Combo(SFP+RJ45)	2*1G SFP	2*1G Combo(SFP+RJ45)
10G SFP+	2*10G SFP+	2*10G SFP+	2*10G SFP+	N/A	N/A
MAC Table	64K	64K	64K	32K	32K
Routing Table	8K	8K	8K	8K	8K
Routing Protocol	Static/RIP/OSPF	Static/RIP/OSPF	Static/RIP/OSPF	Static/RIP/OSPF	Static/RIP/OSPF
USB2.0 Port	1	1	1	1	1
Console Port	1	1	1	1	1
Power Supply	Dual Modular Power	Dual Modular Power	Dual Modular Power	Fixed Single AC	Fixed Single AC
Height	1U	1U	1U	1U	1U

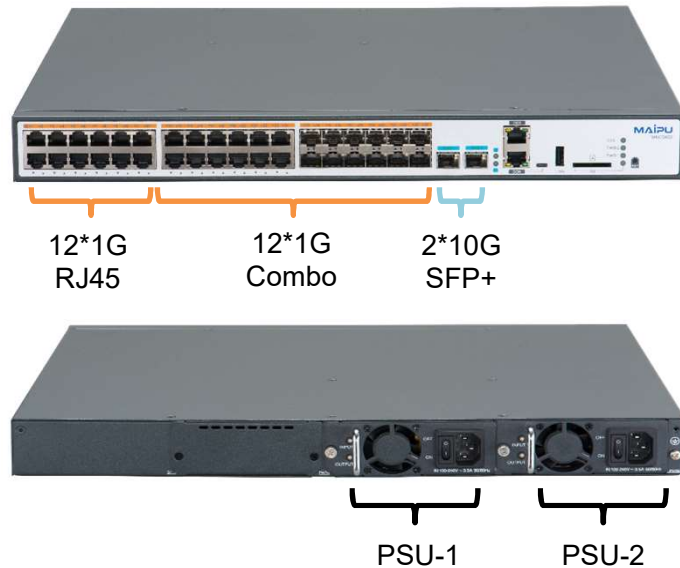


# WNC6600-2000-AC Access Controller



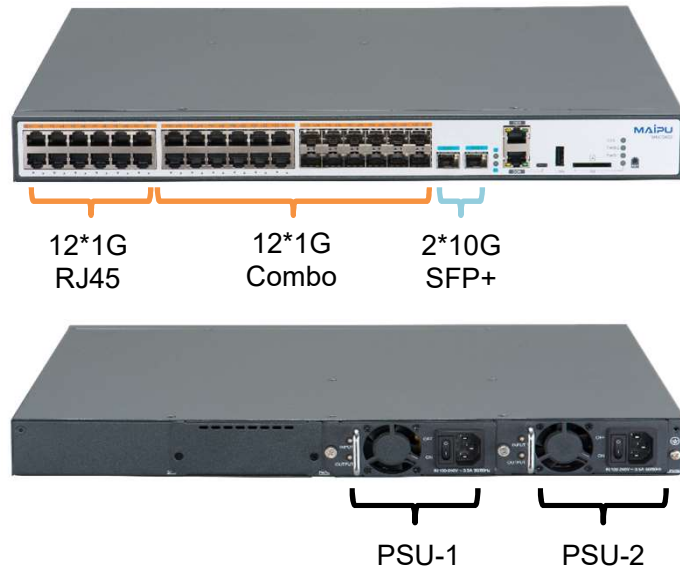
Product Model	WNC6600-2000-AC
Max. AP No.	2048
Default AP No.	128
100/1000M Base-T	12*100/1000M RJ45
1G SFP	12*1G Combo(SFP+RJ45)
10G SFP+	2*10G SFP+
Power Supply	Dual Modular Power
Key Features	CAPWAP
	1+1/1:1 HA
	L2/L3 Roaming
	802.1X/Portal/PSK/OPEN
	RF Management
	User/Traffic Load Balance
	Anti-rogue/SAVI
	WMM/BSS/AP QoS
	Static/RIP/OSPF
	SNMP/CLI/Web

# WNC6600-1000-AC Access Controller



Product Model	WNC6600-1000-AC
Max. AP No.	1024
Default AP No.	128
100/1000M Base-T	12*100/1000M RJ45
1G SFP	12*1G Combo(SFP+RJ45)
10G SFP+	2*10G SFP+
Power Supply	Dual Modular Power
Key Features	CAPWAP
	1+1/1:1 HA
	L2/L3 Roaming
	802.1X/Portal/PSK/OPEN
	RF Management
	User/Traffic Load Balance
	Anti-rogue/SAVI
	WMM/BSS/AP QoS
	Static/RIP/OSPF
SNMP/CLI/Web	

# WNC6600-500-AC Access Controller



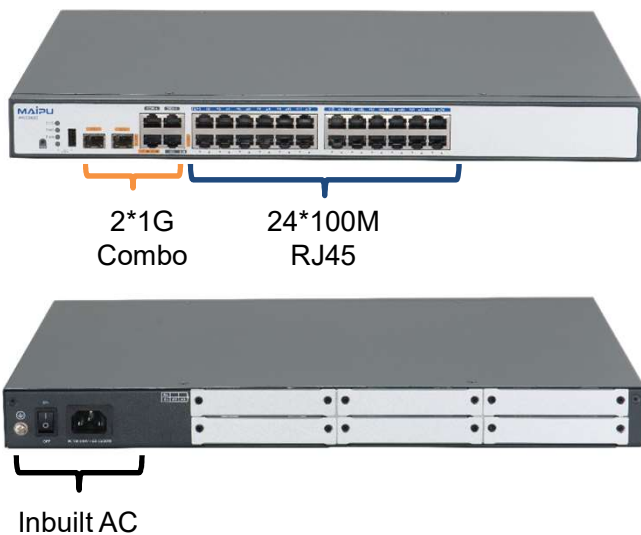
Product Model	WNC6600-500-AC
Max. AP No.	512
Default AP No.	64
100/1000M Base-T	12*100/1000M RJ45
1G SFP	12*1G Combo(SFP+RJ45)
10G SFP+	2*10G SFP+
Power Supply	Dual Modular Power
Key Features	CAPWAP
	1+1/1:1 HA
	L2/L3 Roaming
	802.1X/Portal/PSK/OPEN
	RF Management
	User/Traffic Load Balance
	Anti-rogue/SAVI
	WMM/BSS/AP QoS
	Static/RIP/OSPF
SNMP/CLI/Web	

# WNC6600-200-AC Access Controller



Product Model	WNC6600-200-AC
Max. AP No.	256
Default AP No.	64
100/1000M Base-T	8*100/1000M RJ45 (8*PoE)
1G SFP	2*1G SFP
Power Supply	Fixed One AC
Key Features	CAPWAP
	1+1/1:1 HA
	L2/L3 Roaming
	802.1X/Portal/PSK/OPEN
	RF Management
	User/Traffic Load Balance
	Anti-rogue/SAVI
	WMM/BSS/AP QoS
	Static/RIP/OSPF
	SNMP/CLI/Web

# WNC6600-100-AC Access Controller



Product Model	WNC6600-100-AC
Max. AP No.	128
Default AP No.	32
100M Base-T	24*100M RJ45 (8*PoE)
1G SFP	2*1G Combo(SFP+RJ45)
Power Supply	Fixed One AC
Key Features	CAPWAP
	1+1/1:1 HA
	L2/L3 Roaming
	802.1X/Portal/PSK/OPEN
	RF Management
	User/Traffic Load Balance
	Anti-rogue/SAVI
	WMM/BSS/AP QoS
	Static/RIP/OSPF
	SNMP/CLI/Web



# AGENDA

## CONTENTS

CHAPTER 1	MAIPU WNC6600 SERIES ACCESS CONTROLLER
CHAPTER 2	MAIPU WA2600 SERIES ACCESS POINT
CHAPTER 3	MAIPU CAMPUS WI-FI KEY FEATURES

# WA2600 Series Access Points Family



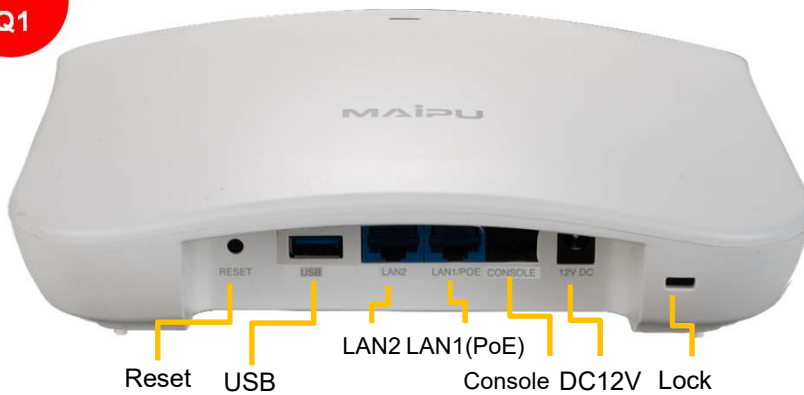
Product Model	WA2600-830-PE	WA2600-825-PE	WA2600-822-PE	WA2600-821-PE	WA2600-815-PE
Chipset	Qualcomm	Qualcomm	Qualcomm	Qualcomm	Qualcomm
Mounting Mode	Ceiling Mount	Wall Mount	Ceiling Mount	Ceiling Mount	Wall Mount
Throughput	5.4Gbps	3Gbps	3Gbps	1.8Gbps	1.8Gbps
Standard	802.11a/b/g/n/ac/ax	802.11a/b/g/n/ac/ax	802.11a/b/g/n/ac/ax	802.11a/b/g/n/ac/ax	802.11a/b/g/n/ac/ax
Wireless Band	Triple Band (2.4G&5.2G&5.8G)	Dual Band (2.4G&5G)	Dual Band (2.4G&5G)	Dual Band (2.4G&5G)	Dual Band (2.4G&5G)
Interfaces	1*2.5G RJ45 (PoE) 1*1G RJ45	1*1G RJ45 (PoE) 4*1G RJ45	1*1G RJ45 (PoE) 1*1G RJ45	1*1G RJ45 (PoE) 1*1G RJ45	1*1G RJ45 (PoE) 4*1G RJ45
MIMO	3:2*2	2:2*2	2:2*2	2:2*2	2:2*2
SSID	16	16	16	16	16
PoE Input	Yes	Yes	Yes	Yes	Yes
12V DC Input	Yes	Yes	Yes	Yes	Yes





# WA2600-830-PTE Wi-Fi6 Ceiling Mount AP

2023  
Q1

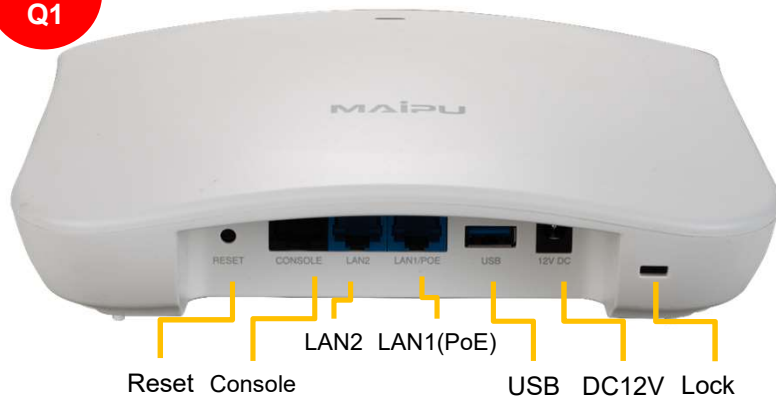


Product Model	WA2600-830-PTE
Throughput	5.4Gbps
Mounting Mode	Ceiling Mount
Standard	802.11a/b/g/n/ac/ax
Wireless Band	Triple Band (2.4G&5.2G&5.8G)
Interfaces	1*2.5G RJ45 (PoE) 1*1G RJ45
MIMO	3:2*2
PoE Standard	802.11af/at
SSID No.	16
Working Mode	FIT



# WA2600-822-PTE Wi-Fi6 Ceiling Mount AP

2023  
Q1



Product Model	WA2600-822-PTE
Throughput	3Gbps
Mounting Mode	Ceiling Mount
Standard	802.11a/b/g/n/ac/ax
Wireless Band	Dual Band (2.4G&5G)
Interfaces	1*1G RJ45 (PoE) 1*1G RJ45
MIMO	2:2*2
PoE Standard	802.11af/at
SSID No.	16
Working Mode	FIT



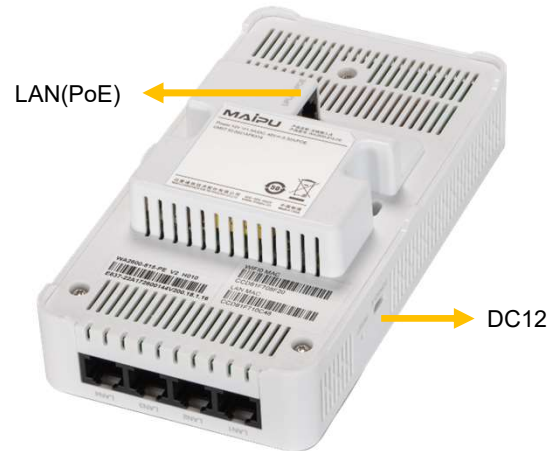


# WA2600-825-PTE Wi-Fi6 Wall Mount AP

2023  
Q1



LAN1-2-3-4

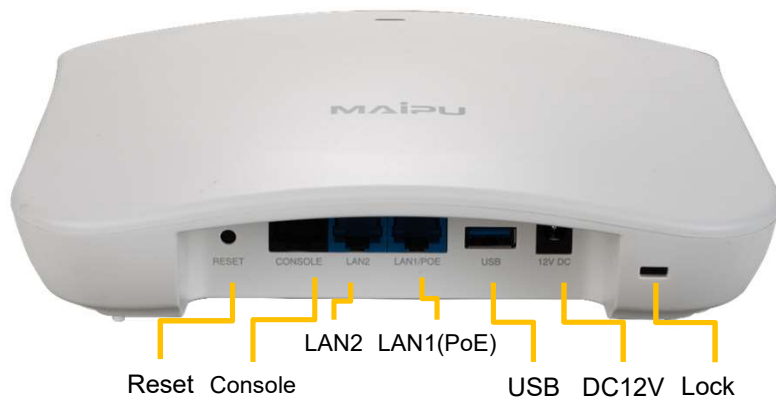


Product Model	WA2600-825-PTE
Throughput	3Gbps
Mounting Mode	Wall Mount
Standard	802.11a/b/g/n/ac/ax
Wireless Band	Dual Band (2.4G&5G)
Interfaces	1*1G RJ45 (PoE) 4*1G RJ45
MIMO	2:2*2
PoE Standard	802.11af/at
SSID No.	16
Working Mode	FIT





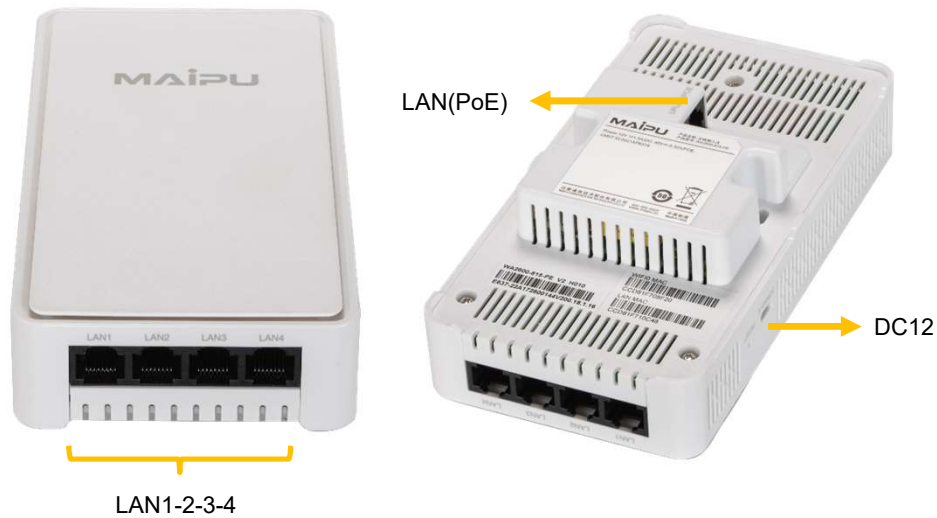
# WA2600-821-PTE Wi-Fi6 Ceiling Mount AP



Product Model	WA2600-821-PTE
Throughput	1.8Gbps
Mounting Mode	Ceiling Mount
Standard	802.11a/b/g/n/ac/ax
Wireless Band	Dual Band (2.4G&5G)
Interfaces	1*1G RJ45 (PoE) 1*1G RJ45
MIMO	2:2*2
PoE Standard	802.11af/at
SSID No.	16
Working Mode	FIT



# WA2600-815-PTE Wi-Fi6 Wall Mount AP



Product Model	WA2600-815-PTE
Throughput	1.8Gbps
Mounting Mode	Ceiling Mount
Standard	802.11a/b/g/n/ac/ax
Wireless Band	Dual Band (2.4G&5G)
Interfaces	1*1G RJ45 (PoE) 4*1G RJ45
MIMO	2:2*2
PoE Standard	802.11af/at
SSID No.	16
Working Mode	FIT

# AGENDA

C O N T E N T S

CHAPTER 1	MAIPU WNC6600 SERIES ACCESS CONTROLLER
CHAPTER 2	MAIPU WA2600 SERIES ACCESS POINT
CHAPTER 3	MAIPU CAMPUS WI-FI KEY FEATURES

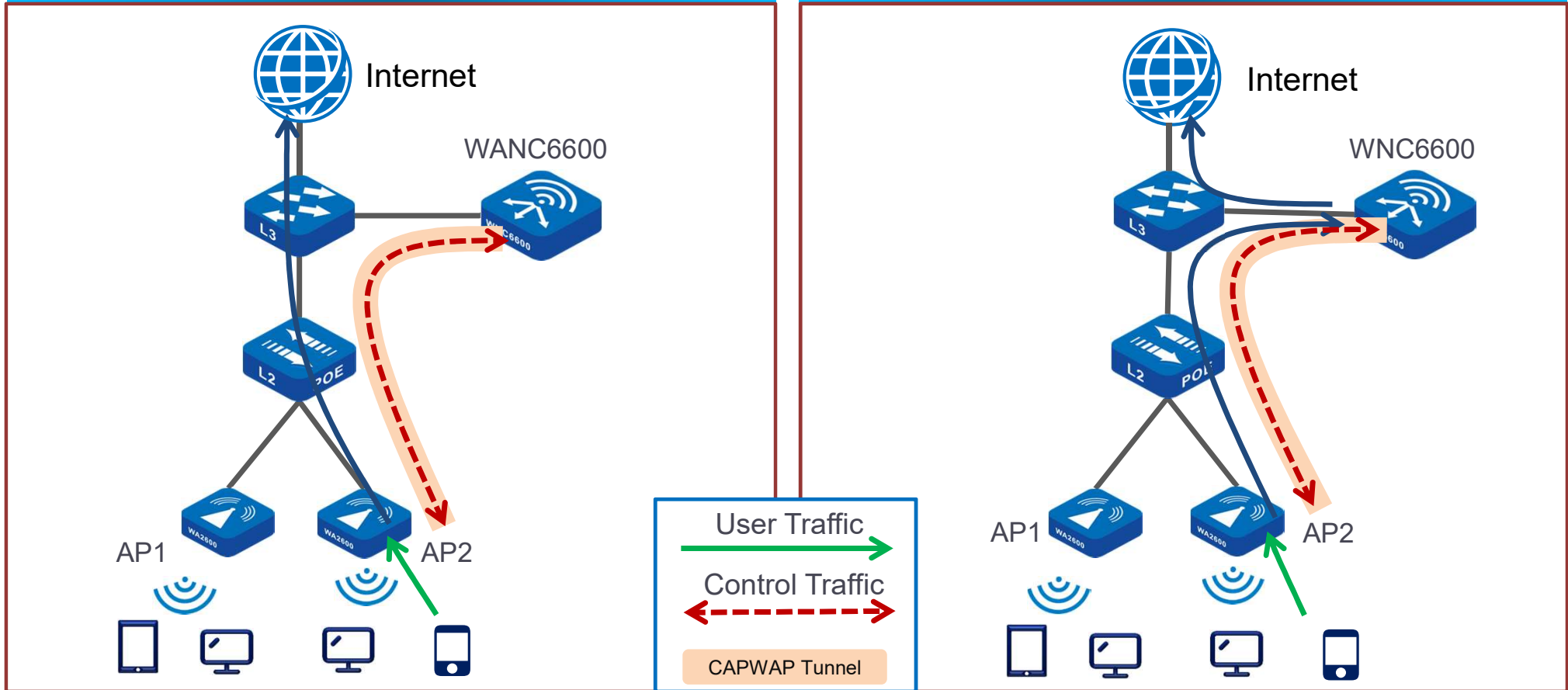




# Key Features – Centralized Forwarding & Local Forwarding

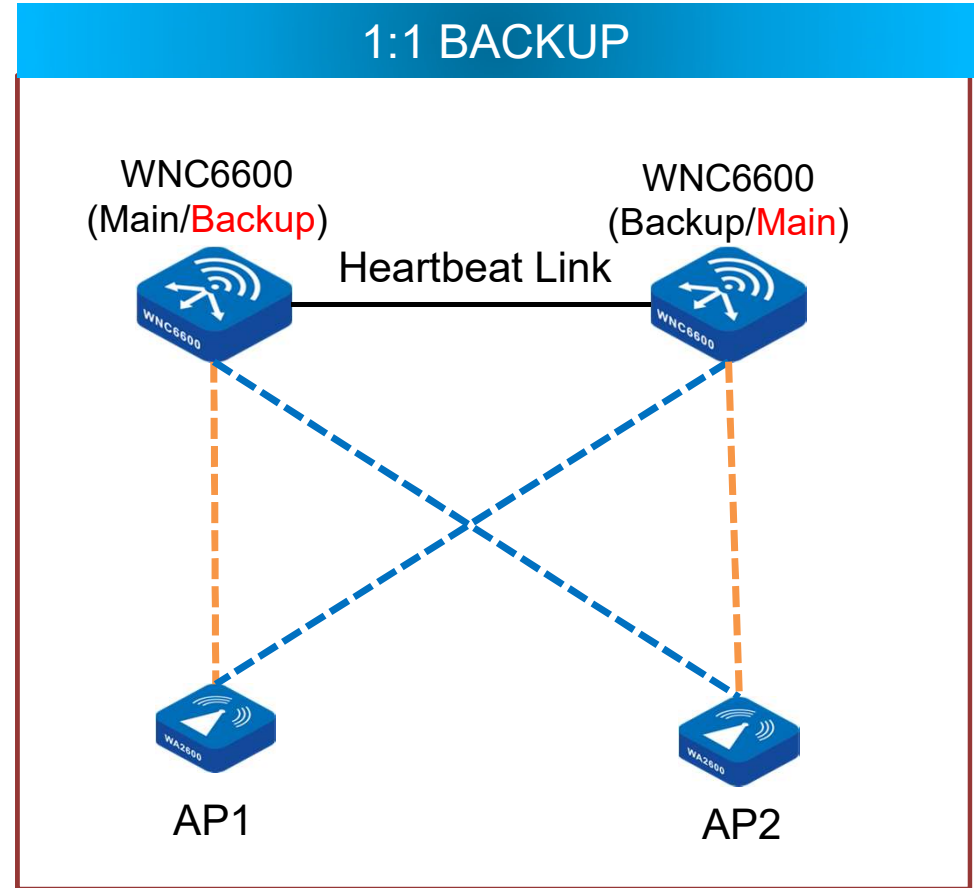
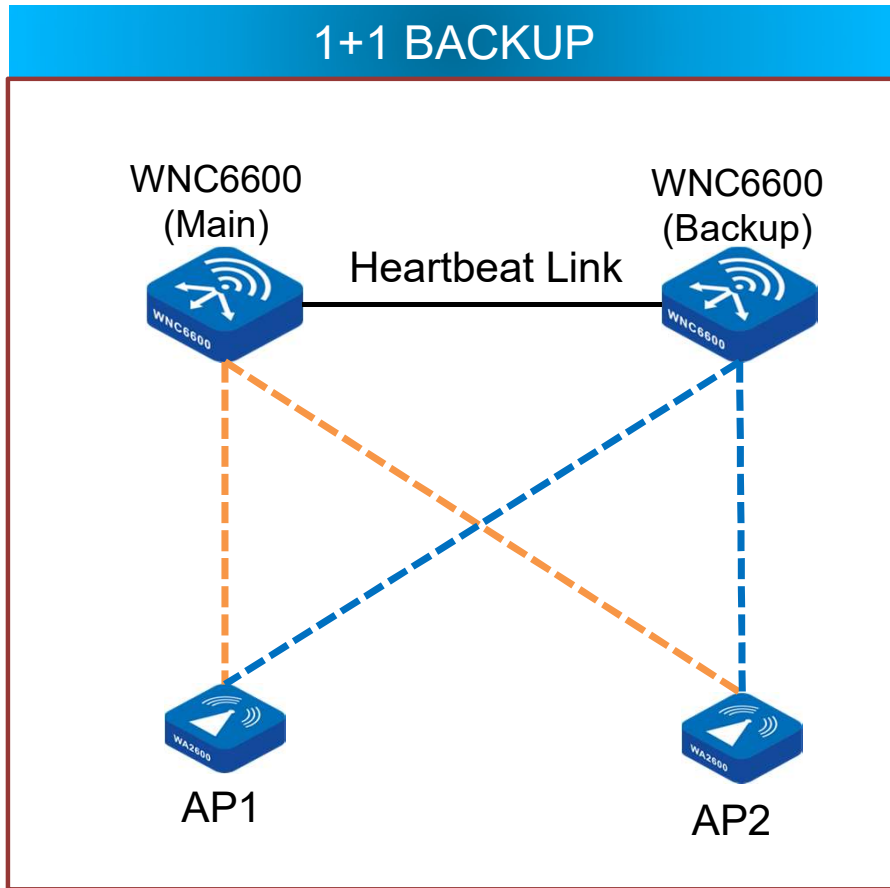
## LOCAL FORWARDING

## CENTRALIZED FORWARDING





# Key Features – Active-Standby Failover

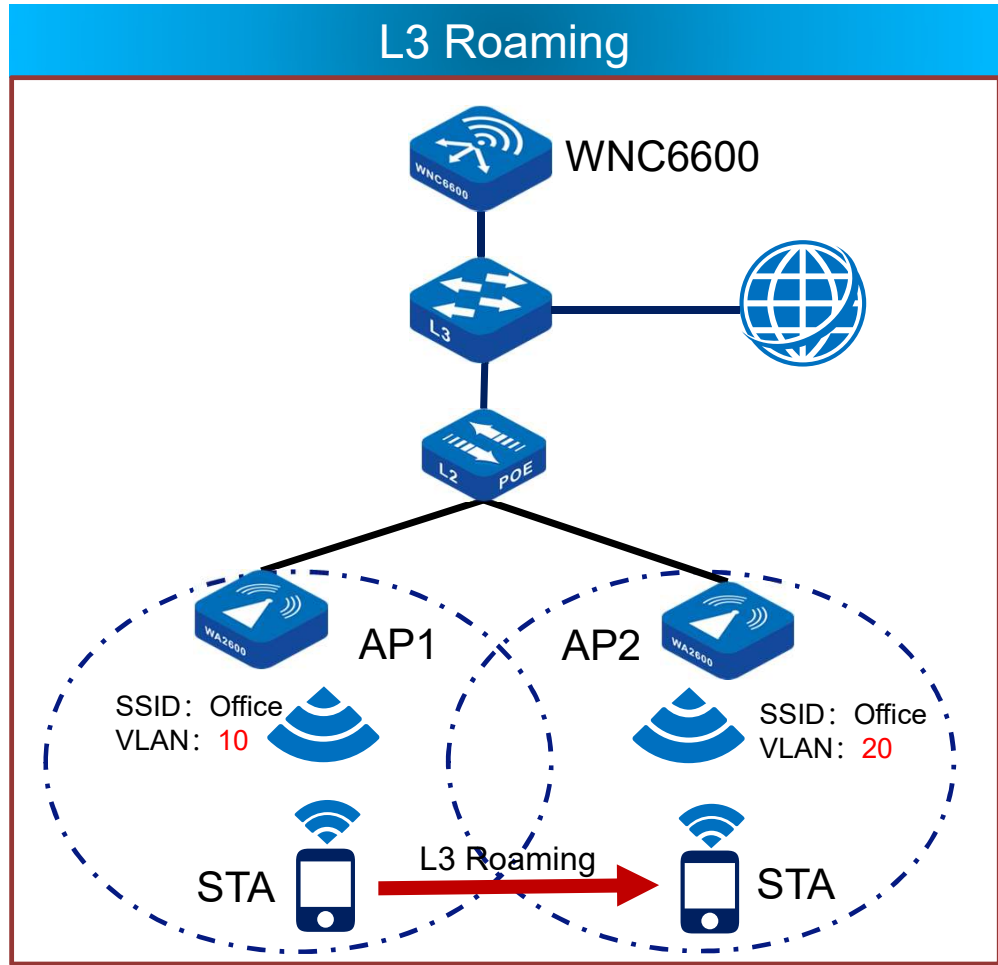
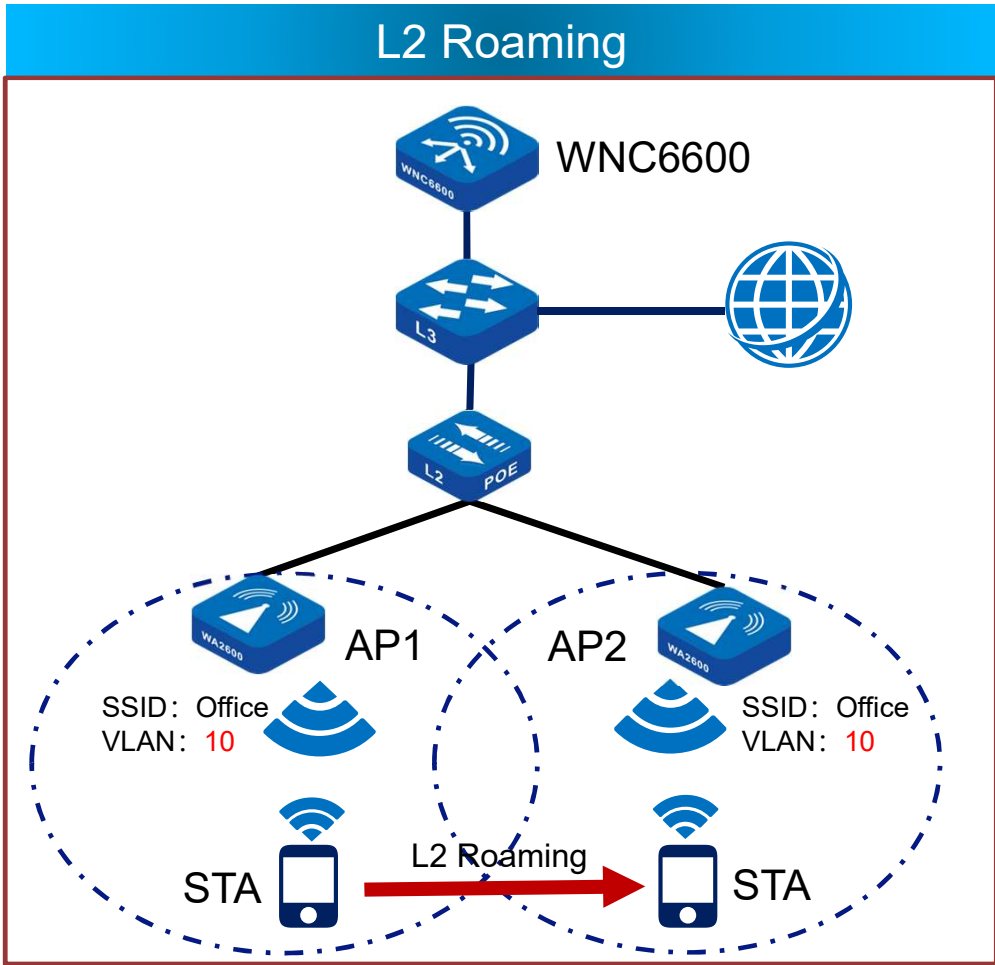


----- Main CAPWAP Tunnel

----- Backup CAPWAP Tunnel

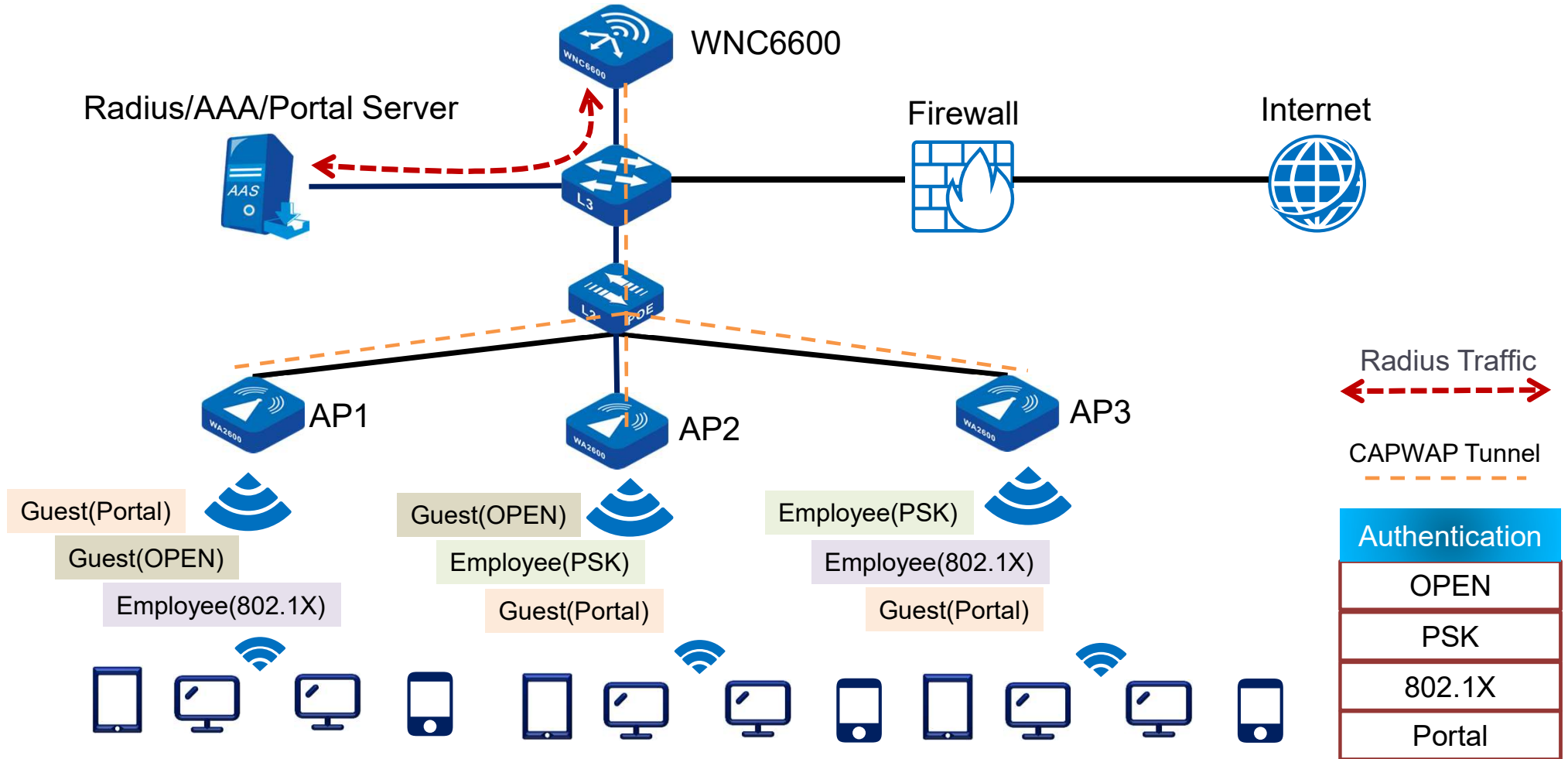


# Key Features – L2/L3 Roaming

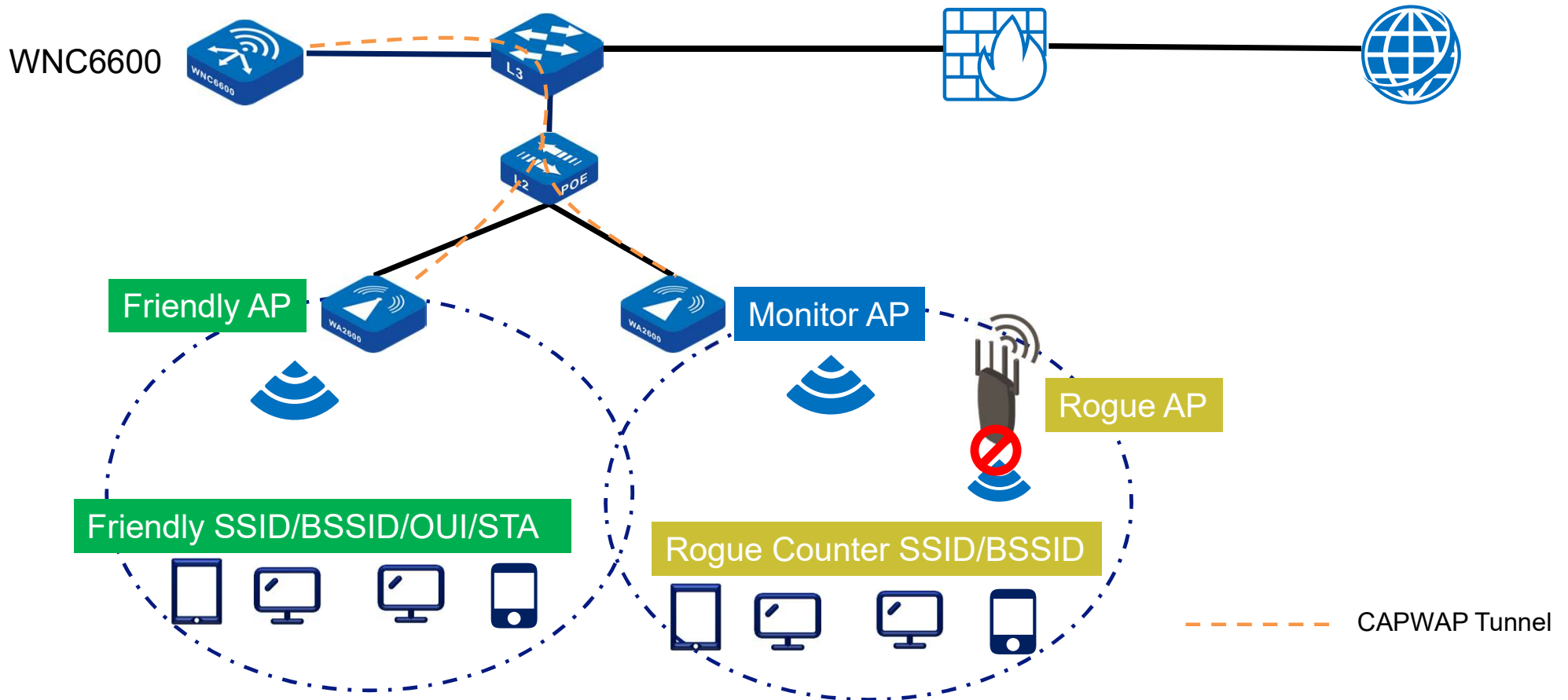




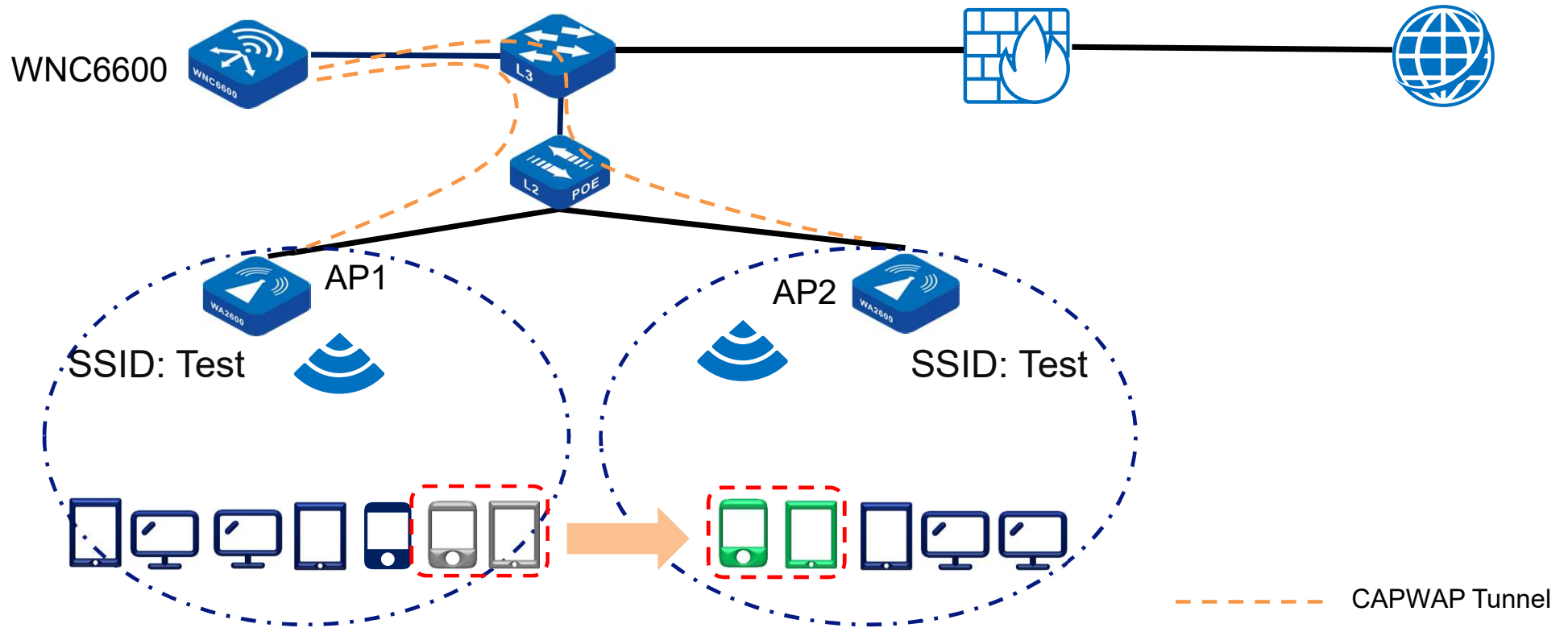
# Key Features - Rich Authentication Methods



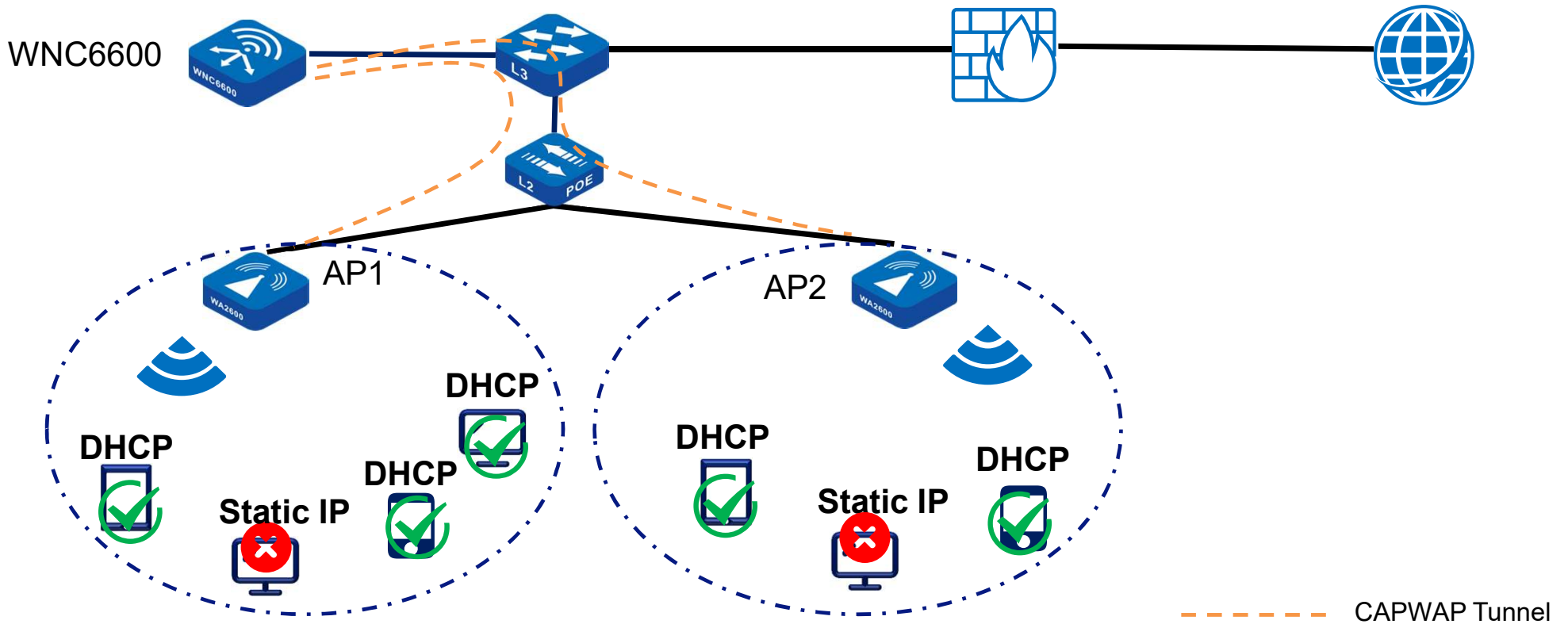
# Key Features – Anti-rogue



# Key Features – User/Traffic Load Balance

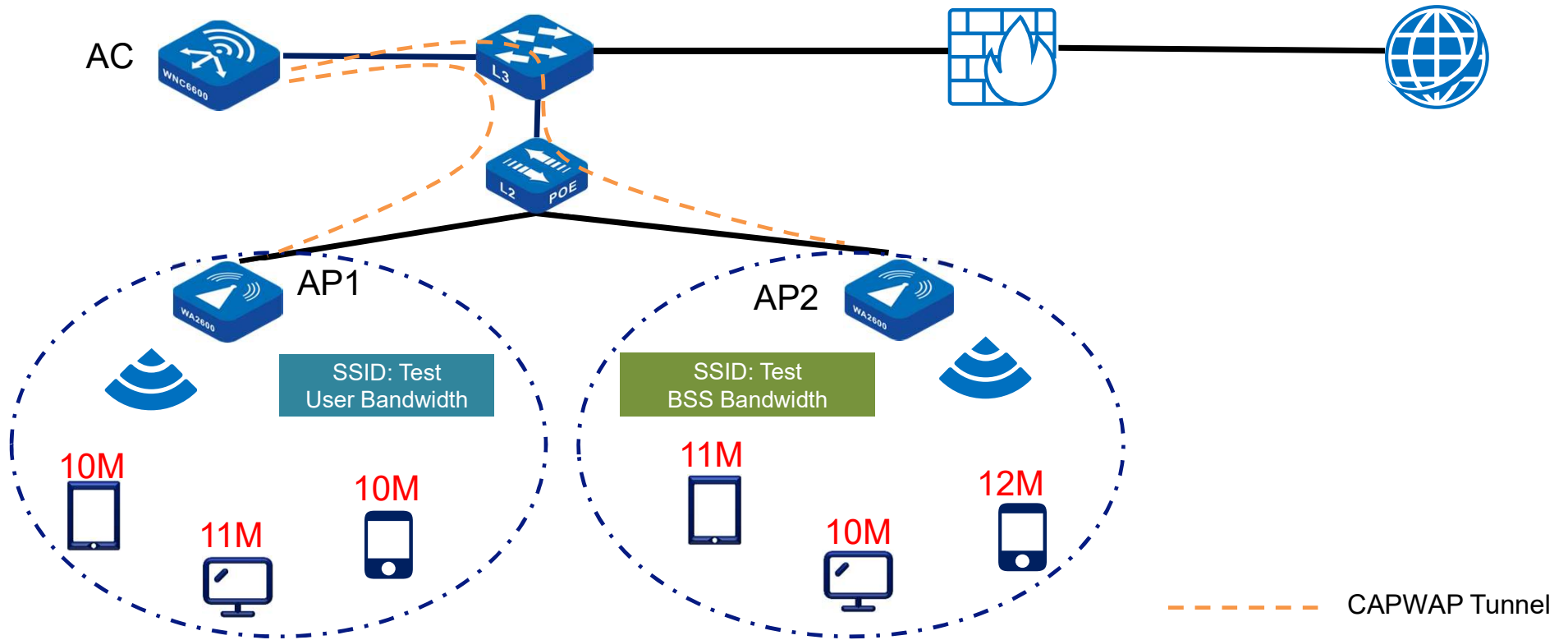


# Key Features – SAVI



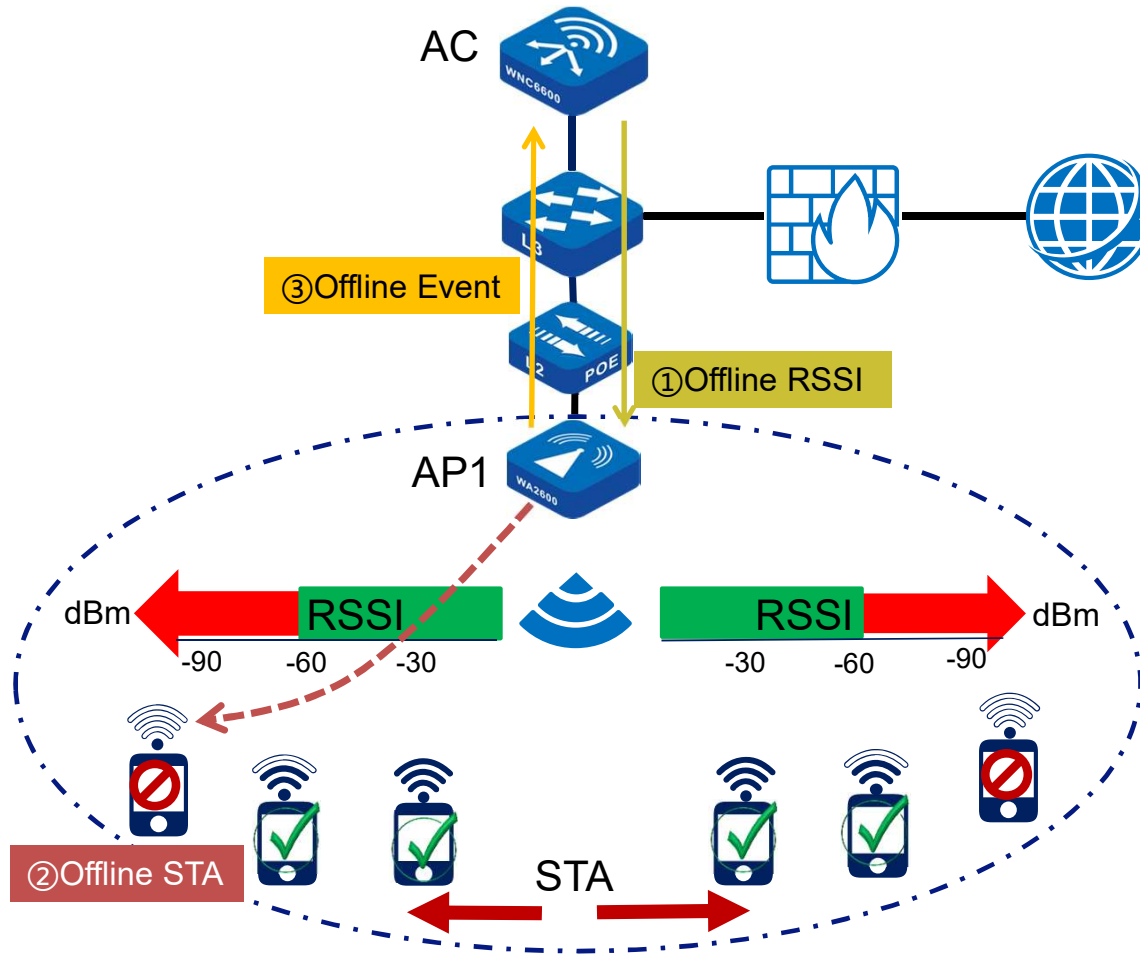


# Key Features – STA QoS





# Key Features – Weak Signal Offline

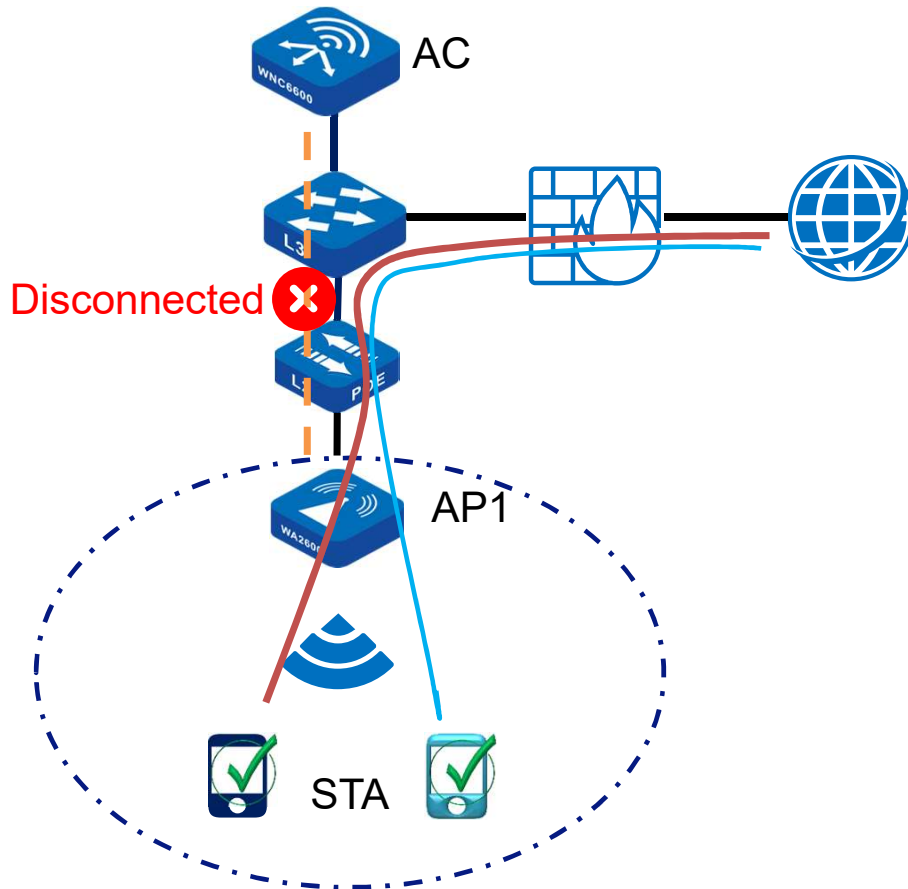


## Weak Signal Offline Feature

1. Enable/disable by one key
2. Manually set offline RSSI

Available Status	Enable
Radio Status	Enable
Time Rule	--NONE--
Time to Reboot	Disable
Wireless Mode	802.11b/g/n
Channel Bandwidth	HT20
Channel	6
Power Boost	Disable
Power	By dBm auto * dBm (3~27)
RSSI Threshold	-95 *dBm(-95~-30) <input checked="" type="checkbox"/> Weak Signal Offline

# Key Features – AP Escape(HAP)



## AP Escape(HAP) Feature

Enable this function, when the CAPWAP tunnel between the AP and AC is disconnected, the AP can still work independently and continuously, and provide services for wireless online users. In addition, new WLAN users with local forwarding are allowed to access the WLAN.

- CAPWAP Tunnel
- CAPWAP Connected STA Data
- CAPWAP Disconnected STA Data

**MAIPU**  
MAKE IT INTELLIGENT

# THANKS

MAIPU, MAKE IT INTELLIGENT

迈普大厦

E-mail: [overseas@maipu.com](mailto:overseas@maipu.com) | Web: [www.maipu.com](http://www.maipu.com) | Tel: +86-28-65544850



MAIPU, MAKE IT INTELLIGENT