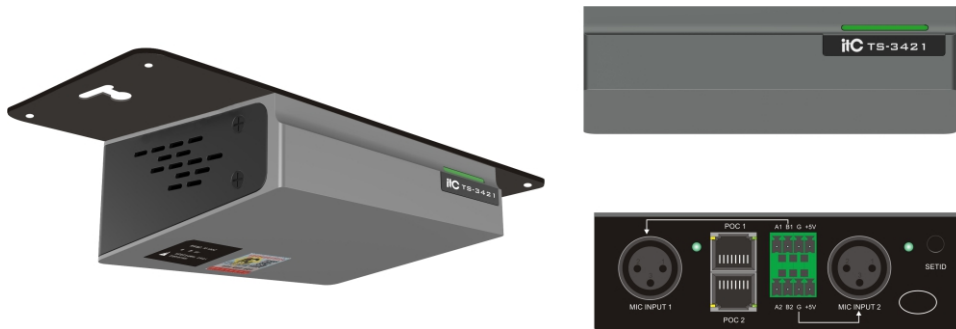




# Converter Box

## TS-3421



- 1.Work indicator
- 2.XLR channel balanced input 1
- 3.Network interface 1
- 4.Network interface 2
- 5.Channel 1 Control Line
- 6.Channel 2 Control Line
- 7.XLR channel balanced input 2
- 8.Channel indicator
- 9.ID code button

### Feature:

- \* The network interface supports IEEE802.3, IEEE802.3u, IEEE802.3x standards, with strong anti-interference ability.
- \* Support network extension function: using 100M network transmission, network cable hand in hand cascading, easy wiring.
- \* Support Edit ID function.
- \* Support web page firmware upgrade function.
- \* Support analog-to-digital conversion function; analog audio is converted into digital signal and transmitted to the controller to realize long-distance network communication function.

### Specification:

Model	TS-3421
Maximum power consumption	4.5W
Power voltage	Powered by conference controller
XLR channel balanced input 1	XLR female plug
XLR channel balanced input 2	XLR female plug
Channel 1 control line	485 control line
Channel 2 control line	485 control line
Network interface	Connected to the conference controller
Frequency response	80Hz~16kHz
Color	Fine sand graphite gray
Edit ID function	ID code button
Installation method	Bottom of the conference table
Dimension (L*W*H)	200*90*44.2mm
Weight	0.49kg