

AFF C250 Systems Installation and Setup Instructions

Prepare for installation

1

Install hardware

2

Cable configuration-
dependent options

3

Complete system setup
and configuration

4

Prepare for installation | Stage 1



Pre-setup

1. Unpack all boxes and inventory contents.

Attention: Customers with specific power requirements must check [Hardware Universe](#) for their configuration options.

2. Watch the [Setup Videos](#).

3. Review the [NetApp ONTAP Configuration Guide](#).

Note: For MetroCluster configurations, use the [MetroCluster installation content](#).



Contents
In the box

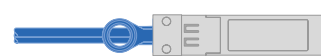
Cables in your shipment are order-dependent. Not all cables shown may be in your shipment.

25 GbE cable (SFP28)
HA and cluster interconnect



Part numbers:
X6566B-05-R6 (112-00639), 0.5m
X6566B-2-R6 (112-00598), 2m
X6566B-5-R6 (112-00600), 5m

32 Gb FC (SFP+ Op)
FC optical network cable



Part numbers:
X66250-2 (112-00342), 2m
X66250-5 (112-00344), 5m
X66250-15 (112-00346), 15m

RJ-45 cables
Wrench port (e0M/BMC)
Data port (e0a/e0b)
(order-dependent)



Part numbers:
X5585-R6 (112-00291), 3m
X6562-R6 (112-00196), 5m

Additional cables



Ethernet cables

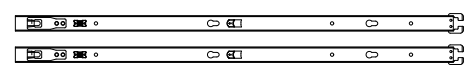


Power cables



micro USB console cable

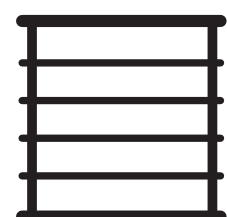
Slide rail kit



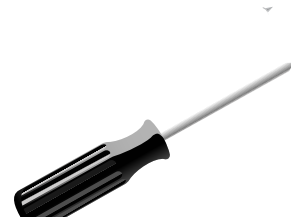
Note: For more cable information and part numbers, see the [Hardware Universe](#).



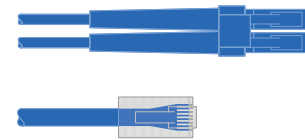
You provide



Rack space
2U for AFF C250



Screwdriver
Phillips #2

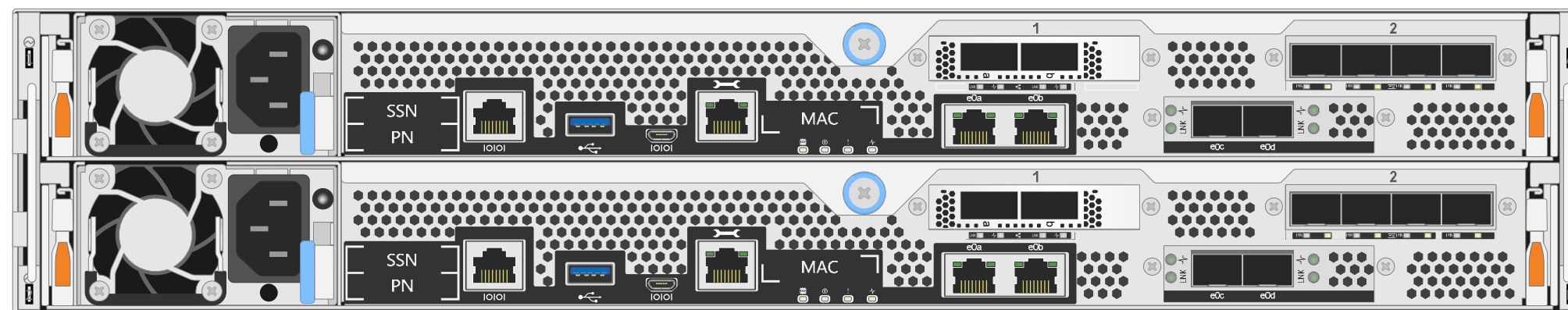


Additional network cables
For connecting your storage system to your network switch and laptop or console.



Laptop or console
With a USB/serial connection and access to a Web browser to configure your storage system

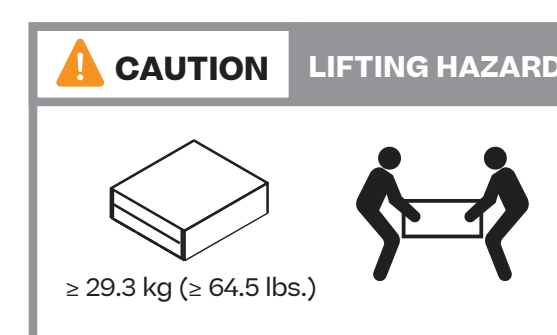
Install hardware | Stage 2



Rear view of AFF C250 system

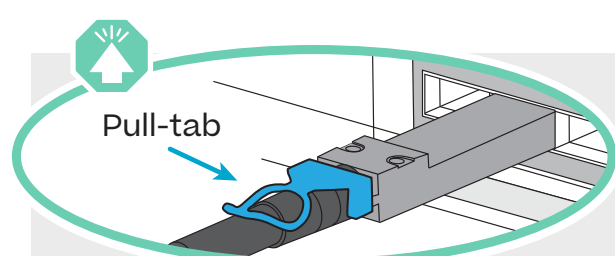
1 Install system in a rack or cabinet:

- Install the rail or telco tray kits, as needed, and then install and secure your system using the instructions included with the kit.
- Use cable identification and management system of your choice. The system does not have a cable management device.
- Place the bezel on the front of the system.



2 Cable the controller for a switchless or switched cluster:

See your network administrator for help connecting to your switches.



Attention: Be sure to check the illustration arrow for the proper cable connector pull-tab orientation.
Note: To unplug a cable, gently pull the tab to release the locking mechanism.

Switchless cluster



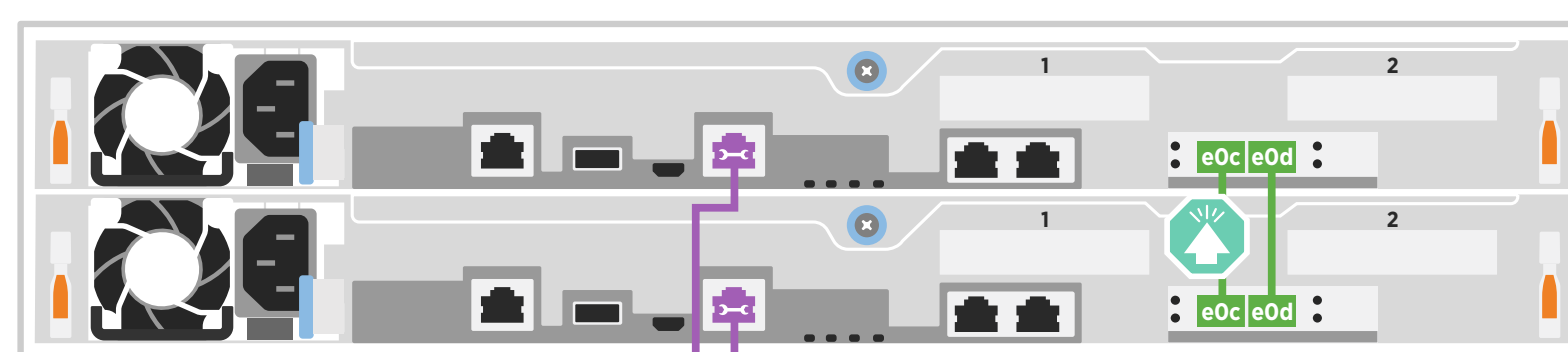
25 GbE cables

- Cable the e0c port to the e0c port and then cable the e0d port to the e0d port.



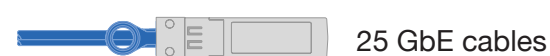
Ethernet cables

- Connect the wrench port (e0M/BMC) to the management switches.



To management network switches

Switched cluster



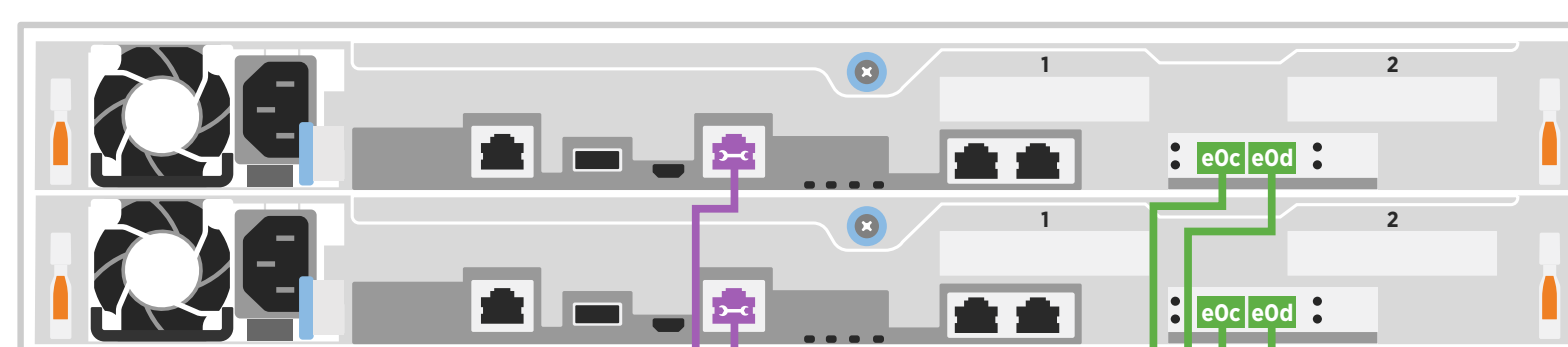
25 GbE cables

- Cable port e0c and port e0d on each controller to the cluster interconnect switches.



Ethernet cables

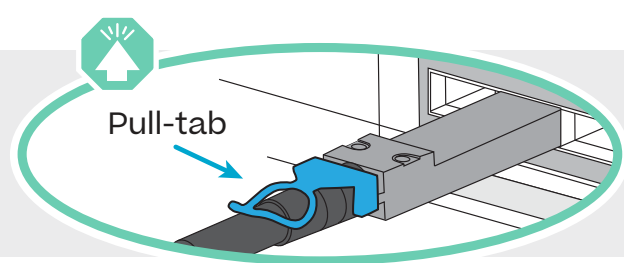
- Connect the wrench port (e0M/BMC) to the management switches.



To management network switches

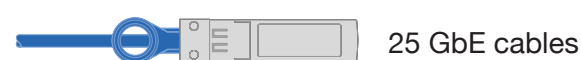
To cluster interconnect switches

Cable configuration-dependent options | Stage 3



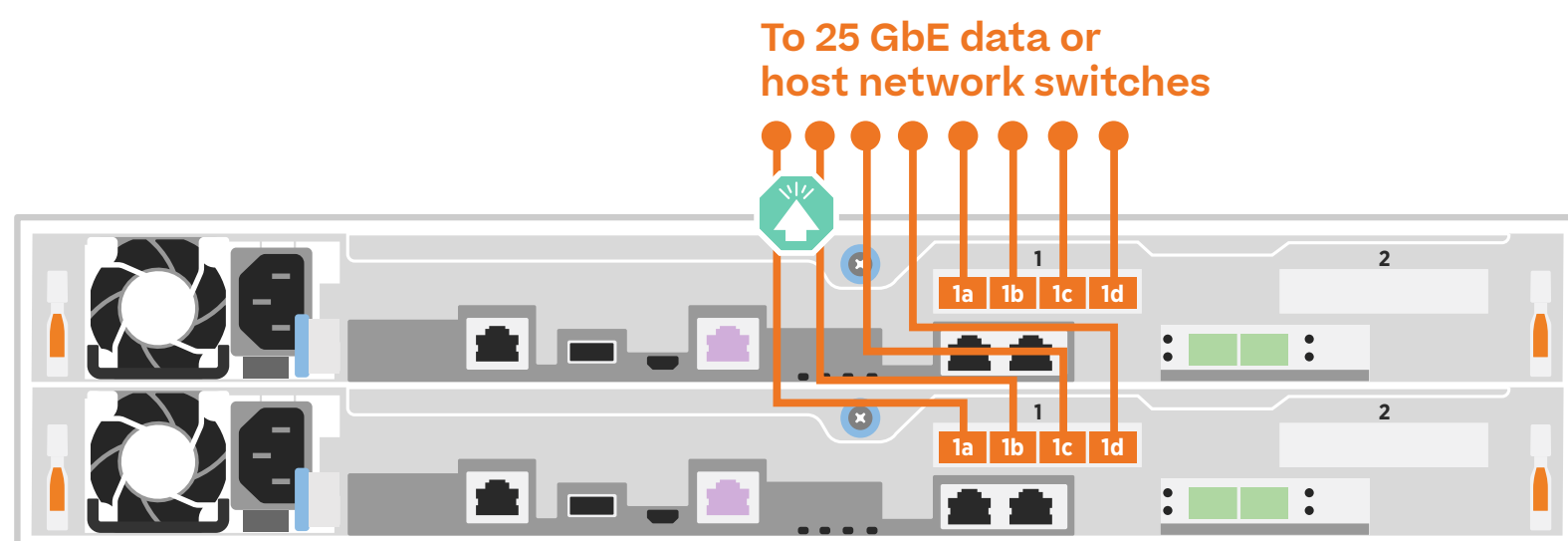
Attention: Be sure to check the illustration arrow for the proper cable connector pull-tab orientation.
Note: To unplug a cable, gently pull the tab to release the locking mechanism.

A 25 GbE host network

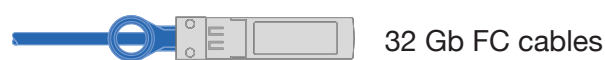


25 GbE cables

Cable ports 1a through 1d to data or host network switches.

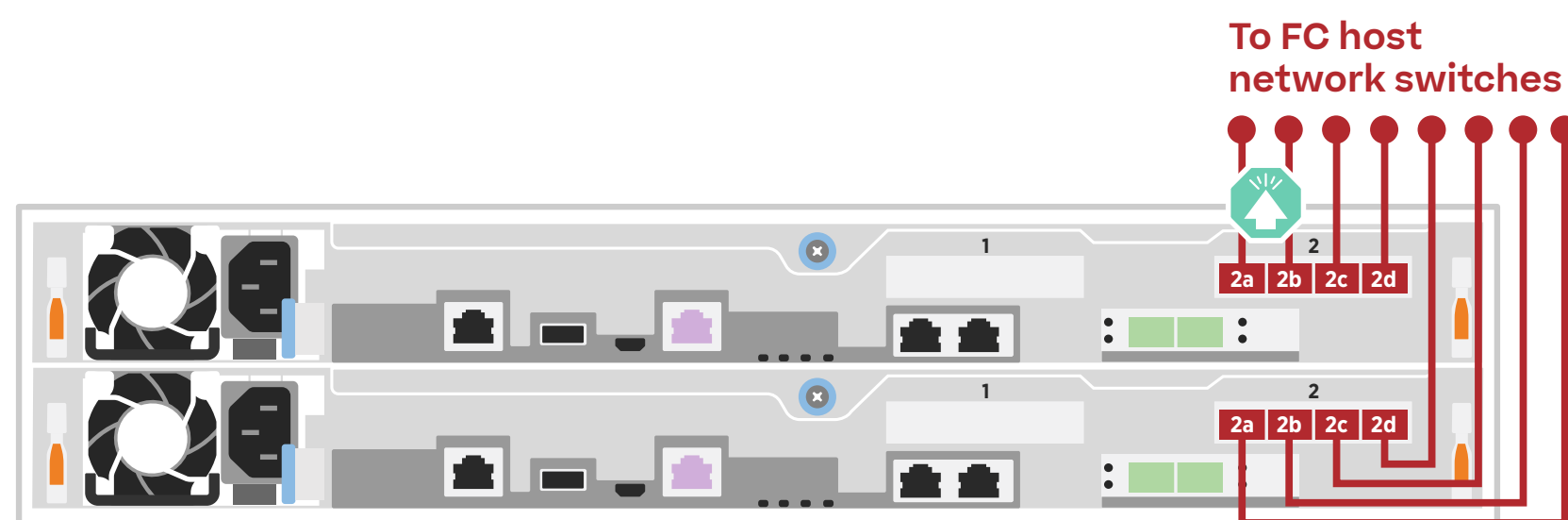


B FC host network



32 Gb FC cables

Cable ports 2a through 2d to the FC host network switches.



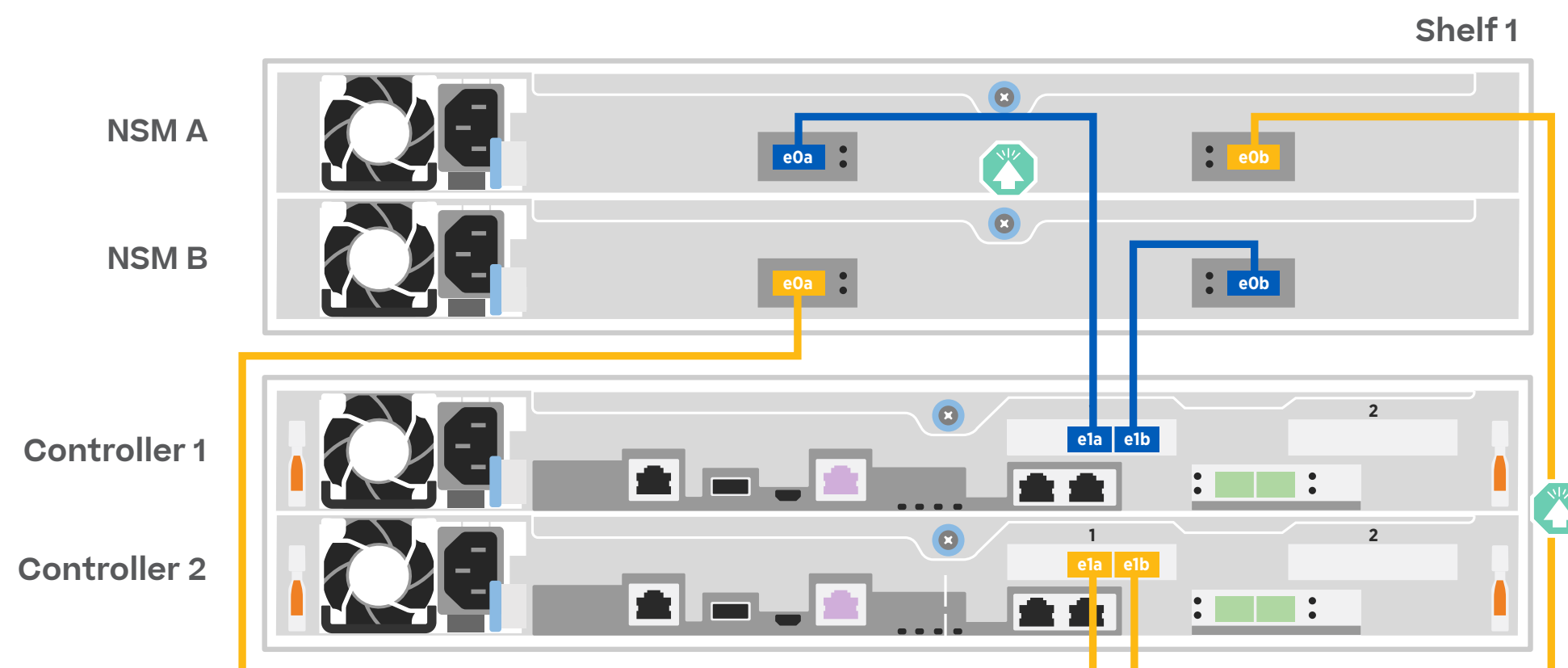
C External storage

Cabling an AFF C250 system to one NS224 shelf



100GbE for storage cable

- 1 Cable e1a on controller 1 to the e0a on NSM A on the NS224.
Cable e1b on controller 1 to the e0b on NSM B on the NS224.
- 2 Cable e1a on controller 2 to the e0a on NSM B on the NS224.
Cable e1b on controller 2 to the e0b on NSM A on the NS224.



Complete system setup and configuration | Stage 4

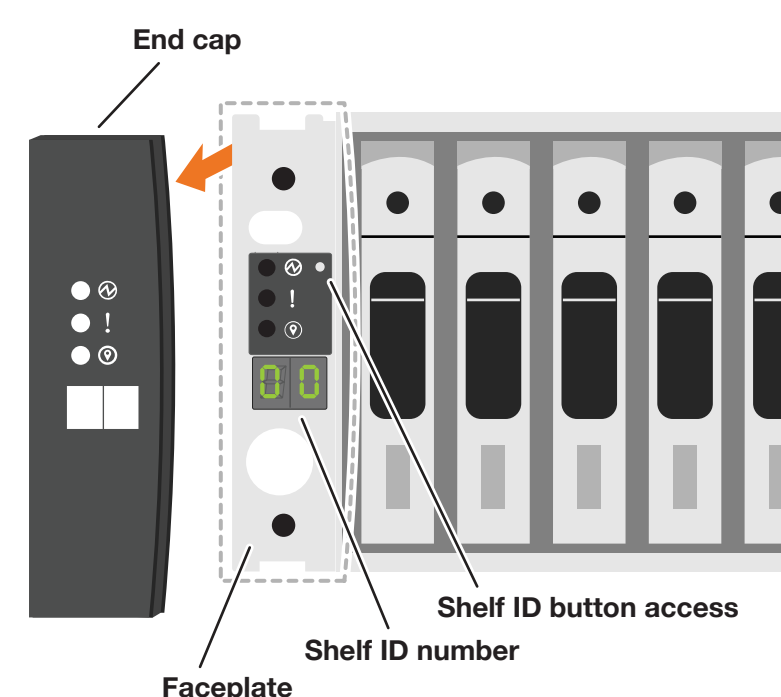
1 Power on the shelves and set shelf IDs:

Note: For NS224 drive shelves, shelf IDs are pre-set to 00 and 01. If you want to change the shelf IDs, use the straightened end of a paperclip, or narrow tipped ball point pen to access the shelf ID button behind the faceplate.

1. Plug the power cords into the shelf power supplies, and then connect them to power sources on different circuits.

Note: NS224 shelves have no power switch and will begin to boot.

2. If you need to change the shelf ID's, see [Change a shelf ID - NS224 shelves](#) for detailed instructions.

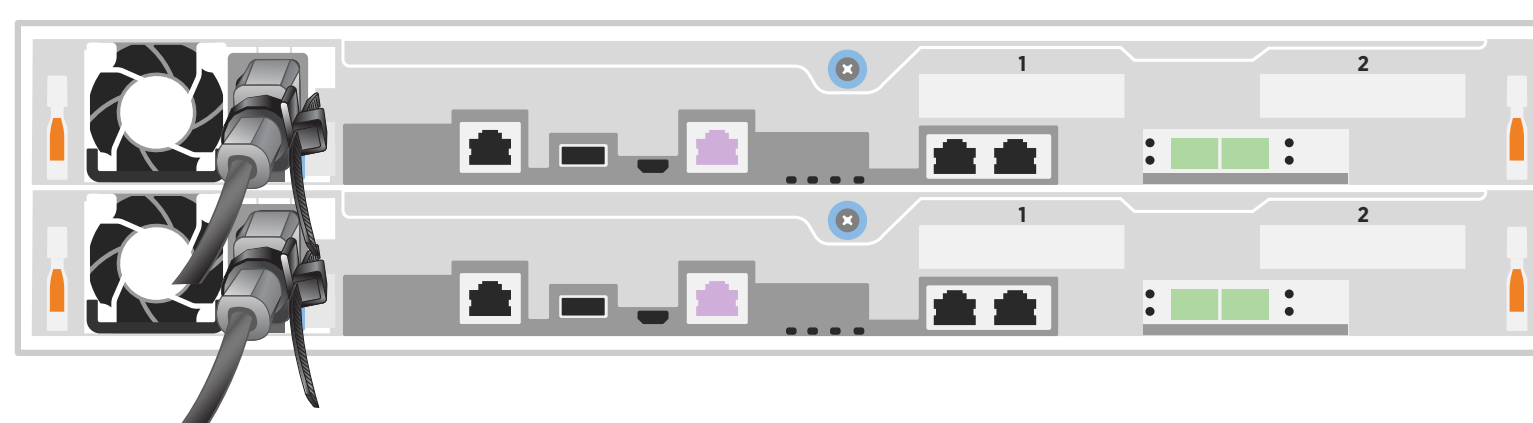


2 Power on the controllers:

Connect the controllers to different power sources.

Note: The system begins to boot as soon as the power supplies are connected to the power sources.

Booting may take up to 8 minutes.



3 Complete initial cluster setup with network discovery:

Note: If your laptop does not support network discovery, see the [Detailed guide](#).

Connect your laptop to the management switch and access the network computers and devices.

a Open File Explorer

b Click network in the left pane. Then right click and select refresh.

c Double-click either ONTAP icon.
Note: Accept any certificates displayed on your screen.

The diagram shows a laptop connected to a management switch. To the right, there are two screenshots of Windows File Explorer. The first screenshot shows the 'Network' pane in the left sidebar, with a blue circle 'b' pointing to it. The second screenshot shows the 'Network' pane with a list of devices, including two 'ONTAP-XXXXXXXXXX' icons, with a blue circle 'c' pointing to one of them.

4 Use System Manager Guided Setup to configure your cluster.

5 Completing setup

1. Click...

- a) mysupport.netapp.com
- b) [Create/log in to your account](#)
- c) [Download and install Active IQ Config Advisor](#)
- d) [Register your system](#)

2. Verify the health of your system by running Config Advisor.

3. After you have completed the initial configuration, go to the [NetApp ONTAP Resources](#) page for information about configuring additional features in ONTAP.