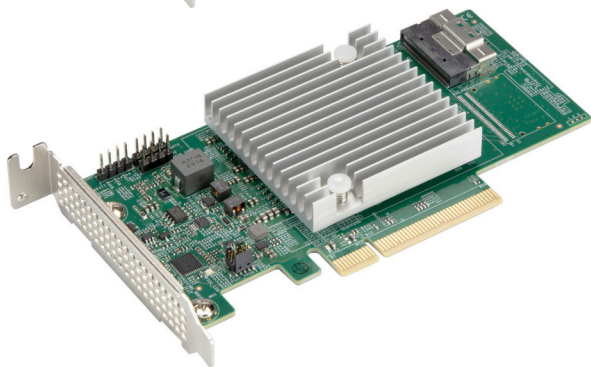
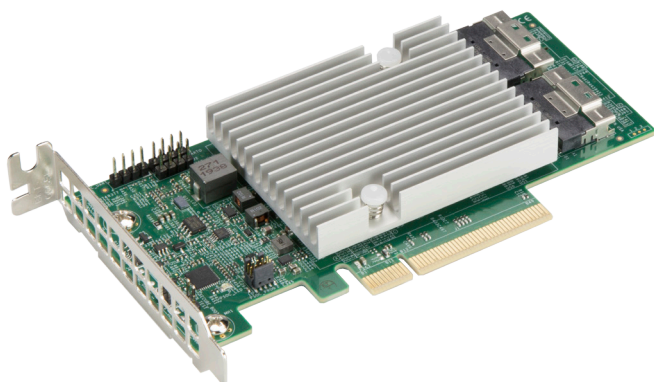




AOC-S3816L-L16iT

AOC-S3808L-L8iT



User's Guide

Revision 1.0a

The information in this User's Guide has been carefully reviewed and is believed to be accurate. The vendor assumes no responsibility for any inaccuracies that may be contained in this document, and makes no commitment to update or to keep current the information in this user's guide, or to notify any person or organization of the updates. **Please Note: For the most up-to-date version of this user's guide, please see our Website at www.supermicro.com.**

Super Micro Computer, Inc. ("Supermicro") reserves the right to make changes to the product described in this user's guide at any time and without notice. This product, including software and documentation, is the property of Supermicro and/or its licensors, and is supplied only under a license. Any use or reproduction of this product is not allowed, except as expressly permitted by the terms of said license.

IN NO EVENT WILL SUPER MICRO COMPUTER, INC. BE LIABLE FOR DIRECT, INDIRECT, SPECIAL, INCIDENTAL, SPECULATIVE OR CONSEQUENTIAL DAMAGES ARISING FROM THE USE OR INABILITY TO USE THIS PRODUCT OR DOCUMENTATION, EVEN IF ADVISED OF THE POSSIBILITY OF SUCH DAMAGES. IN PARTICULAR, SUPER MICRO COMPUTER, INC. SHALL NOT HAVE LIABILITY FOR ANY HARDWARE, SOFTWARE, OR DATA STORED OR USED WITH THE PRODUCT, INCLUDING THE COSTS OF REPAIRING, REPLACING, INTEGRATING, INSTALLING OR RECOVERING SUCH HARDWARE, SOFTWARE, OR DATA.

Any disputes arising between the manufacturer and the customer shall be governed by the laws of Santa Clara County in the State of California, USA. The State of California, County of Santa Clara shall be the exclusive venue for the resolution of any such disputes. Supermicro's total liability for all claims will not exceed the price paid for the hardware product.

FCC Statement: This equipment has been tested and found to comply with the limits for a Class A or Class B digital device pursuant to Part 15 of the FCC Rules. These limits are designed to provide reasonable protection against harmful interference when the equipment is operated in industrial environment for Class A device or in residential environment for Class B device. This equipment generates, uses, and can radiate radio frequency energy and, if not installed and used in accordance with the manufacturer's instruction manual, may cause harmful interference with radio communications. Operation of this equipment in a residential area is likely to cause harmful interference, in which case you will be required to correct the interference at your own expense.

California Best Management Practices Regulations for Perchlorate Materials: This Perchlorate warning applies only to products containing CR (Manganese Dioxide) Lithium coin cells. "Perchlorate Material-special handling may apply. See www.dtsc.ca.gov/hazardouswaste/perchlorate".



WARNING: This product can expose you to chemicals including lead, known to the State of California to cause cancer and birth defects or other reproductive harm. For more information, go to www.P65Warnings.ca.gov.

The products sold by Supermicro are not intended for and will not be used in life support systems, medical equipment, nuclear facilities or systems, aircraft, aircraft devices, aircraft/emergency communication devices or other critical systems whose failure to perform be reasonably expected to result in significant injury or loss of life or catastrophic property damage. Accordingly, Supermicro disclaims any and all liability, and should buyer use or sell such products for use in such ultra-hazardous applications, it does so entirely at its own risk. Furthermore, buyer agrees to fully indemnify, defend and hold Supermicro harmless for and against any and all claims, demands, actions, litigation, and proceedings of any kind arising out of or related to such ultra-hazardous use or sale.

User's Guide Revision 1.0a

Release Date: June 30, 2021

Unless you request and receive written permission from Super Micro Computer, Inc., you may not copy any part of this document.

Information in this document is subject to change without notice. Other products and companies referred to herein are trademarks or registered trademarks of their respective companies or mark holders.

Copyright © 2021 by Super Micro Computer, Inc.
All rights reserved.

Printed in the United States of America

Preface

About this User's Guide

This user's guide is written for system integrators, IT technicians, and knowledgeable end users. It provides information for the installation and use of the AOC-S3816L-L16iT/AOC-S3808L-L8iT expansion card.

About this Expansion Card

The Supermicro SAS AOC-S3816L-L16iT internal controller card features 16 internal SAS3 ports with two internal SlimSAS connectors. The Supermicro SAS AOC-S3808L-L8iT internal controller card features eight internal SAS3 ports with one internal SlimSAS connector. They utilize an LSIAS 3816 (AOC-S3816L-L16iT) or LSIAS 3808 (AOC-S3808L-L8iT) SAS3 controller chip and feature a 1.2GHz processor. The AOC-S3816L-L16iT/AOC-S3808L-L8iT can provide support for server systems of up to 122 devices. The AOC-S3816L-L16iT/AOC-S3808L-L8iT is streamlined to meet the growing demand for increased data throughput and scalability requirements across the enterprise-class server platforms. It is a low power and cost-effective near-line storage solution that delivers maximum performance and reliability.

An Important Note to the User

All images and layouts shown in this user's guide are based upon the latest PCB revision available at the time of publishing. The card you have received may or may not look exactly the same as the graphics shown in this user's guide.

Returning Merchandise for Service

A receipt or copy of your invoice marked with the date of purchase is required before any warranty service will be rendered. You can obtain service by calling your vendor for a Returned Merchandise Authorization (RMA) number. When returning the AOC-S3816L-L16iT/AOC-S3808L-L8iT card to the manufacturer, the RMA number should be prominently displayed on the outside of the shipping carton, and the shipping package is mailed prepaid or hand-carried. Shipping and handling charges will be applied for all orders that must be mailed when service is complete. For faster service, you can also request a RMA authorization online <http://www.supermicro.com/RmaForm/>.

This warranty only covers normal consumer use and does not cover damages incurred in shipping or from failure due to the alternation, misuse, abuse or improper maintenance of products.

Contacting Supermicro

Headquarters

Address: Super Micro Computer, Inc.
980 Rock Ave.
San Jose, CA 95131 U.S.A.

Tel: +1 (408) 503-8000

Fax: +1 (408) 503-8008

Email: marketing@supermicro.com (General Information)
support@supermicro.com (Technical Support)

Website: www.supermicro.com

Europe

Address: Super Micro Computer B.V.
Het Sterrenbeeld 28, 5215 ML
's-Hertogenbosch, The Netherlands

Tel: +31 (0) 73-6400390

Fax: +31 (0) 73-6416525

Email: sales@supermicro.nl (General Information)
support@supermicro.nl (Technical Support)
rma@supermicro.nl (Customer Support)

Website: www.supermicro.nl

Asia-Pacific

Address: Super Micro Computer, Inc.
3F, No. 150, Jian 1st Rd.
Zhonghe Dist., New Taipei City 235
Taiwan (R.O.C)

Tel: +886-(2) 8226-3990

Fax: +886-(2) 8226-3992

Email: support@supermicro.com.tw

Website: www.supermicro.com.tw

Table of Contents

Preface

About this User's Guide	iii
About this Expansion Card.....	iii
An Important Note to the User.....	iii
Returning Merchandise for Service.....	iv
Contacting Supermicro.....	v

Chapter 1 Overview

1-1 Overview	1-1
1-2 Technical Specifications	1-1
General.....	1-1
OS Support	1-1
Power Consumption.....	1-1
Physical Dimensions	1-1

Chapter 2 Hardware Components

2-1 Controller Card Layout and Components	2-1
2-2 Major Components	2-2
2-3 Front Connectors and LED	2-3
SAS Connectors.....	2-3
PSoC LED	2-3
2-4 Front Header Locations	2-4
2-5 Rear LEDs.....	2-5
Heartbeat LED.....	2-5
System Error LED	2-5
Overheat LED.....	2-5

Chapter 3 Installation

3-1 Static-Sensitive Devices.....	3-1
Precautions	3-1
Unpacking	3-1
3-2 Before Installation	3-2
3-3 Installing the Controller Card	3-2
3-4 Static Sensitive Devices.....	3-4
Precautions	3-4
Unpacking	3-4
3-5 Installing the Drivers in Windows.....	3-5
3-6 Uninstalling the Drivers	3-5

Chapter 4 Booting

4-1 Configuring Boot Settings 4-1

Chapter 1

Overview

1-1 Overview

Congratulations on purchasing your expansion card from an acknowledged leader in the industry. Supermicro products are designed with the utmost attention to detail to provide you with the highest standards in quality and performance. For product support and updates, please visit our website at <http://www.supermicro.com/>

1-2 Technical Specifications

General

Host PCIe Gen4 low-profile card

Sixteen internal SAS3 ports for AOC-S3816L-L16iT, eight internal SAS3 ports for AOC-S3808L-L8iT

1.2GHz processor

HBA supports up to 122 devices with expander

Supports 12GB/s, 6GB/s, and 3GB/s SAS data transfer rates

Supports 6GB/s and 3GB/s SATA data transfer rates

Supports MCTP over PCIe

Supports HW Secure Boot

Enlarged venting hole mounting bracket for improved airflow

Ambient operating temperature: 10°C - 55°C

OS Support

Windows, Linux

Power Consumption

11 Watts for AOC-S3808L-L8iT, 14 Watts for AOC-S3816L-L16iT

Physical Dimensions

Card PCB dimensions: 5.4" x 2.71" (L x H)

Notes

Chapter 2

Hardware Components

2-1 Controller Card Layout and Components

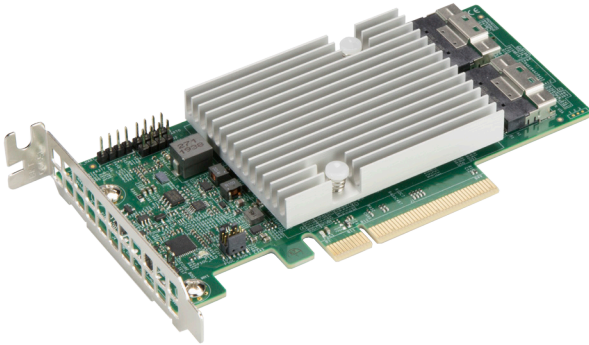


Figure 2-1. AOC-S3816L-L16iT/AOC-S3808L-L8iT

The AOC-S3816L-L16iT is a low-profile SAS controller card with 16 internal SAS3 ports and two SlimSAS x8 connectors. The AOC-S3808L-L8iT is a low-profile SAS controller card with eight internal SAS3 ports and one SlimSAS x8 connector. The following pages describe the components and settings for the AOC-S3816L-L16iT/AOC-S3808L-L8iT.

2-2 Major Components

The following are the major components that make up the AOC-S3816L-L16iT/AOC-S3808L-L8iT controller card:

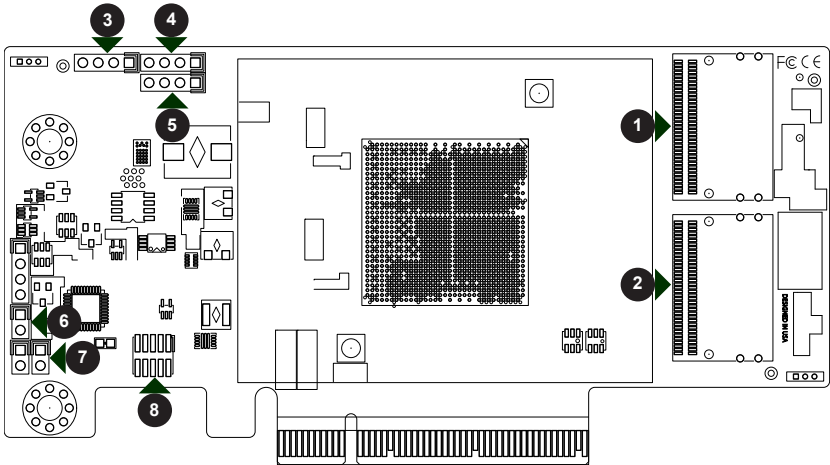


Figure 2-2. AOC-S3816L-L16iT/AOC-S3808L-L8iT Front Layout

AOC-S3816L-L16iT/AOC-S3808L-L8iT Major Components	
Component	Description
1	SAS Connectors SAS 0-7
2	SAS Connectors SAS 8-15
3	Debug Header, designated PSOC_UART, J6
4	Debug Header, designated UART0, J3
5	Debug Header, designated SDB_UART, J2
6	Boot Loader Header, designated SBL_DIS, JP2
7	Secure Boot Header, designated SECURE_BOOT, JP3
8	PSoC Program Header, designated PSOC_PROG, J5

2-3 Front Connectors and LED

SAS Connectors

There are two SlimSAS x8 connectors on the AOC-S3816L-L16iT controller card and one SlimSAS x8 connector on the AOC-S3808L-L8iT controller card, providing 16 ports (AOC-S3816L-L16iT) or eight ports (AOC-S3808L-L8iT) that support a transfer rate on each port of up to 12Gb/s with SAS devices and 6Gb/s with SATA devices.

PSoC LED

A blinking green LED indicates the PSoC is running on the controller chip.

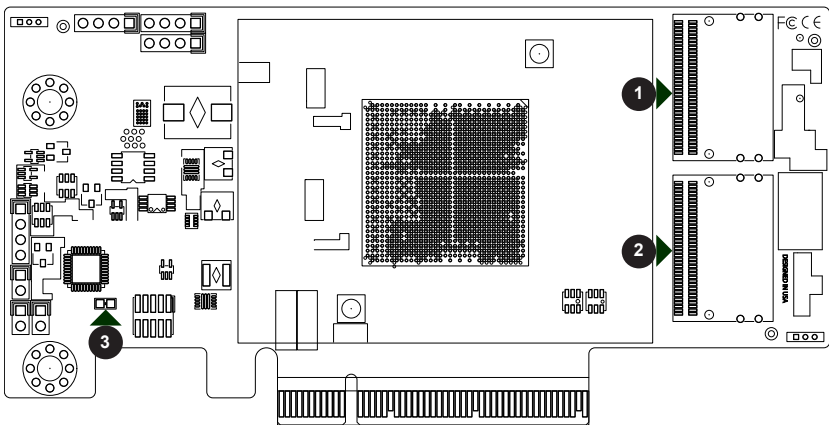


Figure 2-3. Front SAS3 Connectors and LED

AOC-S3816L-L16iT/AOC-S3808L-L8iT Front Connectors and LED	
Component	Description
1	SAS Connectors SAS 0-7
2	SAS Connectors SAS 8-15
3	PSoC LED

2-4 Front Header Locations

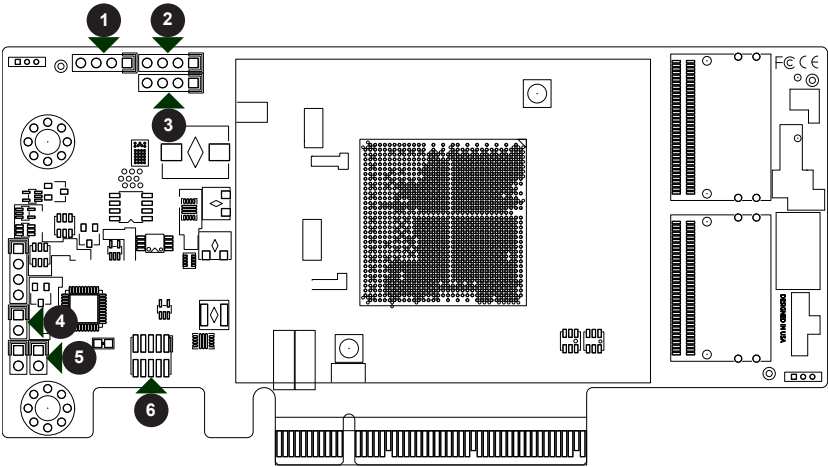


Figure 2-4. Front Headers

AOC-S3816L-L16iT/AOC-S3808L-L8iT Front Headers		
Header	Description	Purpose
1	Debug Header, designated PSOC_UART, J6	For Engineering Debug
2	Debug Header, designated UART0, J3	For Engineering Debug
3	Debug Header, designated SDB_UART, J2	For Engineering Debug
4	Boot Loader Header, designated SBL_DIS, JP2	For Engineering Test
5	Secure Boot Header, designated SECURE_BOOT, JP3	For Engineering Test
6	PSoc Program Header, designated PSOC_PROG, J5	For Engineering Test

2-5 Rear LEDs

Heartbeat LED

A blinking green LED indicates the firmware is running on the controller chip.

System Error LED

A solid red LED indicates a system error has occurred.

Overheat LED

A solid red LED indicates the controller card has overheated.

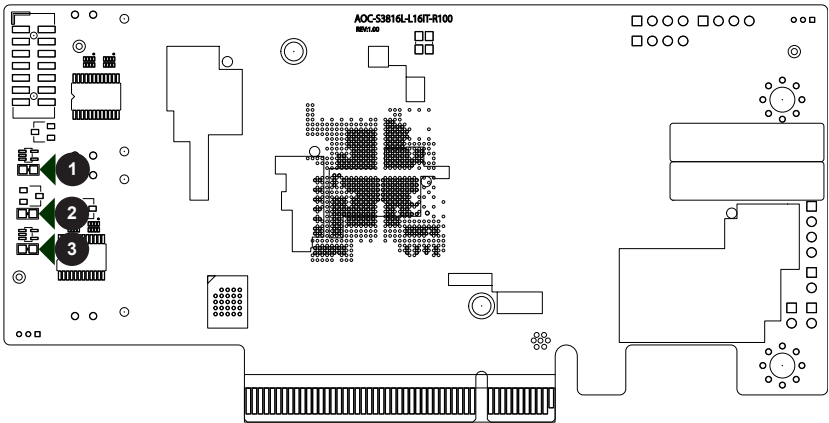


Figure 2-5. Rear LEDs

AOC-S3816L-L16iT/AOC-S3808L-L8iT Rear LEDs	
Component	Description
1	Heartbeat LED
2	System Error LED
3	Overheat LED

Chapter 3

Installation

3-1 Static-Sensitive Devices

Electrostatic Discharge (ESD) can damage electronic components. To avoid damaging your controller card, it is important to handle it very carefully. The following measures are generally sufficient to protect your equipment from ESD.

Precautions

- Use a grounded wrist strap designed to prevent static discharge.
- Touch a grounded metal object before removing the controller card from the antistatic bag.
- Handle the controller card by its edges only; do not touch its components or peripheral chips.
- Put the controller card back into the antistatic bags when not in use.
- For grounding purposes, make sure that your system chassis provides excellent conductivity between the power supply, the case, the mounting fasteners and the controller card.

Unpacking

The controller card is shipped in antistatic packaging to avoid static damage. When unpacking your component, make sure you are static protected.

Note: To avoid damaging your components and to ensure proper installation, be sure to always connect the power cord last, and always remove it before adding, removing or changing any hardware components.

3-2 Before Installation

To install the controller card properly, follow the steps below.

Prior to Installation

1. Power down the system and unplug the power cord.
2. Use industry-standard anti-static equipment (such as gloves or wrist strap) and follow the precautions on page 3-1 to avoid damage caused by ESD.

3-3 Installing the Controller Card

Depending upon which system configuration is used, a riser card may or may not be required to install the AOC-S3816L-L16iT/AOC-S3808L-L8iT.

Installing the Controller Card

1. Power down the system, remove the power cords from the rear of the power supply, and remove the system cover.
2. Verify that your controller card is equipped with the correct length of PCIe slot mounting bracket for your system. The AOC-S3816L-L16iT/AOC-S3808L-L8iT controller card includes a low-profile PCIe mounting bracket. However, if your system features full-height PCIe slots, replace the low-profile bracket with a full-height bracket.
3. Insert the controller card into a x8 PCIe slot.
4. Connect the SAS interface cables from the controller card to either the direct attached storage target devices or the cable sockets on the backplanes.
5. The cable latch will click into the locked position when connected properly.
6. Replace the system cover, plug in the power cord, and power up the system.

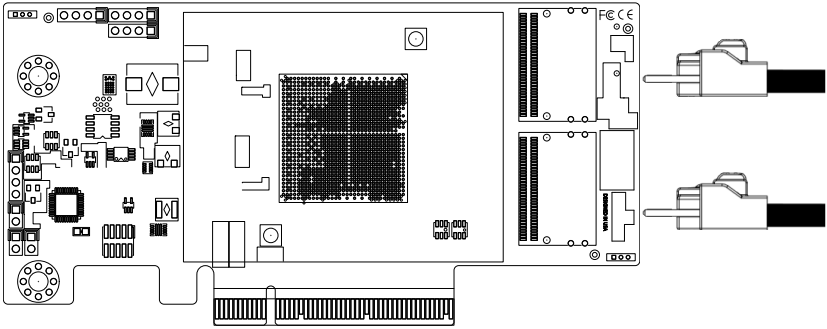


Figure 3-1. Connecting the Cables

3-4 Static Sensitive Devices

Electrostatic Discharge (ESD) can damage electronic components. To avoid damaging your controller card, it is important to handle it very carefully. The following measures are generally sufficient to protect your equipment from ESD.

Precautions

- Use a grounded wrist strap designed to prevent static discharge.
- Touch a grounded metal object before removing the controller card from the antistatic bag.
- Handle the controller card by its edges only; do not touch its components or peripheral chips.
- Put the controller card back into the antistatic bags when not in use.
- For grounding purposes, make sure that your system chassis provides excellent conductivity between the power supply, the case, the mounting fasteners and the controller card.

Unpacking

The controller card is shipped in antistatic packaging to avoid static damage. When unpacking your component, make sure you are static protected.

Note: To avoid damaging your components and to ensure proper installation, be sure to always connect the power cord last, and always remove it before adding, removing or changing any hardware components.

3-5 Installing the Drivers in Windows

Refer to the instructions that came with your controller card and follow the manufacturer's recommended steps for installing the NVMe driver. Download the latest drivers from the Supermicro project board at <https://www.supermicro.com/wdl/driver/SAS/LSI/3808-3816/Driver>.

3-6 Uninstalling the Drivers

To Uninstall the Drivers in Windows:

Follow the system driver uninstall procedure in the operating system.

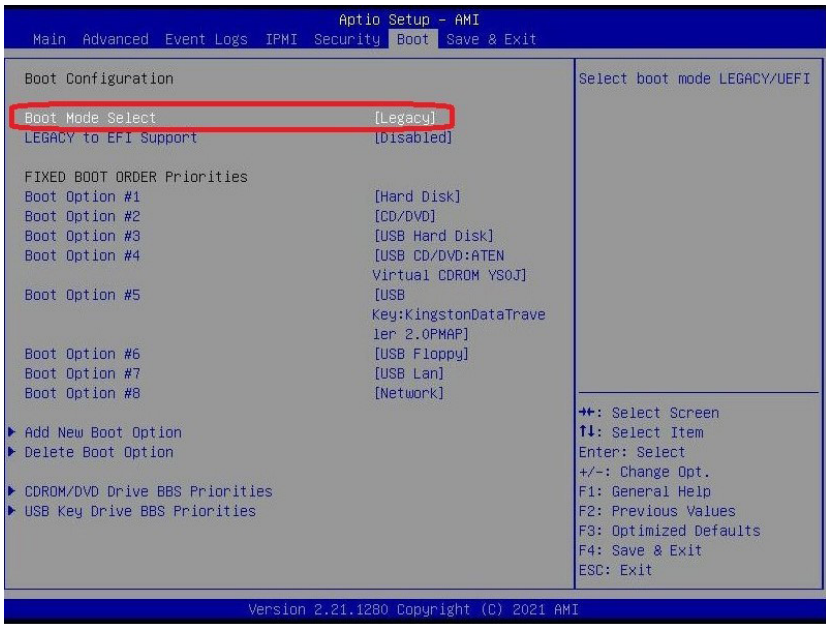
Chapter 4

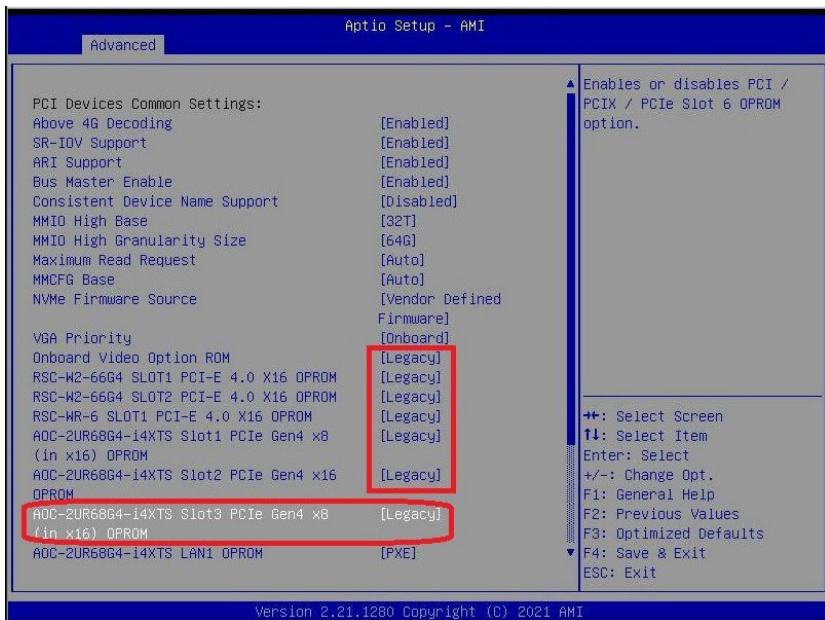
Booting

Depending on the system, motherboard, and BIOS version, use this feature to configure Boot Settings to boot as UEFI or Legacy mode.

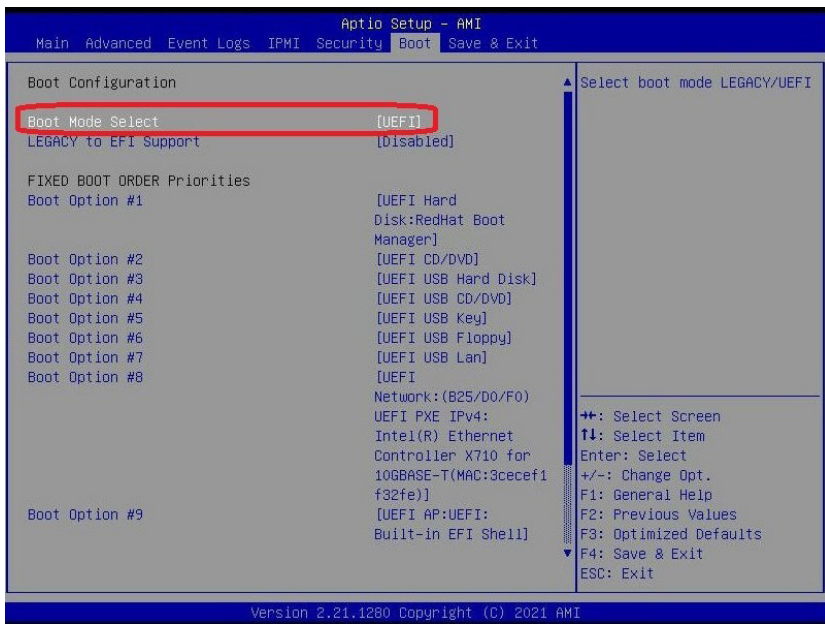
4-1 Configuring Boot Settings

1. If the boot mode changes to “Legacy”, the PCIe settings change to “Legacy”.

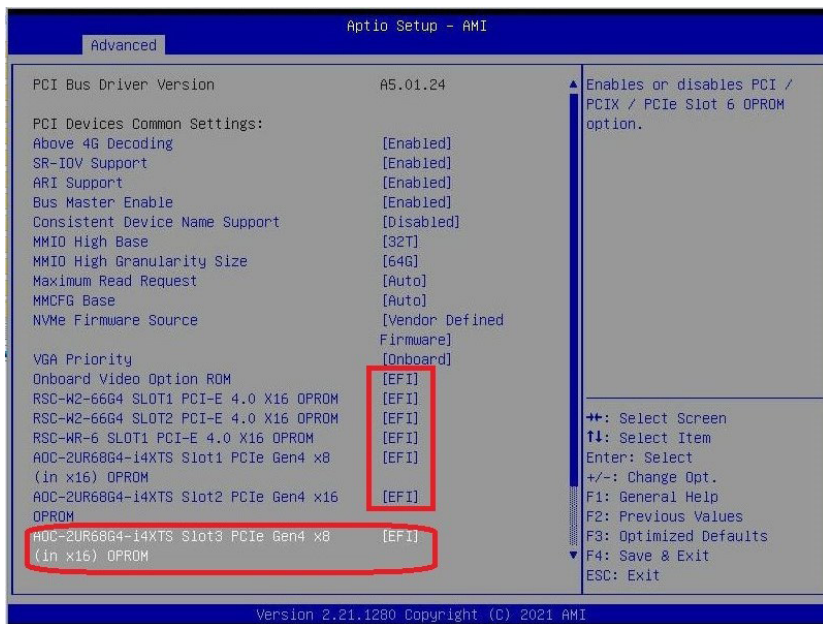




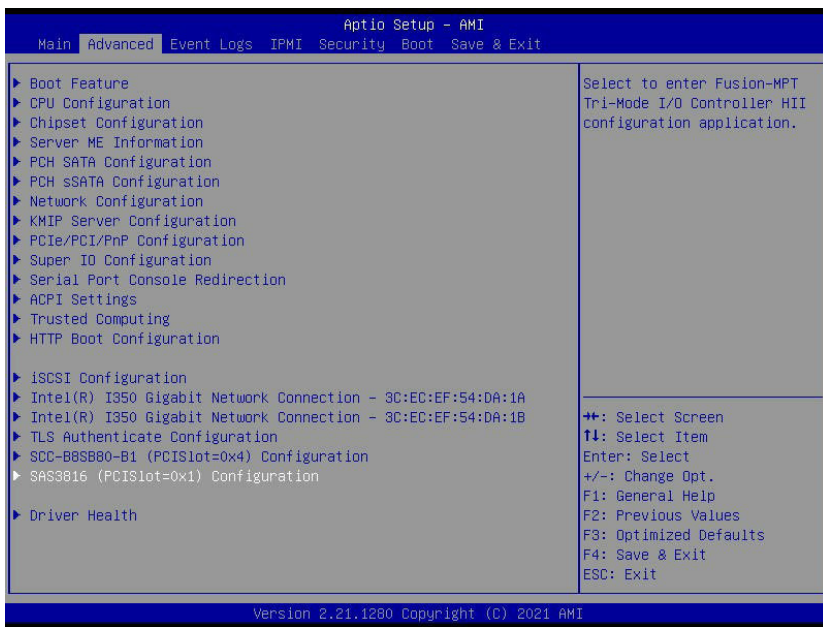
2. If the boot mode changes to “UEFI”, the PCIe settings change to “UEFI”.



3. The add-on card installed in the riser slot changes to EFI mode.



4. The controller configuration menu can only be supported under UEFI mode.



(Disclaimer Continued)

The products sold by Supermicro are not intended for and will not be used in life support systems, medical equipment, nuclear facilities or systems, aircraft, aircraft devices, aircraft/emergency communication devices, or other critical systems whose failure to perform be reasonably expected to result in significant injury or loss of life or catastrophic property damage. Accordingly, Supermicro disclaims any and all liability, and should buyer use or sell such products for use in such ultra-hazardous applications, it does so entirely at its own risk. Furthermore, buyer agrees to fully indemnify, defend and hold Supermicro harmless for and against any and all claims, demands, actions, litigation, and proceedings of any kind arising out of or related to such ultra-hazardous use or sale.