

MAIPU
MAKE IT INTELLIGENT

MAIPU

SWITCH PRODUCT LINE 2023

Maipu Communication Technology Co., Ltd.

迈普大厦



MAIPU, MAKE IT INTELLIGENT



AGENDA

CONTENTS

CHAPTER 1	2022 MAIPU CAMPUS SWITCH PRODUCT LINE
CHAPTER 2	2022 MAIPU DATACENTER SWITCH PRODUCT LINE
CHAPTER 3	2022 MAIPU SWITCH TYPICAL APPLICATION
CHAPTER 4	2023 MAIPU SWITCH PRODUCT LINE ROADMAP
CHAPTER 5	MAIPU SWITCH CORRESPONDENCE MATRIX



MAIPU CAMPUS SWITCH PRODUCT LINE

NSS6600 10/40G Distribution Series

- Full redundant modular design
- Medium Campus Distribution
- Static/RIP/OSPF/BGP Routing
- MPLS L3 VPN
- Full Modular Design

NEW



NSS6600-10 (V2)

- Dual Control Engines
- Dual Switch Fabrics
- 8 Service Slots
- Distribution architecture
- Four Power Slots
- Dual FAN Slots

NEW



NSS6600-06 (V2)

- Dual Control Engines
- Dual Switch Fabrics
- 4 Service Slots
- Distribution architecture
- Four Power Slots
- Dual FAN Slots



NSS6600-04

- Dual Control Engines
- 4 Service Slots
- Full Mesh architecture
- Dual Power Slots
- One FAN Slot

NSS5810 1/10/25/40G L3 Series

- L3 Gigabit Aggregation
- Static/RIP/OSPF/BGP Routing
- MPLS L3 VPN
- Modular Dual Power Supply

NSS5810-26XF

NSS5810 Series

- 24-Port 10G SFP+
- 2-Port 40G QSFP+
- Dual Power/Fan Slots



NSS5810-50TXFP

NSS5810 Series

- 24-Port 1G Base-T
- 18-Port 10G SFP+
- 8-Port 25G SFP28
- Dual Power Slots

NSS4330 1/10/40G L3 Series

- L3 Gigabit Aggregation
- Static/RIP/OSPF/BGP Routing
- MPLS L3 VPN
- Modular Dual Power Supply



NSS4330-32TXF
NSS4330-56TXF
NSS4330-56TXP
NSS4330-60TXF

NSS4330 Series

- 24/48-Port 1G Base-T
- Fixed 6-Port 10G
- 40G interface expansion
- Dual Power Slots



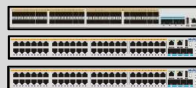
NSS4330-36GXF
NSS4330-60GXF

NSS4330 Series

- 24/48-Port 1G Base-X
- Fixed 4-Port 10G
- 40G interface expansion
- Dual Power Slots

S4330 1/10G L3 Series

- L3 Gigabit Aggregation
- Static/RIP/OSPF/BGP Routing
- Modular Dual Power Supply



S4330-54GXF
S4330-54TXF
S4330-54TXP
S4330-54TGXF

S4330 Series

- 48-Port 1G Base-T/Base-X
- Fixed 4-Port 10G+ 1*Slot
- Dual Power Slots
- Stackable



S4330-30TXF
S4330-30TXP

S4330 Series

- 24-Port 1G Base-T
- Fixed 4-Port 10G+ 1*Slot
- Dual Power Slots
- Stackable

S4230 1/10G L3 Series

- L3 Gigabit Aggregation
- Static/RIP/OSPF/BGP Routing
- Fixed Dual Power Supply



S4230-30TXF-AC
S4230-54TXF-AC

S4230 Series

- 24/48-Port 1G Base-T
- Fixed 6-Port 10G
- Fixed Dual AC Power
- Stackable



S4230-36GTXF-AC
S4230-36GTXF-DC48

S4230 Series

- 24-Port 1G Base-X + 8-Port 1G Base-T
- Fixed 4-Port 10G
- Fixed Dual AC/Single DC Power
- Stackable

S3330 1/10G L3 Lite Series

- L3 Lite Gigabit Access
- Static/RIP/OSPF Routing
- Fixed Dual Power Supply



S3330-12TXF/P-AC
S3330-28TXF/P-AC
S3330-54TXF/P-AC

S3330 Series

- 8/24/48-Port 1G Base-T
- Fixed 4-Port 10G
- Fixed Dual AC (24/48 Port)
- Stackable



S3330-28GXF-AC
S3330-28GXF-DC48

S3330 Series

- 24-Port 1G Base-X
- Fixed 4-Port 10G
- Fixed Dual AC/Single DC Power
- Stackable

S3230 1/10G L3 Lite Series

- L3 Lite Gigabit Access
- Static Routing
- Fixed Single Power Supply



S3230-54TXF-AC
S3230-54TXP-AC

S3230 Series

- 48-Port 1G Base-T
- Fixed 4-Port 10G
- Fixed One AC Power
- Stackable



S3230-28TXF-AC
S3230-28TXP-AC

S3230 Series

- 24-Port 1G Base-T
- Fixed 4-Port 10G
- Fixed One AC Power
- Stackable



/// NSS6600-10/06/04 10G/40G L3 MPLS DISTRIBUTION SWITCH

Typical Scenario

Campus Network Distribution L3 Switch



Specification	NSS6600-04(V1)	NSS6600-06(V2)	NSS6600-10(V2)
Switching Capacity (Tbps)	1Tbps	3.84Tbps	3.84Tbps
Control Engine Slots (MPU)	2	2	2
Switching Fabric Slots (SFU)	N/A	2	2
Line Card Slots (LPU)	4	4	8
Power Module Slots	2	4	4
Fan Array Slots	1	2	2
Maximum 1000M Base-T	192	192	384
Maximum 1000M Base-X	192	192	384
Maximum 10G SFP+	64	192	384
Maximum 40G QSFP+	N/A	48	96

Rich L2/L3 Feature

- Static/RIP/OSPF/BGP/ISIS Routing Protocol
- Rich L2&L3 Features
- MPLS L3 VPN

Virtualization

- VST, H-VST Stacking
- M-LAG

Management

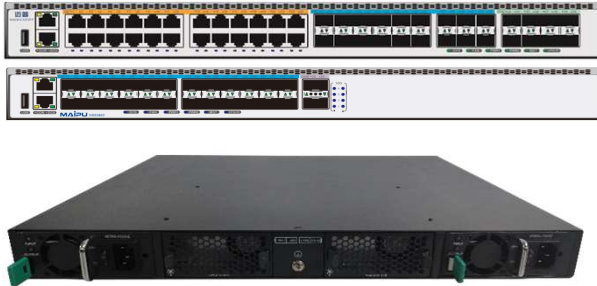
- SNMP/Telnet/CLI/SSH
- Zero Touch Provision(ZTP)



NSS5810 1G/10G/25G/40G L3 MPLS AGGREGATION SWITCH

Typical Scenario

Campus Network
Aggregation L3 Switch



Specification	NSS5810-50TXFP	NSS5810-26XF
Switching Capacity (Gbps)	808Gbps	640Gbps
Fixed 1G Base-T	24	N/A
Fixed 10G SFP+	18	24
Fixed 25G SFP28	8	N/A
Fixed 40G QSFP28	N/A	2
Power Module Slots	2	2
FAN Module Slots	N/A	2

Rich L2/L3 Feature

- Static/RIP/OSPF/BGP/ISIS Routing Protocol
- Rich L2&L3 Features
- MPLS L3 VPN

Virtualization

- VST, H-VST Stacking
- M-LAG

Management

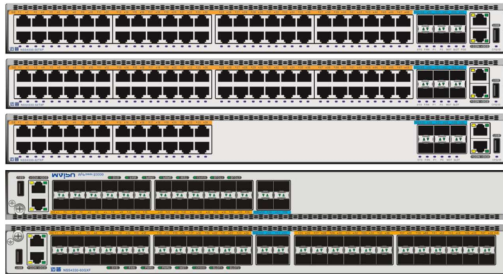
- SNMP/Telnet/CLI/SSH
- Zero Touch Provision(ZTP)



NSS4330 1G/10G/40G L3 MPLS AGGREGATION SWITCH

Typical Scenario

Campus Network
Gigabit L3 Aggregation Switch



Model	NSS4330-32TXF	NSS4330-32TXP	NSS4330-56TXF	NSS4330-56TXP	NSS4330-36GXF	NSS4330-60GXF
Switching Capacity (Gbps)	328Gbps	328Gbps	376Gbps	376Gbps	448Gbps	496Gbps
Fixed 1000M Base-T	24	24	48	48	N/A	N/A
Fixed 1000M Base-X	N/A	N/A	N/A	N/A	24	48
Fixed 10G SFP+	6	6	6	6	4	4
40G QSFP+	Modular	Modular	Modular	Modular	Modular	Modular
PoE&PoE+	N/A	380/760W	N/A	380W/760W	N/A	N/A
Expansion Slots	1	1	1	1	2	2
Modular Power Slots	Dual	Dual	Dual	Dual	Dual	Dual

Rich L2/L3 Feature

- Static/RIP/OSPF/BGP/ISIS Routing Protocol
- Rich L2&L3 Features
- MPLS L3 VPN

Virtualization

- VST, H-VST Stacking
- M-LAG

Management

- SNMP/Telnet/CLI/SSH
- Zero Touch Provision(ZTP)



S4330 1G/10G L3 ACCESS SWITCH

Typical Scenario

Campus Network
Gigabit L3 Access Switch



Model	S4330-30TXF	S4330-30TXP	S4330-54TXF	S4330-54TXP	S4330-54GXF	S4330-54TGXF
Switching Capacity (Gbps)	168Gbps	168Gbps	216Gbps	216Gbps	216Gbps	216Gbps
Fixed 1000M Base-T	24	24	48	48	N/A	32
Fixed 1000M Base-X	N/A	N/A	N/A	N/A	48	16
Fixed 10G SFP+	4	4	4	4	4	4
PoE&PoE+	N/A	380W/760W	N/A	380W/760W /1400W	N/A	N/A
Expansion Slots	1	1	1	1	1	1
Modular Power Slots	Dual	Dual	Dual	Dual	Dual	Dual

Rich L2/L3 Feature

- Static/RIP/OSPF/BGP/ISIS Routing Protocol
- Rich L2&L3 Features

Virtualization

- VST, H-VST Stacking
- M-LAG

Management

- SNMP/Telnet/CLI/SSH
- Zero Touch Provision(ZTP)



MAIPU S4230 1G/10G L3 ACCESS SWITCH

Typical Scenario

Campus Network
Gigabit L3 Access Switch



Model	S4230-30TXF-AC	S4230-54TXF-AC	S4230-36GTXF-AC	S4230-36GTXF-DC48
Switching Capacity (Gbps)	168Gbps	216Gbps	168Gbps	168Gbps
Fixed 1000M Base-T	24	48	8	8
Fixed 1000M Base-X	N/A	N/A	24	24
Fixed 10G SFP+	6	6	4	4
Fixed Power Supply	Dual AC	Dual AC	Dual AC	Single DC Dual Input

Rich L2/L3 Feature

- Static/RIP/OSPF/BGP/ISIS Routing Protocol
- Rich L2&L3 Features

Virtualization

- VST, H-VST Stacking
- M-LAG

Management

- SNMP/Telnet/CLI/SSH
- Zero Touch Provision(ZTP)



S3330 1G/10G L3 LITE ACCESS SWITCH

Typical Scenario

Campus Network
Gigabit L3 Lite Access Switch



Model	S3330-12TXF-AC	S3330-12TXP-AC	S3330-28TXF-AC	S3330-28TXP-AC	S3330-28GXF-AC	S3330-28GXF-DC48	S3330-54TXF-AC	S3330-54TXP
Switching Capacity (Gbps)	104Gbps	104Gbps	128Gbps	128Gbps	128Gbps	128Gbps	176Gbps	176Gbps
Fixed 1000M Base-T	8	8	24	24	N/A	N/A	48	48
Fixed 1000M Base-X	N/A	N/A	N/A	N/A	24	24	N/A	N/A
Fixed 10G SFP+	4	4	4	4	4	4	4	4
PoE&PoE+	N/A	120W	N/A	380W	N/A	N/A	N/A	380W/760W
Fixed Power Supply	Single AC	Single AC	Dual AC	Dual AC	Dual AC	Single DC Dual Input	Dual AC	N/A
Modular Power Slots	N/A	N/A	N/A	N/A	N/A	N/A	N/A	Dual Modular Power Slots

Rich L2/L3 Feature

- Static/RIP/OSPF Routing Protocol
- Rich L2 Features

Virtualization

- VST, H-VST Stacking
- M-LAG

Management

- SNMP/Telnet/CLI/SSH
- Zero Touch Provision(ZTP)



S3230 1G/10G L3 LITE ACCESS SWITCH

Typical Scenario

Campus Network
Gigabit L3 Lite Access Switch



Model	S3230-28TXF-AC	S3230-28TXP-AC	S3230-54TXF-AC	S3230-54TXP-AC
Switching Capacity (Gbps)	128Gbps	128Gbps	216Gbps	176Gbps
Fixed 1000M Base-T	24	24	48	48
Fixed 10G SFP+	4	4	6	4
Expansion Slots	N/A	N/A	N/A	1
PoE&PoE+	N/A	380W	N/A	760W
Fixed Power Supply	Single AC	Single AC	Single AC	Single AC

Rich L2/L3 Feature

- Static Routing Protocol
- Rich L2 Features

Virtualization

- VST, H-VST Stacking
- M-LAG

Management

- SNMP/Telnet/CLI/SSH
- Zero Touch Provision(ZTP)



AGENDA

CONTENTS

CHAPTER 1	2022 MAIPU CAMPUS SWITCH PRODUCT LINE
CHAPTER 2	2022 MAIPU DATACENTER SWITCH PRODUCT LINE
CHAPTER 3	2022 MAIPU SWITCH TYPICAL APPLICATION
CHAPTER 4	2023 MAIPU SWITCH PRODUCT LINE ROADMAP
CHAPTER 5	MAIPU SWITCH CORRESPONDENCE MATRIX



MAIPU DATA CENTER SWITCH PRODUCT LINE

NSS18500 100G VxLAN Core Switch

- Crossbar architecture
- Data Center VxLAN Spine Node
- Static/RIP/OSPF/BGP Routing
- VST/H-VST/M-LAG



NSS18500-08

8 Slots Core Switch

- Full Redundant Design
- 8 Service Slots
- 4+2 Switching Fabric
- Crossbar architecture
- Modular FAN Slots
- Modular Power Slots



NSS18500-04

4 Slots Core Switch

- Full Redundant Design
- 4 Service Slots
- 4+2 Switching Fabric
- Crossbar architecture
- Modular FAN Slots
- Modular Power Slots

NSS5950 Full 100G VxLAN Switch

- Data Center VxLAN 100G Leaf Node
- Static/RIP/OSPF/BGP Routing
- VST/H-VST/M-LAG



NSS5950-32QFP

Full 100G TOR Switch

- 32*100G QSFP26
- Modular Fan Slots
- Modular Power Slots

NSS5930 25G+100G VxLAN Switch

- Data Center VxLAN 25G Leaf Node
- Static/RIP/OSPF/BGP Routing
- VST/H-VST/M-LAG



NSS5930-56SFP

25G+100G TOR Switch

- 48*25G SFP26
- 8*100G QSFP28
- Modular Power Slots
- Modular Fan Slots

NSS5830 10G+100G VxLAN Switch

- Data Center VxLAN 10G Leaf Node
- Static/RIP/OSPF/BGP Routing
- VST/H-VST/M-LAG



NSS5830-32XQFP

10G+100G TOR Switch

- 24*10G SFP+
- 8*100G QSFP28
- Modular Power Slots
- Modular Fan Slots



NSS5830-56XQFP

10G+100G TOR Switch

- 48*10G SFP+
- 8*100G QSFP28
- Modular Power Slots
- Modular Fan Slots



NSS5830-56XTQFP

10G+100G TOR Switch

- 48*10G Base-T
- 6*100G QSFP28
- Modular Power Slots
- Modular Fan Slots



NSS18500 SERIES 100G DATACENTER CORE SWITCH

Typical Scenario

Datacenter VxLAN Spine
Core Switch



Specification	NSS18500-04	NSS18500-08
Switching Capacity (Tbps)	28.8Tbps	57.6Tbps
Switching Fabric Slots (SFU)	4+2	4+2
Control Engine Slots (MPU)	2	2
Line Card Slots(LPU)	4	8
Power Module Slots	4	8
Fan Array Slots	2	2
Maximum 1000M Base-T	192	384
Maximum 10G SFP+	192	384
Maximum 40G QSFP+	136	272
Maximum 100G QSFP28	144	288

Rich L2/L3 Feature

- Static/RIP/OSPF/BGP/ISIS Routing Protocol
- Rich L2&L3 Features
- MPLS L3 VPN

Datacenter Features

- VxLAN, EVPN
- VST, H-VST, M-LAG Stacking
- Hot Patch, ISSU

SDN Ready

- Zero Touch Provision(ZTP)
- Telemetry + Netconf



NSS5950 DATA CENTER FULL 100G TOR SWITCH

Typical Scenario

Enterprise Datacenter
100G VxLAN Leaf Switch



Specification	NSS5950-32QFP
Switching Capacity (Tbps)	6.4Tbps
Fixed 100G QSFP28	32
Power Module Slots	2
Fan Module Slots	6

Rich L2/L3 Feature

- Static/RIP/OSPF/BGP/ISIS Routing Protocol
- Rich L2&L3 Features
- MPLS L3 VPN

Datacenter Features

- VxLAN, EVPN
- VST, H-VST, M-LAG Stacking
- Hot Patch, ISSU

SDN Ready

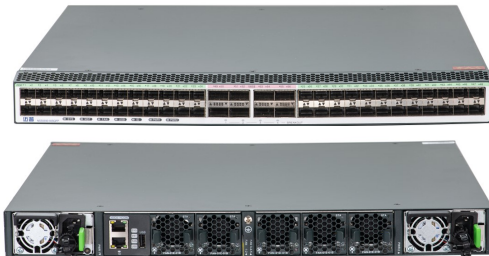
- Zero Touch Provision(ZTP)
- Telemetry + Netconf



NSS5930 DATA CENTER 25G+100G TOR SWITCH

Typical Scenario

Enterprise Datacenter
25G VxLAN Leaf Switch



Specification	NSS5930-56SQFP
Switching Capacity (Tbps)	4Tbps
Fixed 25G SFP28	48
Fixed 100G QSFP28	8
Power Module Slots	2
Fan Module Slots	5

Rich L2/L3 Feature

- Static/RIP/OSPF/BGP/ISIS Routing Protocol
- Rich L2&L3 Features
- MPLS L3 VPN

Datacenter Features

- VxLAN, EVPN
- VST, H-VST, M-LAG Stacking
- Hot Patch, ISSU

SDN Ready

- Zero Touch Provision(ZTP)
- Telemetry + Netconf



/// NSS5830 DATA CENTER 10G+100G TOR SWITCH

Typical Scenario

Enterprise Datacenter
10G VxLAN Leaf Switch



Specification	NSS5830-32XQFP	NSS5830-56XQFP	NSS5830-54XTQFP
Switching Capacity (Tbps)	2.08Tbps	2.56Tbps	2.16Tbps
Fixed 10G SFP+	24	48	N/A
Fixed 10G Base-T	N/A	N/A	48
Fixed 100G QSFP28	8	8	6
Power Module Slots	2	2	2
Fan Module Slots	5	5	5

Rich L2/L3 Feature

- Static/RIP/OSPF/BGP/ISIS Routing Protocol
- Rich L2&L3 Features
- MPLS L3 VPN

Datacenter Features

- VxLAN, EVPN
- VST, H-VST, M-LAG Stacking
- Hot Patch, ISSU

SDN Ready

- Zero Touch Provision(ZTP)
- Telemetry + Netconf



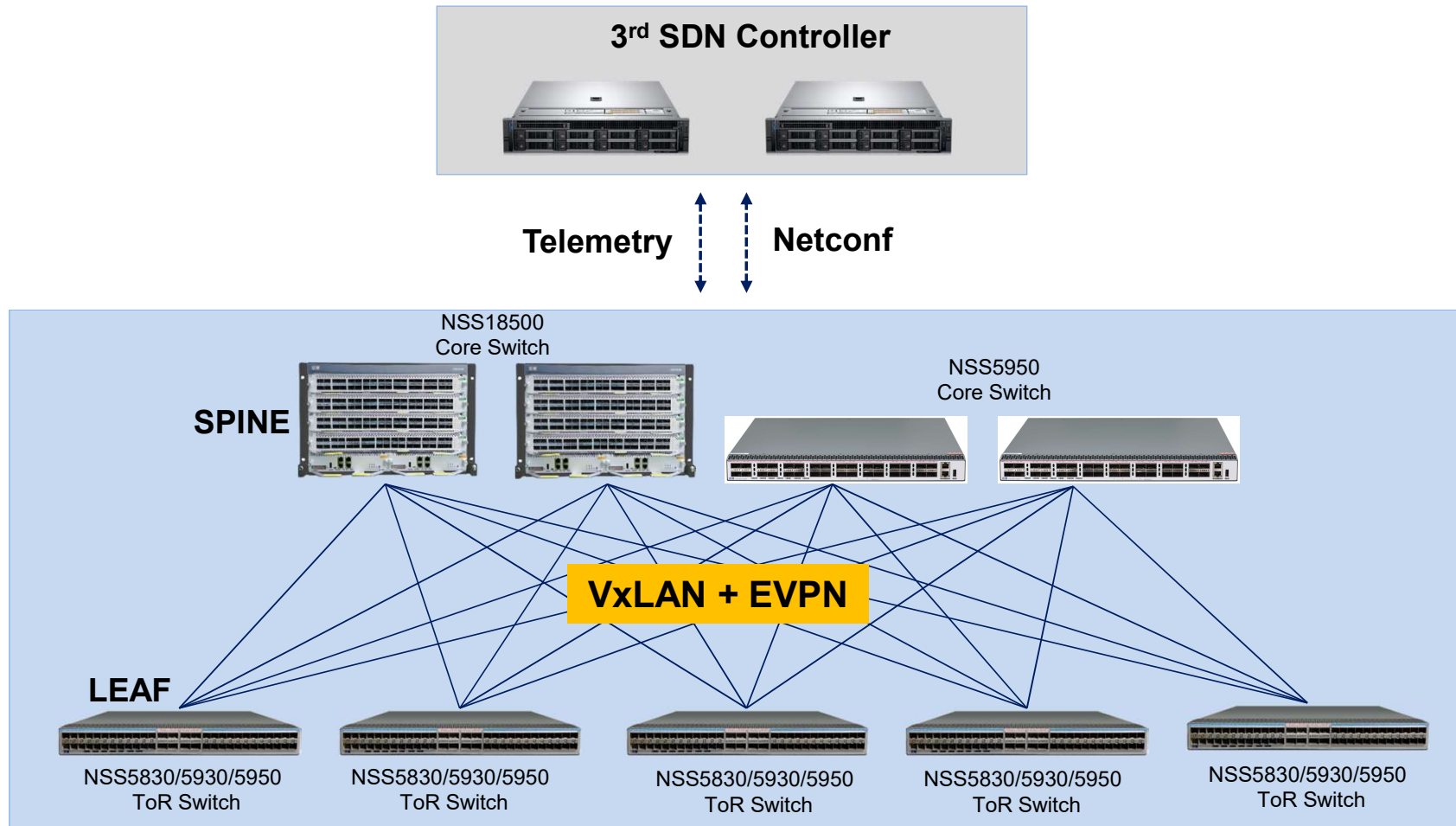
AGENDA

C O N T E N T S

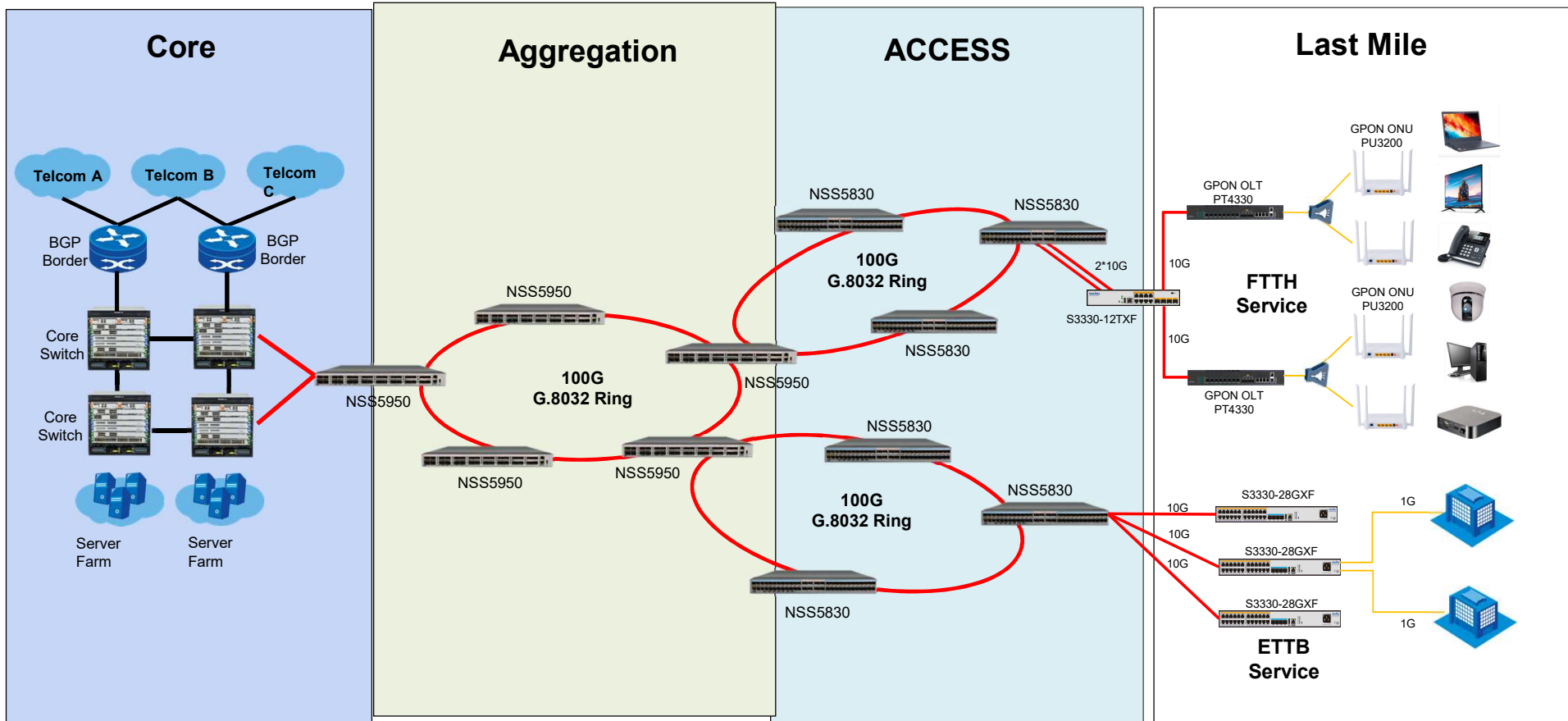
CHAPTER 1	2022 MAIPU CAMPUS SWITCH PRODUCT LINE
CHAPTER 2	2022 MAIPU DATACENTER SWITCH PRODUCT LINE
CHAPTER 3	2022 MAIPU SWITCH TYPICAL APPLICATION
CHAPTER 4	2023 MAIPU SWITCH PRODUCT LINE ROADMAP
CHAPTER 5	MAIPU SWITCH CORRESPONDENCE MATRIX



MAIPU ENTERPRISE DATA CENTER SOLUTION



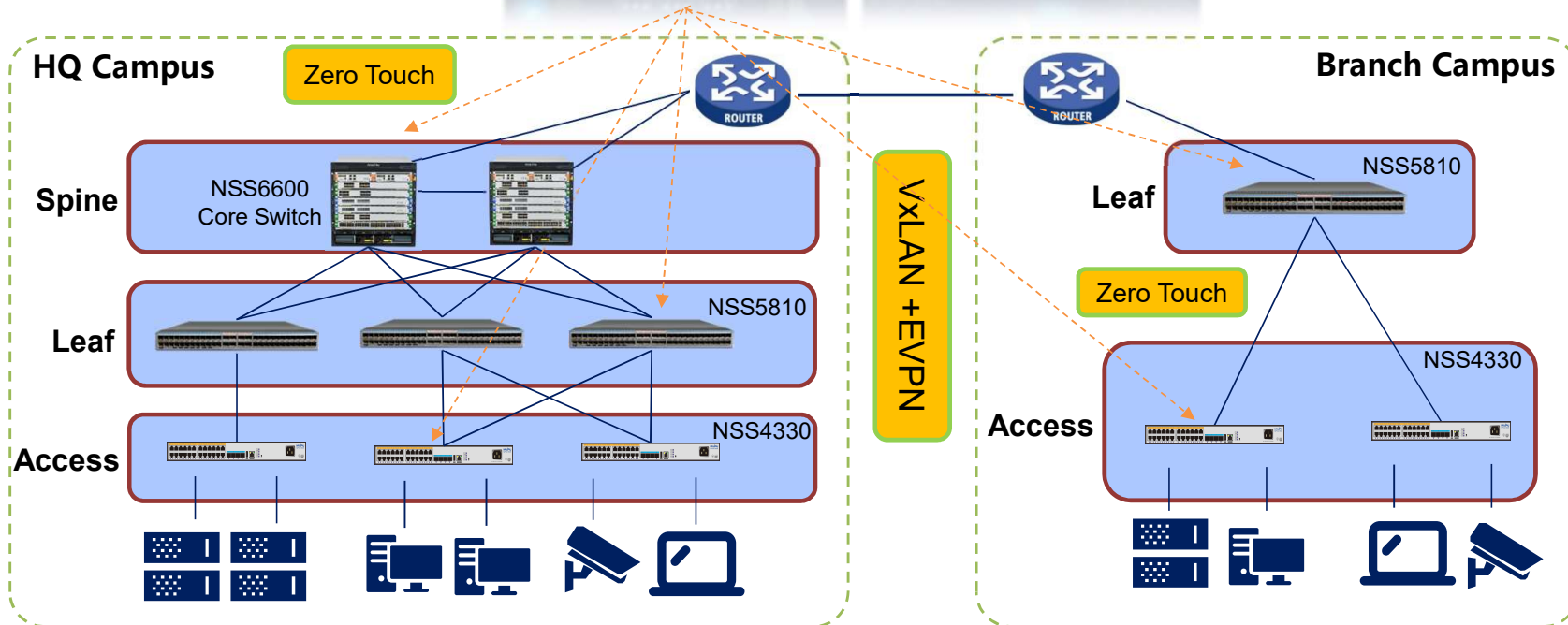
MAIPU ISP FTTX NETWORK SOLUTION



MAIPU ENTERPRISE SDN CAMPUS SOLUTION



- Orchestration
- Visualization
- Authentication



AGENDA

CONTENTS

CHAPTER 1	2022 MAIPU CAMPUS SWITCH PRODUCT LINE
CHAPTER 2	2022 MAIPU DATACENTER SWITCH PRODUCT LINE
CHAPTER 3	2022 MAIPU SWITCH TYPICAL APPLICATION
CHAPTER 4	2023 MAIPU SWITCH PRODUCT LINE ROADMAP
CHAPTER 5	MAIPU SWITCH CORRESPONDENCE MATRIX



NEW NSS11500 CAMPUS L3 CORE SWITCH SERIES




NSS11500 Series

Specification	NSS11500-04	NSS11500-08	NSS11500-12
Switching Capacity (Tbps)	3.84Tbps	7.68Tbps	7.68Tbps
Control Engine Slots (MPU)	2	2	2
Switching Fabric Slots (SFU)	2	2	2
Line Card Slots (LPU)	4	8	12
Power Module Slots	4	8	8
Fan Array Slots	2	2	4
<hr/>			
Maximum 1000M Base-T	192	384	576
Maximum 1000M Base-X	192	384	576
Maximum 10G SFP+	192	384	384
Maximum 40G QSFP+	48	96	96
<hr/>			
Maximum 1000M PoE+	160	320	480
Maximum 2.5G PoE++	32	64	96



NEW NSS5812 NBASE-T 10G L3 AGGREGATION SWITCH SERIES

Series	Specification	NSS5812-28MXT	NSS5812-30MXT	NSS5812-30MXTP
NSS5812 Series 	Switching Capacity	560Gbps	640Gbps	640Gbps
	Fixed 100M/1G/2.5G/5G/10G	24	24	24
	Fixed 10G SFP+	4	N/A	N/A
	Expansion Slot	N/A	1	1
	802.3 af/at/bt (UPoE)	N/A	N/A	Yes
	FAN Module	Fixed FAN	Modular FAN	Modular FAN
	Power Supply Module	Fixed Single AC	Modular Power	Modular Power
	Expansion Module	N/A	4-Port 10G SFP+ 2-Port 40G QSFP	4-Port 10G SFP+ 2-Port 40G QSFP



NEW NSS3530/NSS3330 CAMPUS L3 1/10G ACCESS SWITCH SERIES

Series	Specification	NSS3530-30TXF	NSS3530-54TXF	NSS3530-30TXP	NSS3530-54TXP	NSS3530-38GTXF	NSS3530-54GXF
2023 Q2	Switching Capacity	168Gbps	216Gbps	168Gbps	216Gbps	136Gbps	216Gbps
	Fixed 1000M Base-T	24	48	24	48	8	N/A
	Fixed 1000M Base-X	N/A	N/A	N/A	N/A	24	48
	Fixed 1/10G SFP+	6	6	6	6	6	6
	PoE&PoE+	N/A	N/A	Yes	Yes	N/A	N/A
	Power Supply	Modular Power Slots	Modular Power Slots	Modular Power Slots	Modular Power Slots	Modular Power Slots	Modular Power Slots

Series	Specification	NSS3330-30TXF	NSS3330-54TXF	NSS3330-30TXP	NSS3330-54TXP	NSS3530-38GTXF	
2023 Q2	Switching Capacity	168Gbps	216Gbps	168Gbps	216Gbps	136Gbps	
	Fixed 1000M Base-T	24	48	24	48	8	
	Fixed 1000M Base-X	N/A	N/A	N/A	N/A	24	
	Fixed 1/10G SFP+	6	6	6	6	6	
	PoE&PoE+	N/A	N/A	Yes	Yes	N/A	
	Power Supply	Fixed Dual AC	Fixed Dual AC	Fixed Single AC	Fixed Single AC	Fixed Dual AC	



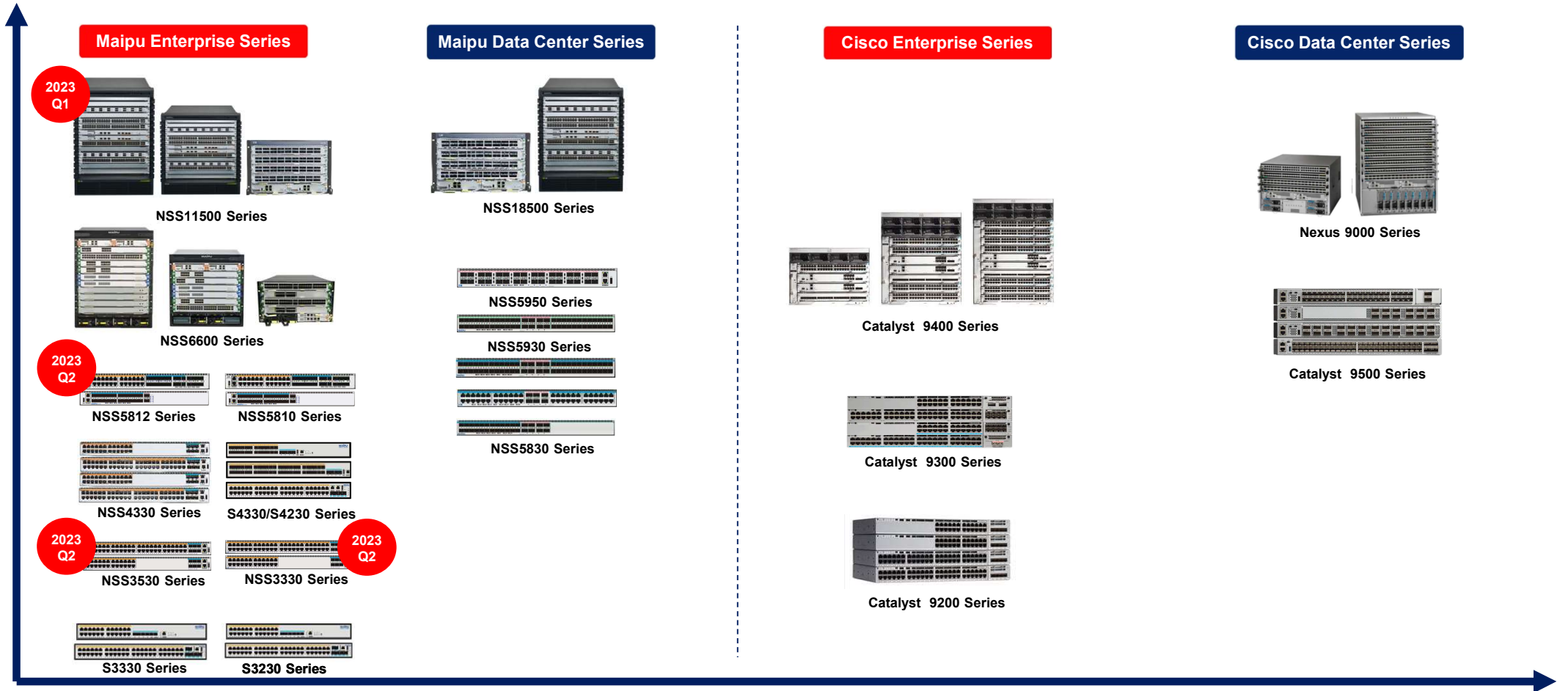
AGENDA

CONTENTS

CHAPTER 1	2022 MAIPU CAMPUS SWITCH PRODUCT LINE
CHAPTER 2	2022 MAIPU DATACENTER SWITCH PRODUCT LINE
CHAPTER 3	2022 MAIPU SWITCH TYPICAL APPLICATION
CHAPTER 4	2023 MAIPU SWITCH PRODUCT LINE ROADMAP
CHAPTER 5	MAIPU SWITCH CORRESPONDENCE MATRIX



MAIPU VS. CISCO



MAIPU VS. ARUBA

Maipu Enterprise Series

2023 Q1



NSS11500 Series



NSS6600 Series

2023 Q2



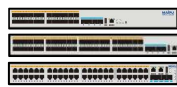
NSS5812 Series



NSS5810 Series



NSS4330 Series

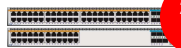


S4330/S4230 Series

2023 Q2



NSS3530 Series



NSS3330 Series



S3330 Series



S3230 Series

2023 Q2

Maipu Data Center Series



NSS18500 Series



NSS5950 Series



NSS5930 Series



NSS5830 Series

Aruba Enterprise Series



CX 6400 Series



CX 6200 Series



CX 6100 Series



3810 Series



2930 Series

Aruba Data Center Series



CX 8400 Series



CX 8360 Series



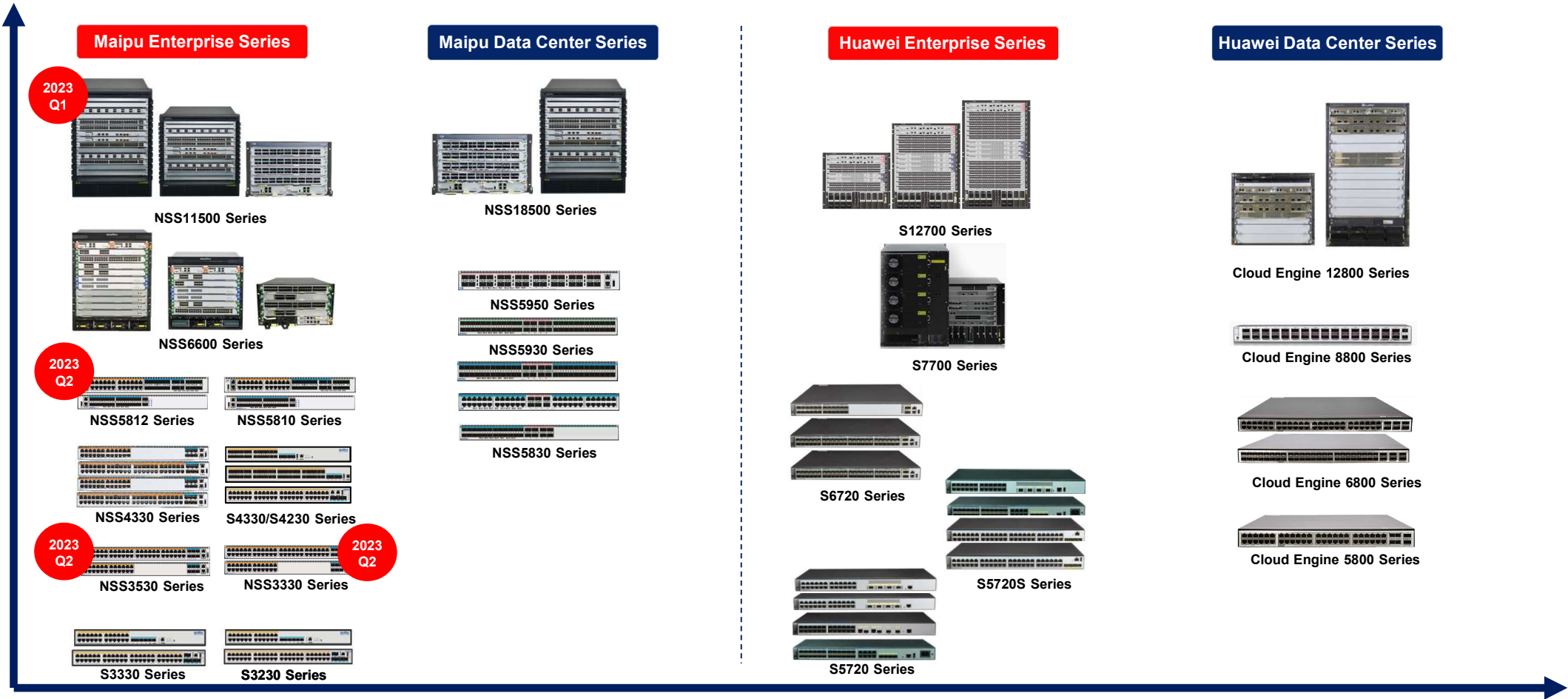
CX 8325 Series



CX 6300 Series



MAIPU VS. HUAWEI



MAIPU
MAKE IT INTELLIGENT

THANKS

MAIPU, MAKE IT INTELLIGENT

迈普大厦

E-mail: overseas@maipu.com | Web: www.maipu.com | Tel: +86-28-65544850



MAIPU, MAKE IT INTELLIGENT