

Maipu Catalog 2020

MAIPU
MAKE IT INTELLIGENT

Maipu Communication Technology Co., Ltd

Maipu Company Profile

About Us

Founded in 1993, Maipu Communication Technology Co., Ltd., has already formed five product lines: Router, Switch, Wireless, GPON and Cloud applications. Nowadays, Maipu products and solutions have been widely used in diversified sectors, including bank, telecom, ISP, government and other enterprise customers. Till now, Maipu products and solutions have been deployed in more than 50 countries, such as India, Pakistan, Switzerland, Poland, Czech, Austria, Mexico, Russia, Singapore, Malaysia, Thailand, Indonesia and Niger.



Maipu Headquarters



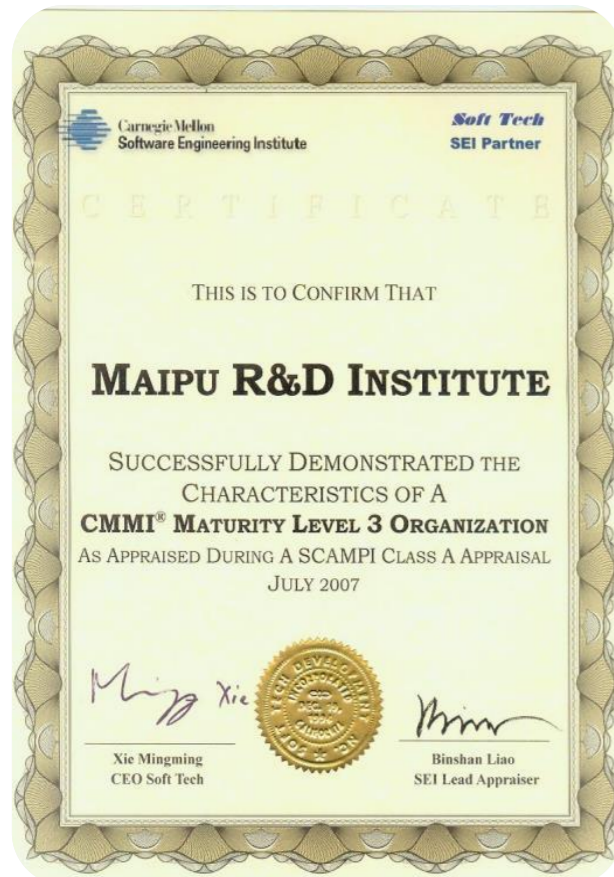
Maipu Manufacturing



Maipu R&D Center

R&D Strength

- CMMI® MATURITY LEVEL 3 ORGANIZATION
- 800 R&D Professionals with 60% masters or above
- Annual research funding accounts for more than 15% of the total sales revenue
- Over 1200 patent applications and 220 registered software products



Manufactory Base



- Built in 2001, with 17,000 square meters, 400 staff
- Annual production capacity of 2,000,000 units
- 4 high-speed Siemens SMT production lines
- ISO14001:2004 GB/T 24001-2004 Certificated
- ISO9001:2000 GB/T 19001-2000 Certificated



Global Market



Maipu product Line Introduction

Maipu Product Family

ENTERPRISE-LEVEL ROUTER PRODUCT LINE

MP7500X Series MSR MPLS Core Router
MP7300X Series MSR MPLS Aggregation Router
MP3900X Series MSR MPLS Aggregation Router
MP2900X Series MSR MPLS Access Router
MP1900X Series MSR MPLS Access Router
MP1800X Series MSR MPLS Edge Router

ENTERPRISE-LEVEL M2M GATEWAY

MP1800X-40 Series LTE M2M GATEWAY

ALL-BY-CHINA ROUTER PRODUCT LINE

NSR7500X Series All-By-China Core Router
NSR7300X Series All-By-China Aggregation Router
NSR2900X Series All-By-China Access Router

ENTERPRISE-LEVEL SWITCH PRODUCT LINE

S8900E Series Stackable MPLS Core Switch
S6600A Series Stackable MPLS Distribution Switch
S5820 Series 100G Stackable L3 Aggregation Switch
S4330 Series 10G Stackable L3 Aggregation Switch
S4230 Series 10G Stackable L3 Aggregation Switch
S3330 Series 10G Stackable L3 Access Switch
S3230 Series 10G Stackable L2+ Access Switch
S2300 Series Gigabit L2 Access Switch

ALL-BY-CHINA SWITCH PRODUCT LINE

NSS8900 Series All-By-China Core Switch
NSS5820 Series All-By-China Aggregation Switch
NSS4320 Series All-By-China Access Switch

PACKET BROKER PRODUCT LINE

T12800 Series 100G Core Packet Broker
T6500 Series 100G Aggregation Packet Broker
T5500 Series 40G Aggregation Packet Broker
T4320 Series 10G Access Packet Broker

WI-FI PRODUCT LINE

WA2600 Series Access Point
WNC6600 Series Wireless Access Controller

UNIFIED COMMUNICATION PRODUCT LINE

VG6500 / VG6000 / VG2000 Series VoIP Gateway
VEP600 / VEP300 Series IP Phone

GPON PRODUCT LINE

PT4300 Series GPON OLT
PU3200 Series GPON ONU

MANAGEMENT & AUTHENTICATION

NetManager Management System
E4G M2M Management System
VC8100 Series Unified Communication Platform
AAS Wireless Authentication Platform

Enterprise-level Router Series

Core



MP7500X-10



MP7500X-04



MP7300X-08

Aggregation



MP3900X-08



MP3900X-06

Access



MP2900X-04/14/24



MP1900X-12/22



MP1800X-51



MP1800X-50

3G/4G LTE Gateway Series

LTE



MP1800X-40 MP1800X-40E MP1800X-40W

All-by-China Router Series

All-by-China



NSR7500X-10



NSR7300X-08



NSR2900X-04

Enterprise-level Router Product Line

Enterprise-Level Router Series

Model	MP7500X-04 MP7500X-10	MP7300X-08	MP3900X-06 MP3900X-08	MP2900X-04/04D MP2900X-14/14D/14P MP2900X-24/24D	MP1900X-12 MP1900X-22	MP1800X-50 MP1800X-51
Specification	Chassis	Chassis	Desktop/Chassis	Desktop	Desktop	Desktop
Control Engine	2	2	N/A	N/A	N/A	N/A
Service Engine	2/4	1	0/1	N/A	N/A	N/A
Service Slots	4/10	8	6/8	4	2	N/A
Fixed WAN	N/A	8GE	8GE Combo/ 1GEF+2GE Combo/ 8GEF+16GET/ 8GEF+16GET+2*10GE	4GE Combo/ 2GE Combo+2GET	1GEF/ 1GEF+4GET	1GET/ 1GE Combo
Fixed LAN	N/A	N/A	N/A	0GET/ 24GET(8 Port PoE)/ 48GET	8GET	4GET
Power Supply	Modular Power	Modular Power	Modular Power	AC/Dual AC	AC	AC
Temperature	0°C~40°C	0°C~40°C	0°C~45°C	0°C~45°C	0°C~45°C	0°C~45°C
OC48 Module	Yes	Yes	N/A	N/A	N/A	N/A
OC12 Module	Yes	Yes	Yes	N/A	N/A	N/A
OC3 Module	Yes	Yes	Yes	Yes	Yes	N/A
10G SFP+ Module	Yes	Yes	N/A	N/A	N/A	N/A
1G Module	Yes	Yes	Yes	Yes	Yes	N/A
E1/CE1 Module	Yes	Yes	Yes	Yes	Yes	N/A
Serial Module	N/A	N/A	Yes	Yes	Yes	N/A
3G/4G Module	N/A	N/A	Yes	Yes	Yes	N/A

All-by-China Router Product Line

All-by-China Router Series

Model	NSR7500X-10	NSR7300X-08	NSR2900X-04
Specification	Chassis	Chassis	Desktop
Control Engine	2	2	N/A
Service Engine	4	1	N/A
Service Slots	10	8	4
Fixed WAN	N/A	8GE	4GE Combo
Fixed LAN	N/A	N/A	N/A
Power Supply	Modular Power	Modular Power	AC
Temperature	0°C~40°C	0°C~40°C	0°C~45°C
OC48 Module	Yes	Yes	N/A
OC12 Module	Yes	Yes	N/A
OC3 Module	Yes	Yes	Yes
10G SFP+ Module	Yes	Yes	N/A
1G Module	Yes	Yes	Yes
E1/CE1 Module	Yes	Yes	Yes
Serial Module	N/A	N/A	Yes
3G/4G Module	N/A	N/A	Yes

M2M LTE Gateway Product Line

3G/4G LTE M2M Gateway Series

Model	MP1800X-40	MP1800X-40W	MP1800X-40E
Specification	Desktop	Desktop	Desktop
1000M Base-T WAN/LAN	5	5	5
USB	1	1	1
Console	1	1	1
SIM Card Slot	1	1	2
LTE Modem	1	1	2
3G WCDMA(Compatible)	Yes	Yes	Yes
4G FDD/TDD-LTE	Yes	Yes	Yes
Wi-Fi (802.11n)	N/A	Yes	N/A
Power Supply	AC Adaptor	AC Adaptor	AC Adaptor
Working Temperature	-20°C~65°C	-20°C~65°C	-20°C~65°C

Enterprise-level Switch Series

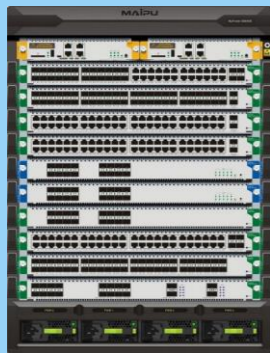
Core



S8900E-12



S8900E-08



S8900E-10



S8900E-06

Aggregation



S6600A-06



S6600A-10



S5820 Series



S4330 Series



S4230 Series

Access



S3330 Series



S3230 Series



S2300 Series

All-by-China Switch Series



NSS8900E Series



NSS5820 Series

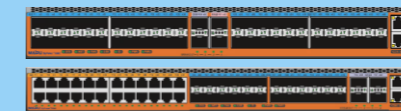


NSS4320 Series

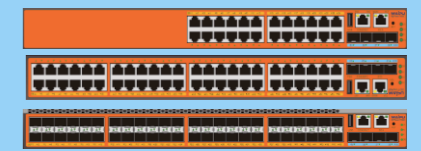
Packet Broker Switch Series



T12800 Series



T5820 Series



T4320 Series

Enterprise-Level Switch Product Line

Enterprise-Level Switch Series

Model	S8900E-06/10 S8900E-08/12	S6600A-06 S6600A-10	S5820-30XQFP S5820-54XQFP	S4330-30TXF S4330-30TXP S4330-54TXF S4330-54TXP S4330-54GXF	S4230-30TXF S4230-54TXF S4230-36GTXF	S3330-28TXF S3330-28TXP S3330-28GXF	S3230-28TXF S3230-28TXP	S2300-10TX S2300-10TP S2300-28TC S2300-28TP
Specification	Chassis	Chassis	Desktop	Desktop	Desktop	Desktop	Desktop	Desktop
Control Engine	2	2	N/A	N/A	N/A	N/A	N/A	N/A
Switching Fabric	2(06/10) 4(08/12)	2	N/A	N/A	N/A	N/A	N/A	N/A
Expansion Slots	6/10 8/12	6/10	N/A	1	1(30TXF/54TXF)	N/A	N/A	N/A
Power Module	4/8	4	2	2	2(Fixed)	2(Fixed)	1(Fixed)	1(Fixed)
Power Supply	AC/DC	AC/DC	AC	AC/DC	AC/DC	AC/DC	AC	AC
Max. 1G Base-T	192/384 384/576	192/384	N/A	24(30TXF/TXP) 48(54TXP/TXP)	24(30TXF) 48(54TXF) 8(36GTXF)	24(28TXF/28TXP)	24	8(10TX/TP) 24(28TC/TP)
Max. 1G SFP	192/384 384/576	192/384	N/A	48(54GXF)	24(36GTXF)	24(28GXF)	N/A	2(10TX/TP) 4(28TC/TP)
Max. 10G SFP+	208/416 416/624	208/416	24(30XQSP) 48(54XQSP)	6	6(30TXF/54TXF) 4(36GTXF)	4	4	N/A
Max. 40G QSFP	64/128 128/192	64/128	2	N/A	N/A	N/A	N/A	N/A
Max. 100G QSFP28	N/A	N/A	4	N/A	N/A	N/A	N/A	N/A

Enterprise-Level Switch Product Line

Enterprise-Level Switch Series

Model	S8900E-06/10 S8900E-08/12	S6600A-06 S6600A-10	S5820-30XQFP S5820-54XQFP	S4330-30TXF S4330-30TXP S4330-54TXF S4330-54TXP S4330-54GXF	S4230-30TXF S4230-54TXF S4230-36GTXF	S3330-28TXF S3330-28TXP S3330-28GXF	S3230-28TXF S3230-28TXP	S2300-10TX S2300-10TP S2300-28TC S2300-28TP
Stackable	Chassis	Chassis	Desktop	Desktop	Desktop	Desktop	Desktop	Desktop
MAC Address	64K/128K	32K/64K	128K	32K	32K	16K	16K	8K
MPLS VPN	Yes	Yes	Yes	N/A	N/A	N/A	N/A	N/A
Routing Protocol	BGP/OSPF/ RIP/Static	BGP/OSPF/ RIP/Static	BGP/OSPF/ RIP/Static	BGP/OSPF/ RIP/Static	BGP/OSPF/ RIP/Static	OSPF/RIP/Static	Static	N/A
50ms Ring	G.8032	G.8032	G.8032	G.8032	G.8032	G.8032	G.8032	N/A
Stackable	Yes	Yes	Yes	Yes	Yes	Yes	Yes	N/A
PoE& PoE+	Yes	Yes	N/A	Yes	N/A	Yes	Yes	Yes

All-By-China Switch Product Line

All-By-China Switch Series






Model	NSS8900-08	S5820-30XQFP S5820-54XQFP	NSS4320-54TXF NSS4320-56TXQFP
Specification	Chassis	Desktop	Desktop
Control Engine	2	N/A	N/A
Switching Fabric	4	N/A	N/A
Expansion Slots	8	N/A	N/A
Power Module	4	2	2
Power Supply	AC	AC	AC
Max. 1G Base-T	384	N/A	48
Max. 1G SFP	384	N/A	N/A
Max. 10G SFP+	384	24(30XQFP) 48(54XQFP)	6
Max. 40G QSFP	96	2	2
Max. 100G QSFP28	N/A	4	N/A
MAC Address	64K/128K	128K	32K
MPLS VPN	Yes	Yes	Yes
Routing Protocol	BGP/OSPF/ RIP/Static	BGP/OSPF/ RIP/Static	BGP/OSPF/ RIP/Static
Stackable	Yes	Yes	Yes

Packet Broker Switch Product Line

Packet Broker Switch Series

Model	T12800-03	T6500-48XF2QP	T5500-24GT4Q	T4320-28TF	T4320-52TF	T4320-52F
Specification	Chassis	Desktop	Desktop	Desktop	Desktop	Desktop
Control Engine	2	N/A	N/A	N/A	N/A	N/A
Fixed 1G Base-T	144	N/A	24	24	48	N/A
Fixed 1G Base-X	144	N/A	N/A	N/A	N/A	48
Max. 10G SFP+	144	48	24	4	4	4
Max. 40G QSFP	48	2	4	N/A	N/A	N/A
Max. 100G QSFP	N/A	2	N/A	N/A	N/A	N/A
Power Supply	AC	AC	AC	AC	AC	AC
Working Temp.	0°C~45°C	0°C~45°C	0°C~45°C	0°C~45°C	0°C~45°C	0°C~45°C

Enterprise Wi-Fi Series

Indoor AP	Ceiling Mount	 <p>WA2600-621-PE WA2600-620-PE WA2600-521-PE WA2600-321-PTE WA2600-323-PTE</p>						
Outdoor AP	Pole Mount	 <p>WA2600-521N-PTE WA2600-521W-PTE WA2600-626-PTE</p>			Indoor AP	In-Wall	 <p>WA2600-215-PE WA2600-615-PE</p>	
Access Controller		 <p>WNC6600-100-AC WNC6600-200-AC WNC6600-500-AC WNC6600-1000-AC WNC6600-2000-AC</p>						
Internet Security Gateway		 <p>ISG1000-G1 ISG1000-G2 ISG1000-G6 ISG1000-X1</p>						

Enterprise-Level Wi-Fi AP Series

Access Point	WA2600-621-PE	WA2600-620-PE	WA2600-521-PE	WA2600-321-PTE WA2600-323-PTE
Installation	Ceiling-Mount	Ceiling-Mount	Ceiling-Mount	Ceiling/Wall-Mount
Environment	Indoor	Indoor	Indoor	Indoor
Interface	1*Giga RJ45(PoE in) 1*Giga RJ45 1*Console 1*USB	1*Giga RJ45(PoE in) 1*Console 1*USB	1*Giga RJ45(PoE in) 1*Giga RJ45 1*Console 1*USB	1*Giga RJ45(PoE in) 1*Console
MIMO	2*2	2*2	2*2	2*2
IEEE 802.11	802.11a/b/g/n/ac wave2	802.11a/b/g/n/ac wave2	802.11a/b/g/n/ac	802.11a/b/g/n
Max Speed	400Mbps+867Mbps	300Mbps+867Mbps	300Mbps+867Mbps	300Mbps+300Mbps
PoE	IEEE 802.3af/at	IEEE 802.3af/at	IEEE 802.3af/at	IEEE 802.3af/at
Work Mode	Fit/Fat	Fit/Fat	Fit/Fat	Fit/Fat
Security	WEP, dynamic WEP, TKIP, CCMP	WEP, dynamic WEP, TKIP, CCMP	WEP, dynamic WEP, TKIP, CCMP	WEP, dynamic WEP, TKIP, CCMP
Antenna	In-built	In-built	In-built	WA2600-321-PTE: In-built WA2600-323-PTE: External
Power Consumption	<13W	<13W	<13W	<13W

Enterprise-Level Wi-Fi AP Series

Access Point	WA2600-615-PE	WA2600-215-PE	WA2600-626-PTE	WA2600-521N-PTE WA2600-521W-PTE
Installation	In-wall Mount	In-wall Mount	Pole-Mount	Pole-Mount
Environment	Indoor	Indoor	Outdoor(IP67)	Outdoor(IP67)
Interface	1*Giga RJ45(PoE in) 4*Giga RJ45	1*100Mbps RJ45(PoE in) 2*100Mbps RJ45 1*RJ11 Bypass	1*Giga RJ45(PoE in) 1*Giga SFP 1*Console	1*Giga RJ45(PoE in) 1*Giga RJ45 1*Giga SFP 1*Console
MIMO	2*2	2*2	2*2	2*2
IEEE 802.11	802.11b/g/n/ac wave2	802.11b/g/n	802.11a/b/g/n/ac wave2	802.11a/b/g/n/ac
Max Speed	300Mbps+867Mbps	300Mbps	400Mbps+867Mbps	300Mbps+867Mbps
PoE	IEEE 802.3af/at	IEEE 802.3af/at	IEEE 802.3af/at	IEEE 802.3af/at
Work Mode	Fit/Fat	Fit/Fat	Fit/Fat	Fit/Fat
Security	WEP, dynamic WEP, TKIP, CCMP	WEP, dynamic WEP, TKIP, CCMP	WEP, dynamic WEP, TKIP, CCMP	WEP, dynamic WEP, TKIP, CCMP
Antenna	In-built	In-built	External	WA2600-521N: In-built WA2600-521W: External
Power Consumption	<6W	<6W	<25W	<25W

Enterprise-Level Wi-Fi AC Series

Access Controller	WNC6600 Series				
Model	WNC6600-100-AC	WNC6600-200-AC	WNC6600-500-AC	WNC6600-1000-AC	WNC6600-2000-AC
Interface	24* 100Mbps RJ45 2* Combo Giga ports 1*Console+1 Mgmt Port	8* Combo Giga ports 2* Giga SFP ports 1*Console+1 Mgmt Port	12* Giga RJ45 12* Combo Giga ports 2*10G SFP+ ports 1*Console+1 Mgmt Port	12* Giga RJ45 12* Combo Giga ports 2*10G SFP+ ports 1*Console+1 Mgmt Port	12* Giga RJ45 12* Combo Giga ports 2*10G SFP+ ports 1*Console+1 Mgmt Port
Max. Manageable AP	128	256	512	1024	2048
AP Configuration Template	Yes	Yes	Yes	Yes	Yes
AP Auto-Discovery	Yes	Yes	Yes	Yes	Yes
CAPWAP	Yes	Yes	Yes	Yes	Yes
HA	1+1, 1:1	1+1, 1:1	1+1, 1:1	1+1, 1:1	1+1, 1:1
License Management	Yes	Yes	Yes	Yes	Yes

Unified Communication Series

VoIP Gateway



VG6500 Series



VG6000 Series



VG2000 Series

IP Phone



VEP600 Series



VEP300 Series



VEP310/320 Series

Application Platform



VC8100 Series Unified Communication Platform



MCC Call Center Platform



ICR Call Recording Platform



MTC Call Conference Platform


Core VoIP Gateway

Model	MyPower VG M6500	MyPower VG M6000
10/100M Ethernet interface	2	2
Console	1	1
Number of slots	16	4
Simulation interface	FXS, FXO	
FXS/FXO binding	Support	Support
Digital trunk interface (exclusion of trunk card)	0/2/4 E1	0/2/4 E1
Ethernet interface	IEEE 802.2 (LLC), IEEE 802.3 (Ethernet)	
E1 interface	ITU-T G.703 (1999)	
Signaling trunk protocol	CAS: Analog CO Trunk, CCS: ISDN PRI (AT&T Custom, NI-1 and NI-2)	
VoIP key protocols	SIP, T38, RFC2833	
Voice coding	G.711, G.723, G.729	
Compressed voice transmission	RTP/RTCP	
Management mode	SNMP, Web, shell	
Echo suppression	G.168–2000 compliant	
Voice activation/Comfort noise	VAD/CNG	
Signaling detection and generation	DTMF	
H x W x D (mm)	400 x 440 x 344	125.6 x 482.6 x 312.5
AC input voltage	100 – 240V	100 – 240V
DC input voltage	--	-40 to -57V
Frequency (Hz)	50 – 60Hz	50 – 60Hz
Maximum power consumption (W)	800W	300W

Access VoIP Gateway

Model	MyPower VG2000-8/16/32S/48S/64S (V4)	MyPower VG2000-32 (V4)
10/100M Ethernet interface	2	2
Console	1	1
Slots	/	5
Module interface	/	4FXS+4FXO Module
		8FXS Module
		Voice E1 Module
Max. Voice interface	8 FXS (VG2000-8)	32 FXS
	16 FXS (VG2000-16)	28FXS+4FXO
	32 FXS (VG2000-32S)	16FXS+16FXO
	48 FXS (VG2000-48S)	
	64 FXS (VG2000-64S)	
Max. Voice E1	/	1
Ethernet interface	IEEE 802.2 (LLC), IEEE 802.3 (Ethernet)	
VoIP key protocols	SIP, T38, RFC2833	
Voice coding	G.711, G.723, G.729	
Compressed voice transmission	RTP/RTCP	
Management mode	SNMP, Shell	
Echo suppression	G.168–2000 compliant	
Voice activation/Comfort noise	VAD/CNG	
Signaling detection and generation	DTMF	
H x W x D (mm)	44.5×440×200	
AC input voltage	90 – 265V	
Frequency (Hz)	50 – 60Hz	
Maximum power consumption (W)	<50W	

GPON ONU Series

GPON ONU	HGU	SFU		GPON OLT  PT4300 Series
	 PU3200-4GW	 PU3200-4T	 PU3200-1G	

GPON ONU	PU3200-4TW	PU3200-4T	PU3200-1T
Working Mode	HGU (Bridge & Route)	SFU (Bridge)	SFU (Bridge)
100/1000M Base-T interfaces	4*100M/1000M	1*100M/1000M+3*100M	1*100M/1000M
Wi-Fi	Yes	N/A	N/A
Optical Parameter	Network coverage radius: 10-20km Optical receiver: ≥-26dBm	Network coverage radius: 10-20km Optical receiver: ≥-26dBm	Network coverage radius: 10-20km Optical receiver: ≥-26dBm
Max. Speed	Downstream: 2.5Gbps Upstream: 1.25Gbps	Downstream: 2.5Gbps Upstream: 1.25Gbps	Downstream: 2.5Gbps Upstream: 1.25Gbps
VLAN	Yes	Yes	Yes
QoS	802.1p/IP-TOS Priority Port Rate Limitation	802.1p/IP-TOS Priority Port Rate Limitation	802.1p/IP-TOS Priority Port Rate Limitation
GPON Standard	ITU-T G.984 GPON; GEM Encryption; DBA (Dynamic Bandwidth Assignment); FEC		
OAM	ITU-T G.988 OMCI; TR069	ITU-T G.988 OMCI; TR069	ITU-T G.988 OMCI; TR069
Power Supply	12V/1.5A	12V/1A	12V/0.5A

GPON OLT Series

GPON OLT	PT4300-08	PT4300-16
GPON Interfaces	8	16
100/1000M RJ45 Interfaces	4	4
100/1000M Combo Interfaces	N/A	4
Max. 10G SFP+	4	3
Recommended Splitting Ratio	1:64~1:128	1:64~1:128
GPON Standard	ITU-T G.984 GPON; GEM Encryption; DBA (Dynamic Bandwidth Assignment); OMCI Management; ONU register management; FEC (Forward Error Correction); Bandwidth allocation mechanism; Static Bandwidth Allocation; Dynamic Bandwidth Allocation	
L2 Features	STP/RSTP/MSTP; VLAN; QinQ; GVRP; LACP; IGMP snooping; DHCP Option82	
Security	ACL, Anti-ARP spoofing, IP source guard; port isolation; mac address binding and filtering; SSH; CPU Guard	
QoS	CAR; Traffic Shaping; 802.1P; DSCP; SP; WRR; WRED	
Management	CLI; Telnet; SSH; SNMP; MIB; NTP	
Modular Power Supply	1+1 AC/DC	1+1 AC/DC

Management Platform

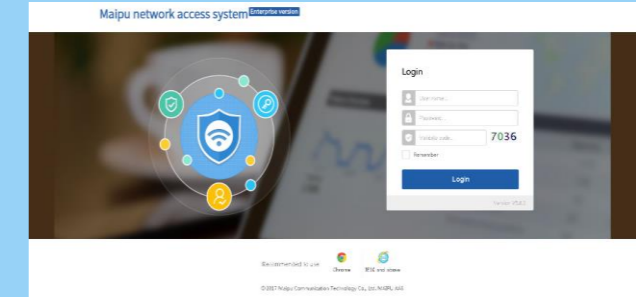
Platform



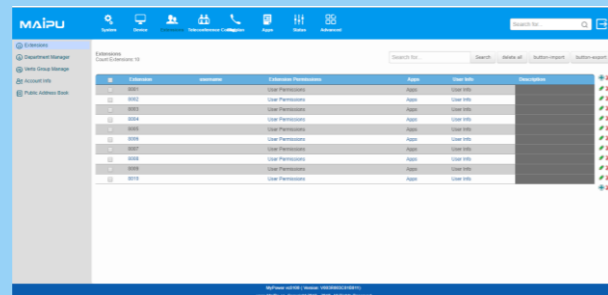
Netmanager
Management System



E4G M2M
Management System



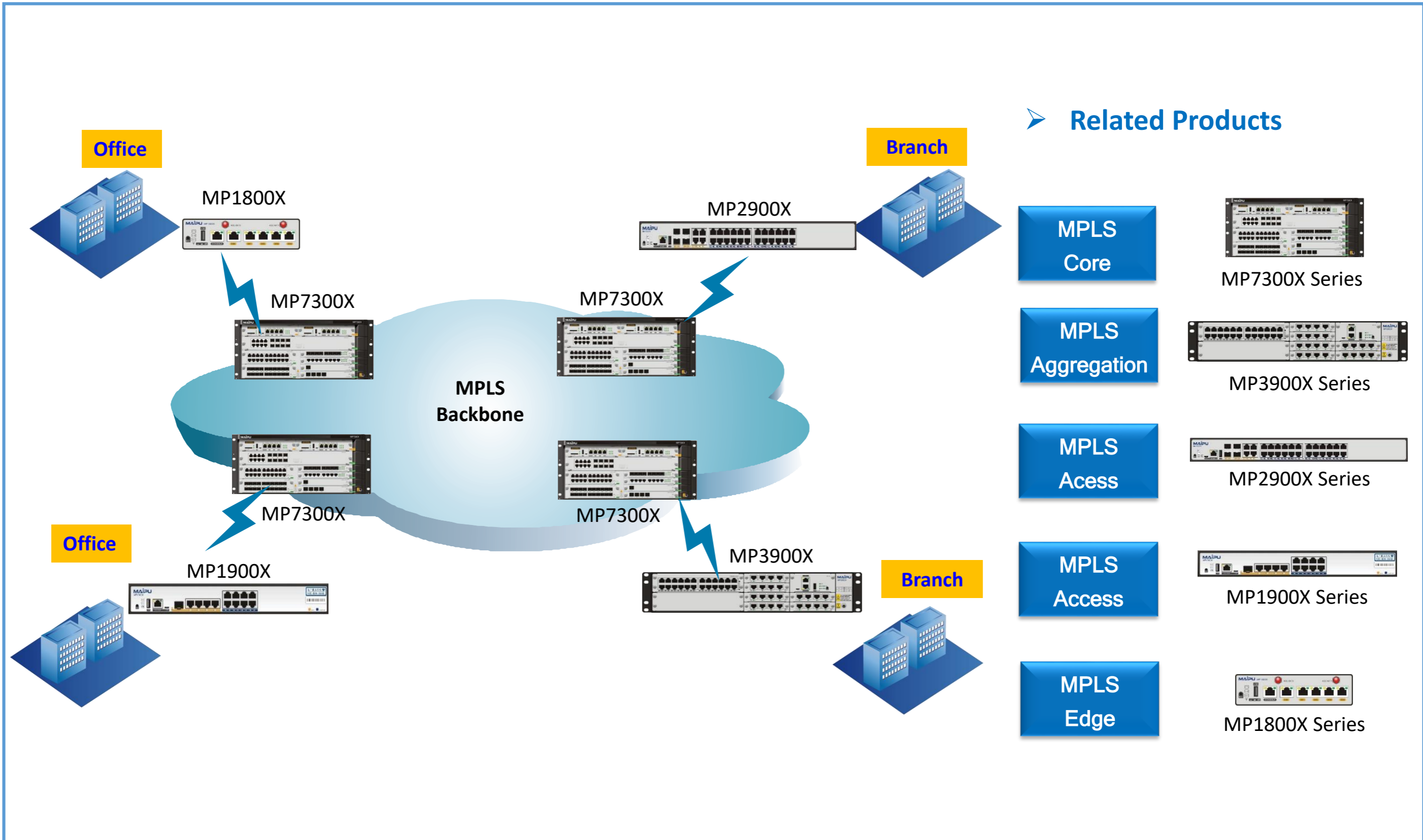
WLAN Wireless
Advertisement Platform



Unified Communication
System

Typical Solution

Enterprise MPLS VPN Solution



4G LTE M2M VPN Solution

E4G Management

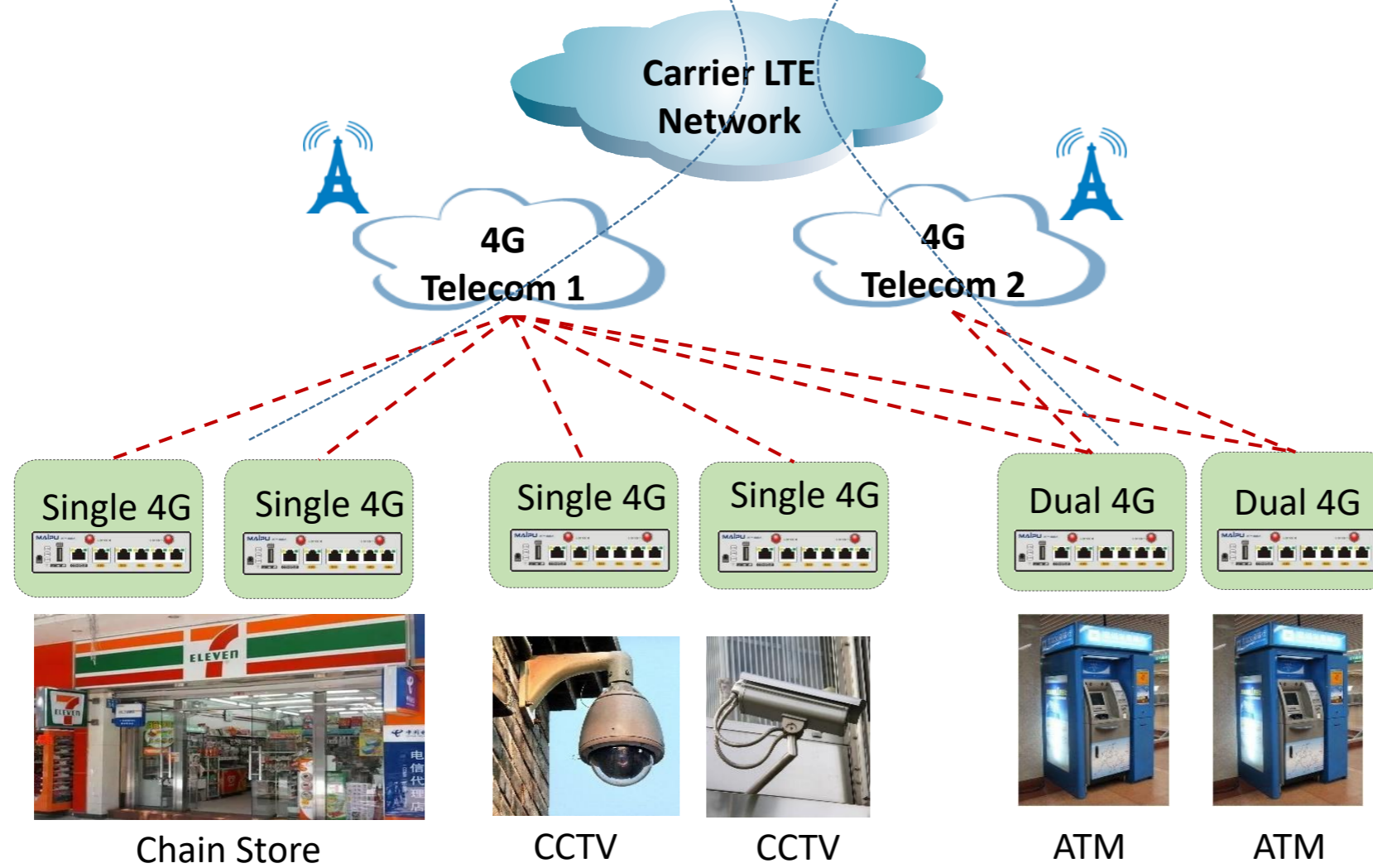


VPN Concentrator



IPSec Tunnel

IPSec Tunnel



➤ Related Products



E4G



MP7300X Series
(1000 Sites)

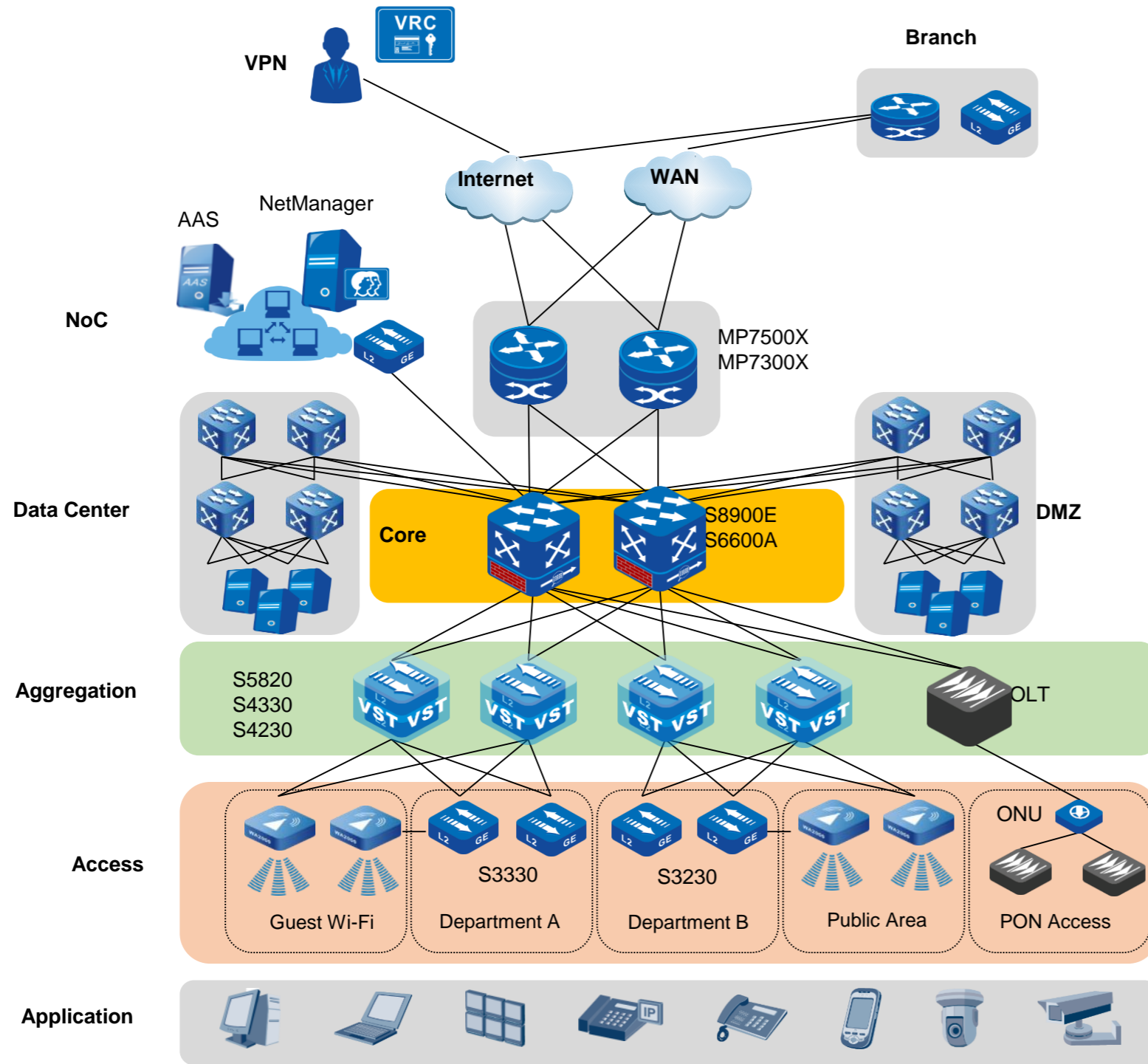


MP3900X Series
(500 Sites)



MP1800X Series

Campus Network Solution



➤ Related Products

Core Switch



S8900E Series

Aggregation Switch



S5820/S4330 Series

Access Switch



S3330/S3230 Series

Access Point



In-Wall AP Ceiling AP Outdoor AP

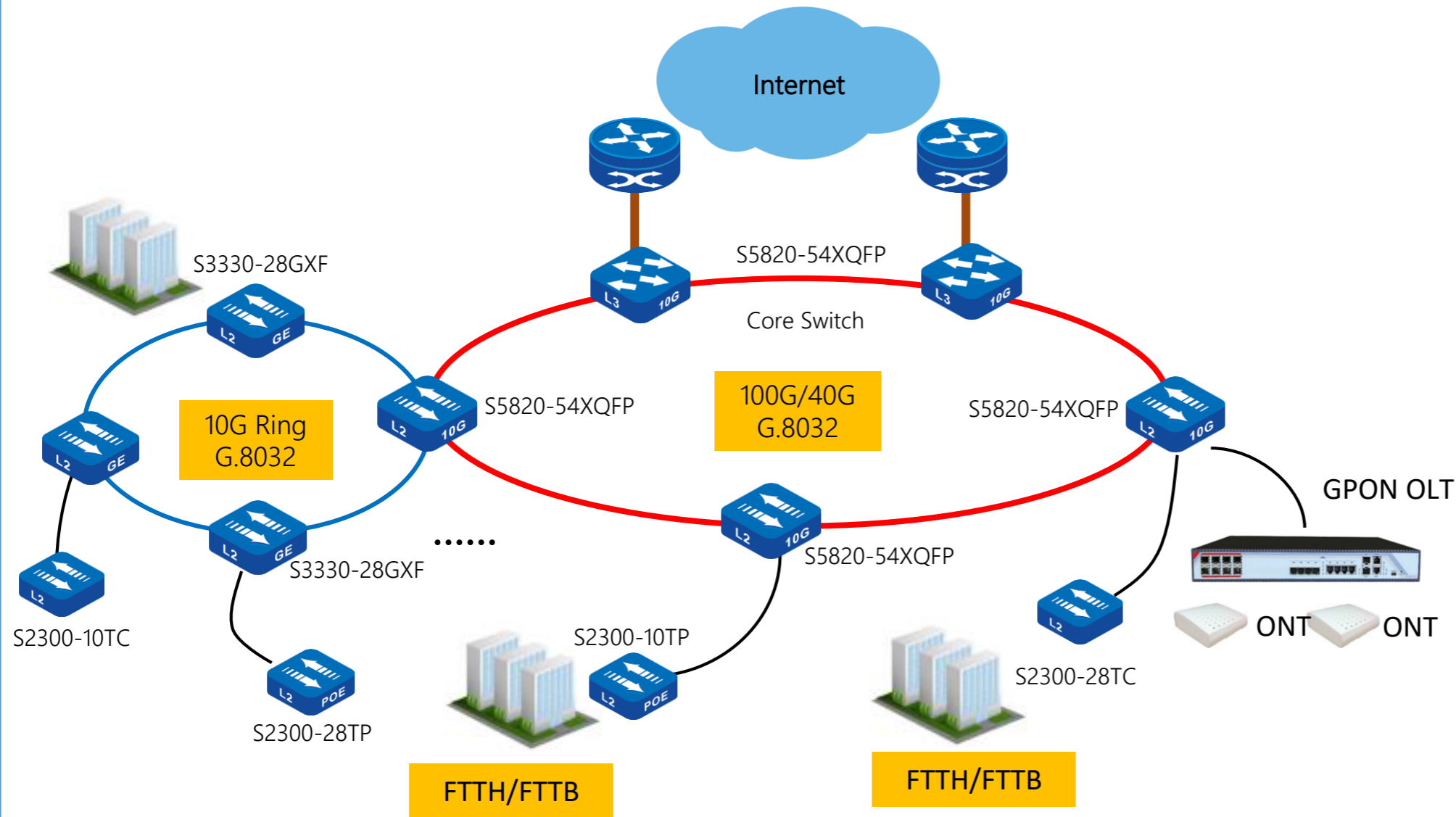
AAA Platform



AAS Platform

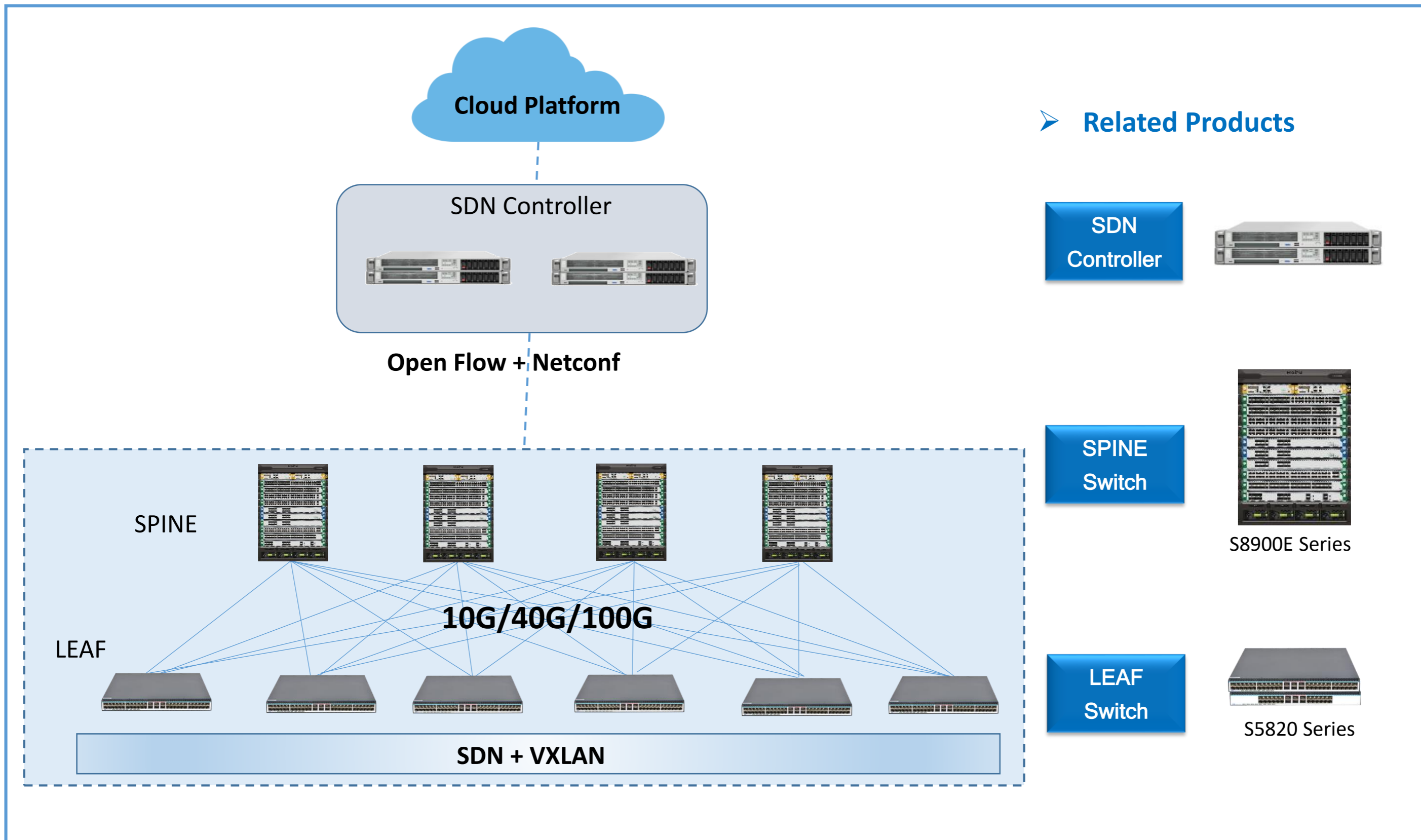
ISP FTTH/ETTH Access Solution

➤ Related Products

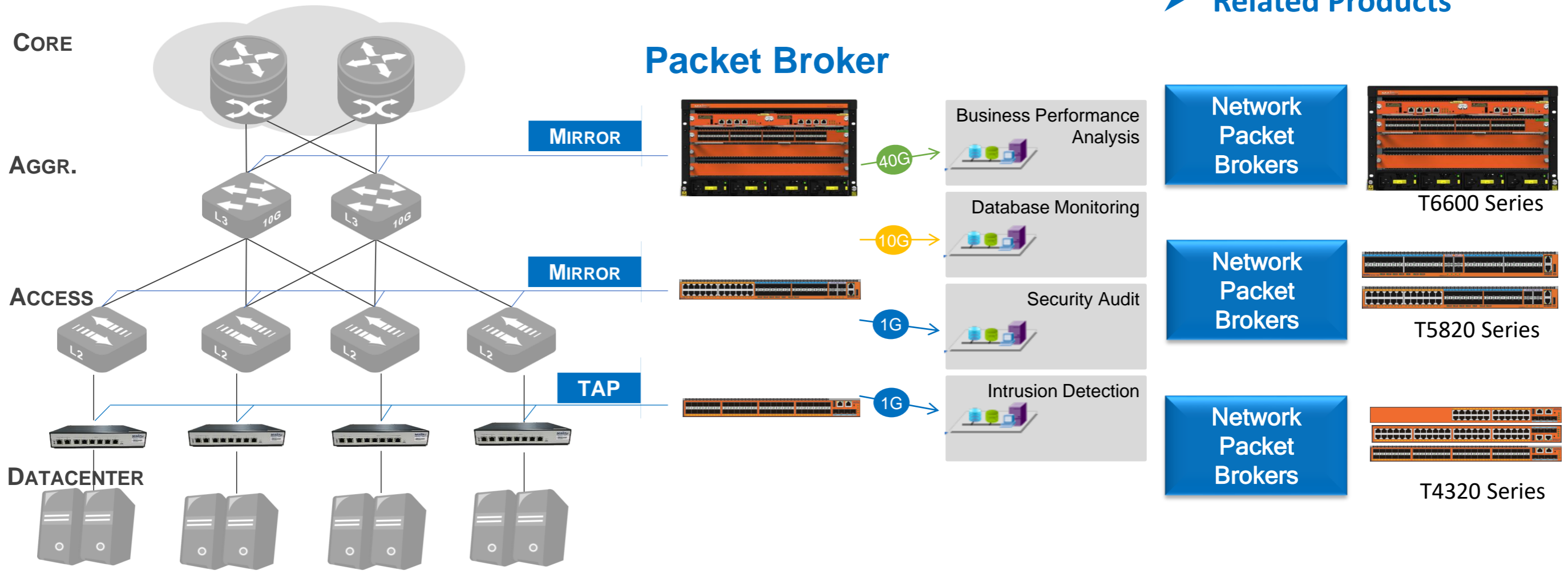


- 40/100G Ring Switch**
S5820 Series
- 10G Ring Switch**
S3330 Series
- GE Access Switch**
S2300 Series
- GPON OLT**
PT4300 Series
- GPON ONU**
PU3200 Series

Enterprise Data Center VXLAN+EVPN Solution



Packet Broker Solution





Maipu Communication Technology Co., Ltd

Maipu Mansion, No. 288 Tianfu 3rd Street, High-tech Zone,
Chengdu, Sichuan, P.R.China, 610094

Direct: +86-28-65544850 | Fax: +86-28-82148948

Web: ww.maipu.com | E-mail: amy@maipu.com